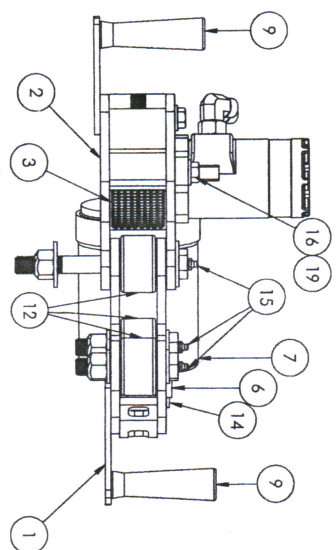
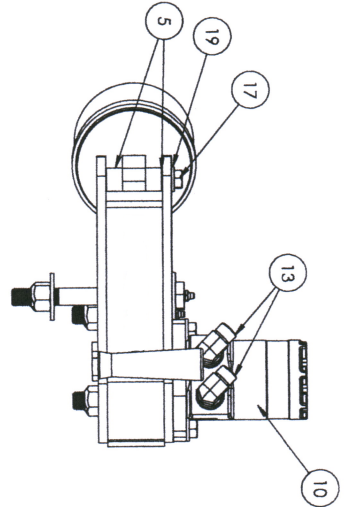
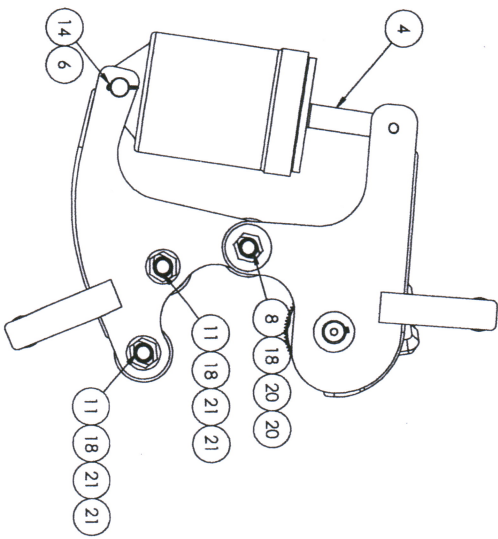
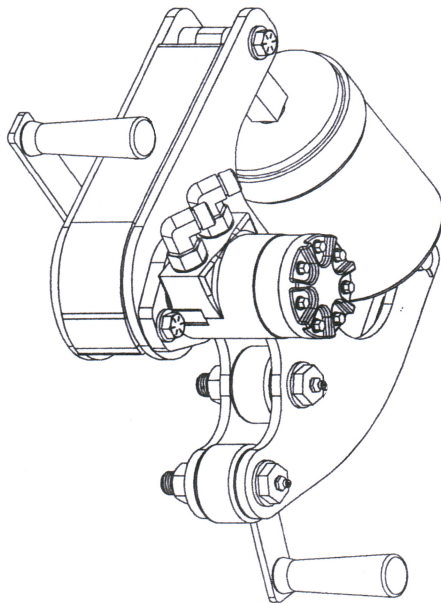


INCHES UNLESS OTHERWISE SPECIFIED

ITEM NO.	QTY.	PC	PART NUMBER	MATERIAL	DESCRIPTION	UM	QTY PER	Weight
1	1	12	NKOT10002C1	Weldment	MOUNT RH. PIPE SPINNER	EA	1	11.3956
2	1	12	NKOT10003C1	Weldment	MOUNT LH. PIPE SPINNER	EA	1	13.3340
3	1	12	NKOT10004-1	ROUND 4-1/2" C-1020 HR	KOT SPINNER, KNULED	LF	0.208	7.82
4	1	15	NKOT1000581	Assembly	CLEVIS, CYLINDER-PIPE SPINNER	EA	1	0.2565
5	2	12	NKOT10006A1	XO13805042	TUBE, 1.00 X 0.50 SAE-1020	LF	0.06	0.02
6	1	12	NKOT10007A1	XO13204761	PIN, CYLINDER-PIPE SPINNER	LF	0.24	0.05
7	1	12	NKOT10008-1	Purchased	AIR CYLINDER, 3-1/4" STROKE	EA	1	15
8	1	12	NKOT10009A1	Purchased	BOLT, 3/4 NC HEX GR8 X 7	EA	1	0.91
9	2	12	NKOT10010-1	Purchased	GRIP HANDLE, SPINNER	EA	1	36.730
10	1	12	NKOT10011-1	Purchased	MOTOR, HYDR 6.0	EA	1	15.87
11	2	12	NKOT10012A1	Purchased	BOLT, 3/4 NC HEX GR8 X 4	EA	1	0.56
12	3	12	XBC-YCR8-40	Purchased	BEARING, CAM ROLLER	EA	1	1.93
13	2	12	109276-0810	Purchased	8-10-C50LO, STR THRD ELBOW 90	EA	1	0.48
14	2	12	4CP-16	Purchased	PIN, 1/8 X 1 COTTER	EA	1	0.01
15	3	12	XAC-1634	Purchased	FITTING, GREASE-1/8" NPT STR	EA	1	0.016
16	2	12	8C8-88	Purchased	BOLT, 1/2 NC HEX GR8 X 1	EA	1	0.09
17	1	12	8C26-88	Purchased	BOLT, 1/2 NC HEX GR8 X 3-1/4	EA	1	0.23
18	3	12	12TLN-C	Purchased	NUT, 3/4" TOP LOCK	EA	1	0.16442
19	3	12	8-W-SAE	Purchased	WASHER, 1/2" PLAIN SAE	EA	1	0.02
20	2	12	12-W	Purchased	WASHER, 3/4" PLAIN	EA	1	0.11
21	4	12	12-W-SAE	Purchased	WASHER, 3/4" PLAIN SAE	EA	1	0.05
22	1	12	4C6-CP	Purchased	SET-SCREW, 1/4-20 CUP PTX 3/4"	EA	1	



NKOT100017-1 AS SAE WDM

