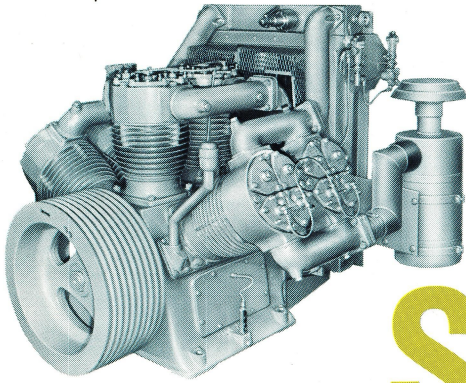
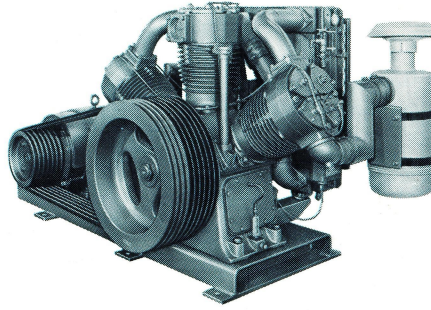


INDUSTRIAL

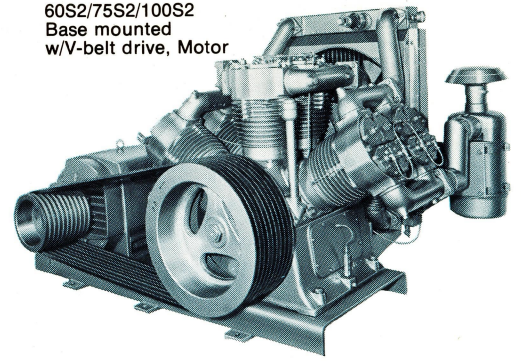
256S2C Basic Compressor
w/Flywheel, Filters,
Double pilot valves



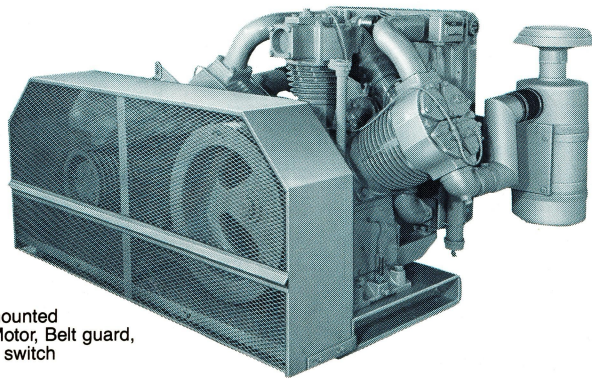
40S2/50S2
Base mounted w/V-belt drive, Motor



60S2/75S2/100S2
Base mounted
w/V-belt drive, Motor



S2 SERIES Stationary Air Compressors



253S2C Base mounted
w/V-belt drive, Motor, Belt guard,
Low oil pressure switch

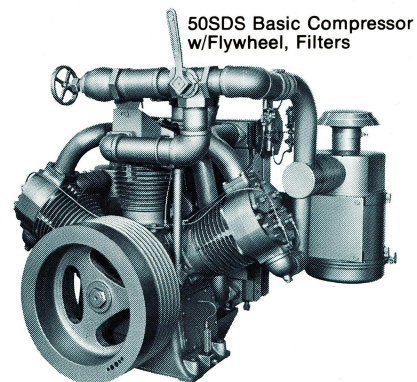
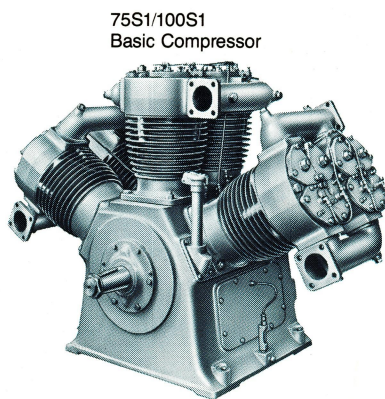
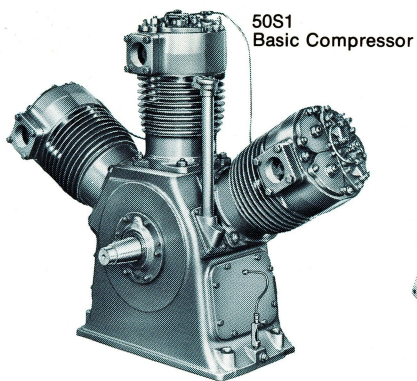
These two stage, air-cooled machines are designed for 24 hour per day use with intermittent or continuous demand. They're well known in industry for their dependable delivery of plant air at low cost. LeROI® stationary compressors are also known for their simplicity of service and ease of maintenance. For example; to inspect or service the valves, just take out the bolts to remove the cover.

BASIC COMPRESSOR	Electric Motor Driven	Model Number	40S2	50S2	253S2C ④	60S2	75S2	100S2	256S2C ④
	Rated Motor, Pressure, Displacement, Rated Speed, Capacity ①	HP PSIG, BAR CFM, M ³ /min. RPM CFM, M ³ /min.		40 125, 8.62 217, 6.14 725 175, 4.96	50 125, 8.62 261, 7.39 870 210, 5.95	60 250, 17.24 260, 7.36 870 210, 5.95	60 125, 8.62 325, 9.20 685 265, 7.50	75 125, 8.62 414, 11.72 870 344, 9.74	100 125, 8.62 548, 15.52 870 450, 12.74
COMPRESSOR DRIVE <small>for electric motor specs shown above</small>	Model Number	40S2	50S2	253S2C ④	60S2	75S2	100S2	256S2C ④	
	Operating Pressure, Compressor Pulley, Motor Size (40° C rise), Motor Speed (nominal), MotorFrameSize(NEMA), Motor Pulley, "V" Belts (number & section)	PSIG, BAR O.D., Inches P.D., Inches O.D., Cm P.D., Cm HP RPM P.D. Inches, Cm	125, 8.62 22.375 21.600 56.83 54.86 40 1750 324T 9.0, 22.86 6, "C" Reg.	125, 8.62 22.375 21.600 56.83 54.86 50 1750 326T 10.6, 26.92 6, "C" Reg.	250, 17.24 22.375 21.600 56.83 54.86 60 1750 364T 10.6, 26.92 6, "C" Super	125, 8.62 22.375 21.600 56.83 4.86 60 1750 364T 8.5, 21.60 6, "C" Super	125, 8.62 22.375 21.600 56.83 54.86 75 1750 365T 10.6, 26.92 10, "C" Super	125, 8.62 22.375 21.600 56.83 54.86 100 1750 404T 10.6, 26.92 9, "C" Super	250, 17.24 22.375 21.600 56.83 54.86 125 1750 405T 10.6, 26.92 9, "C" Super
GENERAL	Model Number	40S2/50S2	253S2C ④	60S2/75S2	100S2	256S2C ④			
	Number of Cylinders, Bore Dia., Low Press., High Press., Stroke, Piston Speed/Rev., Oil Capacity, Intake Air Filters, number, type, make, Pipe Openings, Suction, Discharge, Inches, Intercooler type	Cylinder, Inches, Cm Cylinder, Inches, Cm Inches, Cm Ft., Cm Qts., Liters	3 (2) 8 1/8, 20.64 7 1/16, 17.94 5, 12.70 .833, 25.39 10, 9.46 (2) Dry, Donaldson 10"	3 (2) 8 1/8, 20.64 6 1/8, 15.56 5, 12.70 .833, 25.39 10, 9.46 (2) Dry, Don. 10"	6 (4) 7 1/16, 17.94 (2) 6 1/8, 15.56 5 1/4, 13.34 .875, 26.67 19, 17.98 (2) Dry, Donaldson 10"	6 (4) 8 1/8, 20.64 (2) 7 1/16, 17.94 5 1/4, 13.34 .875, 26.67 19, 17.98 (2) Dry, Donaldson 10"	6 (2) 6 1/8, 15.56 5 1/4, 13.34 .875, 26.67 19, 17.98 14"		

① Capacity of compressor is air actually delivered on the basis of intake conditions at the air intake filter.
 ② All metric equivalents appear in *italic* type.
 ③ Cooling fan is standard; available for clockwise or counterclockwise rotation.
 ④ 253 and 256 models have a high discharge air temperature shutdown switch; must be wired into controls.

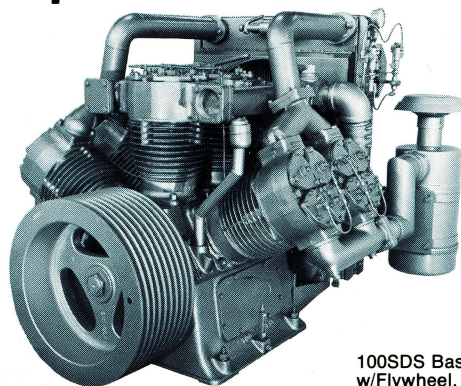
LeROI International, Inc., whose policy is to reserve the right to change its products, reserves the right to change this bulletin without incurring obligation on the part of the purchaser.

SPECIAL APPLICATIONS



S1 SDS SERIES Stationary Air Compressors

The S1 models are single stage compressors designed to deliver high volume, low pressure air. Blow air for blast hole cleaning on mobile rotary drill rigs is a typical application of these models. The SDS models are combination, dual-staged compressors. Simply turn two valves and they're easily changed from single stage to two stage operation, and vice versa, where volume and pressure requirements vary frequently. The S1 and SDS models have the same efficiency, economy, and simple service features as the S2 models.



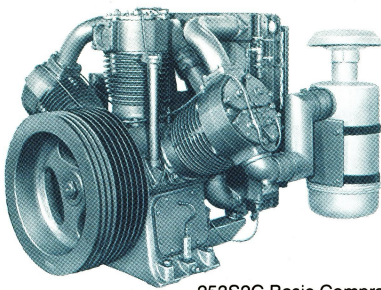
Basic Compressor	Model Number	50S1		75S1		100S1		50SDS				100SDS			
		③		③		③		Single Stage		Two Stage		Single Stage		Two Stage	
Brake Horsepower Required		55	51	100.2	86.5	127	114	47	46	54	67	117	105	115	145
Pressure,	PSIG	40	50	40	50	40	50	40	50	125	125	40	50	125	125
	BAR	2.76	3.45	2.76	3.45	2.76	3.45	2.76	3.45	8.62	8.62	2.76	3.45	8.62	8.62
Displacement,	CFM	450	390	746	622	945	822	413	360	261	302	871	755	548	632
	M ³ /min.	12.74	11.04	21.2	17.61	26.76	23.27	11.69	10.19	7.39	8.55	24.66	21.38	15.51	17.90
Rated Speed,	RPM	1000	870	1000	870	1000	870	1000	870	870	1000	1000	870	870	1000
Capacity ①	CFM	360	295	591	482	750	636	320	272	210	250	690	585	450	540
	M ³ /min.	10.20	8.35	16.73	13.64	21.24	18.01	9.06	7.70	5.95	7.08	19.54	16.57	12.74	15.29
General Specifications	Model Number	50S1		75S1		100S1		50SDS				100SDS			
		Single Stage		Two Stage		Single Stage		Two Stage		Single Stage		Two Stage			
Number of Cylinders		3		6		6		3		3		6		6	
Bore Dia., High Press. Cylinder, Inches		—		—		—		—		(1) 7 ¹ / ₁₆		—		(2) 7 ¹ / ₁₆	
	Cm	—		—		—		—		(1) 17.94		—		(2) 17.94	
Low Press. Cylinder, Inches		(3) 8 ¹ / ₁₆		(6) 7 ¹ / ₁₆		(6) 8 ¹ / ₁₆		(2) 8 ¹ / ₁₆ , (1) 7 ¹ / ₁₆		(2) 8 ¹ / ₁₆		(4) 8 ¹ / ₁₆ , (2) 7 ¹ / ₁₆		(4) 8 ¹ / ₁₆	
	Cm	(3) 20.64		(6) 17.94		(6) 20.64		(2) 20.64, (1) 17.94		(2) 20.64		(4) 20.64, (2) 17.94		(4) 20.64	
Stroke,	Inches	5		5 ¹ / ₄		5 ¹ / ₄		5		5		5 ¹ / ₄		5 ¹ / ₄	
	Cm	12.7		13.34		13.34		12.7		12.7		13.34		13.34	
Piston Speed,	Ft./Rev.	.833		.875		.875		.833		.833		.875		.875	
	Cm/Rev.	25.39		26.67		26.67		25.39		25.39		26.67		26.67	
Oil Capacity,	Quarts	10		19		19		10		10		19		19	
	Liters	9.46		17.98		17.98		9.46		9.46		17.98		17.98	
Air Intake Filters, number, type, make		—		—		—		(2) Dry, Donaldson - 14"				(2) Dry, Donaldson - 14"			
Pipe Openings, Suction, Discharge, Inches		3		3		3		3				3			

① Capacity of compressor is air actually delivered on the basis of intake conditions at the air intake filter.

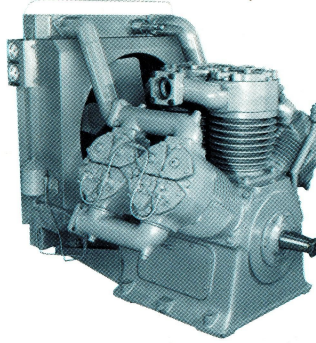
② All metric equivalents appear in *Italic* type.

③ Cooling fan is standard; available for clockwise or counterclockwise rotation.

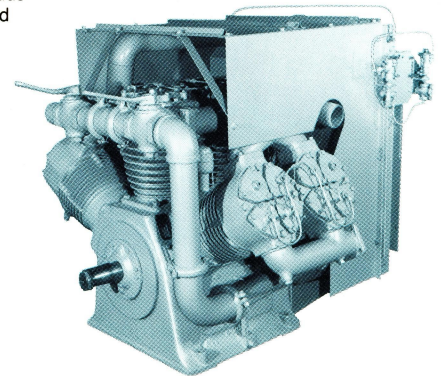
is one of continuous improvement of
e specifications or equipment noted in
ons as to units previously or subse-



253S2C Basic Compressor
w/Flywheel, Filters



256S2C Basic Compressor
Shown Without Shrouds
(Shrouds are included
as Standard)



256SDSC Basic Compressor
w/Shrouds

HIGH PRESSURE SERIES

Stationary Air Compressors

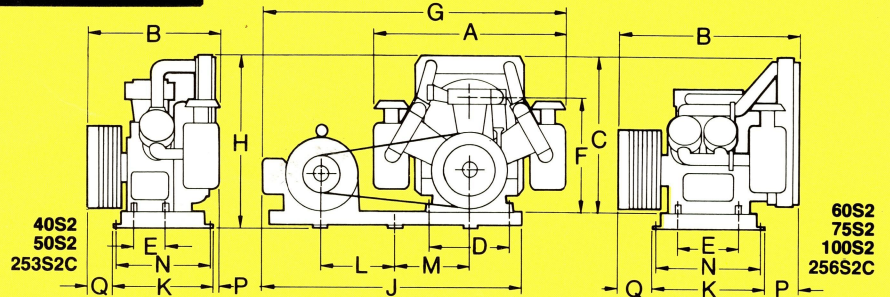
These performance proven, high pressure models are designed to provide high capacities for modern drilling applications. The service simplicity and ease of maintenance features of the entire line have been retained in these high pressure versions.

Basic Compressor	Model Number	Two Stage		Dual Stage	
		253S2C ④	256S2C ③ ④	Single Stage	Two Stage
Brake Horsepower Required		73	156	106	156
Pressure, PSIG, BAR		250, 17.24	250, 17.24	50, 3.45	250, 17.24
Displacement, CFM, M ³ /min.		299, 8.47	632, 17.90	812, 23.0	632, 17.90
Rated Speed ②		1000	1000	1000	1000
Capacity ①		241, 6.82	510, 14.44	610, 17.27	510, 14.44
General Specifications	Model Number	253S2C	256S2C	256SDSC	
Number of Cylinders		3	6	6	
Bore Dia., High Press.	Cylinder, Inches, Cm	6 1/8, 15.56	(2) 6 1/8, 15.56	—	(2) 6 1/8, 15.56
Low Press.	Cylinder, Inches, Cm	(2) 8 1/8, 20.64	(4) 8 1/8, 20.64	(4) 8 1/8, 20.64	(2) 6 1/8, 15.56 (4) 8 1/8, 20.64
Stroke,	Inches, Cm	5, 12.70	5 1/4, 13.34	5 1/4, 13.34	
Piston Speed,	Ft./Rev., Cm/Rev.	.833, 25.39	.875, 26.67	.875, 26.67	
Oil Capacity,	Quarts, Liters	10, 9.46	19, 17.98	19, 17.98	
Air Intake Filters, (number), type, make		(2) Dry, Donaldson-10"	(2) Dry, Donaldson-14"	(2) Dry Donaldson-14"	
Pipe Openings, Suction, Discharge, Inches		3	3	3	
Compressor, Pulley ②					
O.D. - Inches, Cm		19.0, 48.26	19.0, 48.26	19.0, 48.26	
P.D. - Inches, Cm		18.6, 47.24	18.6, 47.24	18.6, 47.24	
"V"-Belts (number & section)		6, "C" Super	10, "C" Super	10, "C" Super	

- ① Capacity of compressor is air actually delivered on the basis of intake conditions at the air intake filter.
- ② Other ratings and flywheel data available (21.6 P.D. w/9 "C" Grooves; 18.6 P.D. w/14 "5V" Grooves). Consult factory for details.
- ③ Directional airflow shrouds available for Models 256S2C, 256SDSC.
- ④ 253 and 256 models have a high discharge air temperature shutdown switch; must be wired into OEM controls.
- ⑤ All metric equivalents appear in italic type.

HIGH PRESSURE and S2 SERIES DIMENSIONS

Dimensions shown are not to be used in lieu of certified drawings.



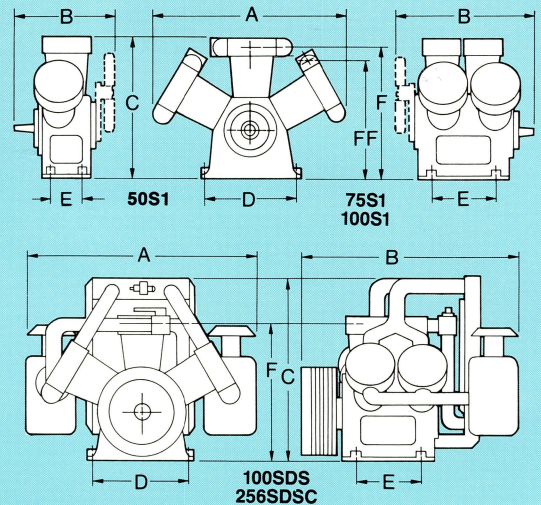
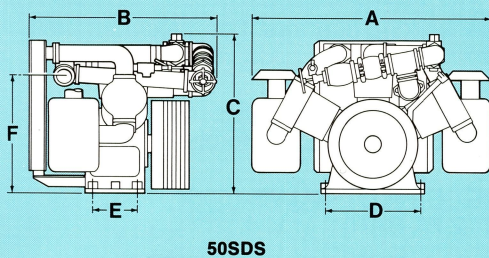
MODEL	DIMENSIONS IN INCHES AND CENTIMETERS															Approximate SHIPPING WEIGHT	
	A	B	C	D	E	F	G	H	J	K	L	M	N	P	Q	COMPRESSOR ONLY (With Flywheel) LBS./Kg.	WITH MOTOR & BEDPLATE LBS./Kg.
40S2	57 $\frac{1}{8}$ 145.1	47 $\frac{1}{4}$ 120.0	38 $\frac{1}{8}$ 96.8	22 $\frac{1}{2}$ 57.2	9 22.9	34 $\frac{1}{16}$ 86.5	82 $\frac{9}{16}$ 209.7	42 $\frac{3}{4}$ 108.6	68 172.7	28 $\frac{1}{2}$ 72.4	29 $\frac{1}{4}$ 74.3	22 $\frac{1}{2}$ 57.2	26 $\frac{1}{2}$ 67.3	1 $\frac{5}{8}$ 4.1	7 $\frac{1}{8}$ 18.1	1845 836.9	2706 1,227.4
50S2	57 $\frac{1}{8}$ 145.1	47 $\frac{1}{4}$ 120.0	38 $\frac{1}{8}$ 96.8	22 $\frac{1}{2}$ 57.2	9 22.9	34 $\frac{1}{16}$ 86.5	82 $\frac{9}{16}$ 209.7	42 $\frac{3}{4}$ 108.6	68 172.7	28 $\frac{1}{2}$ 72.4	29 $\frac{1}{4}$ 74.3	22 $\frac{1}{2}$ 57.2	26 $\frac{1}{2}$ 67.3	1 $\frac{5}{8}$ 4.1	7 $\frac{1}{8}$ 18.1	1880 852.7	2757 1,250.6
253S2C	57 $\frac{1}{8}$ 145.1	47 $\frac{1}{4}$ 120.0	38 $\frac{1}{8}$ 96.8	22 $\frac{1}{2}$ 57.2	9 22.9	34 $\frac{1}{16}$ 86.5	85 215.9	42 $\frac{3}{4}$ 108.6	68 172.7	28 $\frac{1}{2}$ 72.4	29 $\frac{1}{4}$ 74.3	22 $\frac{1}{2}$ 57.2	26 $\frac{1}{2}$ 67.3	1 $\frac{5}{8}$ 4.1	7 $\frac{1}{8}$ 18.1	1910 866.3	2800 1,270.0
60S2	57 $\frac{3}{8}$ 145.7	59 $\frac{1}{8}$ 150.2	45 $\frac{5}{8}$ 115.9	24 61.0	18 45.7	35 $\frac{1}{2}$ 90.2	87 221.0	50 $\frac{5}{8}$ 128.6	75 190.5	33 83.8	22 55.9	22 55.9	31 78.7	11 $\frac{1}{4}$ 28.6	7 $\frac{1}{8}$ 18.1	2400 1,088.6	3980 1,805.3
75S2	57 $\frac{3}{8}$ 145.7	59 $\frac{1}{8}$ 150.2	45 $\frac{5}{8}$ 115.9	24 61.0	18 45.7	35 $\frac{1}{2}$ 90.2	87 221.0	50 $\frac{5}{8}$ 128.6	75 190.5	33 83.8	22 55.9	22 55.9	31 78.7	11 $\frac{1}{4}$ 28.6	7 $\frac{1}{8}$ 18.1	2480 1,124.7	4060 1,841.6
100S2	57 $\frac{3}{8}$ 145.7	59 $\frac{1}{8}$ 150.2	45 $\frac{5}{8}$ 115.9	24 61.0	18 45.7	35 $\frac{1}{2}$ 90.2	90 228.6	50 $\frac{5}{8}$ 128.6	75 190.5	33 83.8	22 55.9	22 55.9	31 78.7	11 $\frac{1}{4}$ 28.6	7 $\frac{1}{8}$ 18.1	2540 1,152.1	4275 1,939.1
256S2C	65 $\frac{3}{8}$ 166.1	64 $\frac{1}{8}$ 162.9	46 $\frac{5}{8}$ 118.4	24 61.0	18 45.7	35 $\frac{3}{8}$ 89.9	90 228.6	51 $\frac{5}{8}$ 131.1	75 190.5	33 83.8	22 55.9	22 55.9	31 78.7	15 $\frac{1}{4}$ 38.7	8 $\frac{1}{8}$ 20.6	2600 1,179.3	4375 1,984.5

*Typical minimum dimensions. Other installation layouts are possible.

Note: All metric equivalents are in *italic type*.

S1 SDS SERIES DIMENSIONS

Dimensions shown are not to be used in lieu of certified drawings.



MODEL	DIMENSIONS IN INCHES AND CENTIMETERS							Approximate SHIPPING WEIGHT	
	A	B*	C	D	E	F	FF	WITH FLYWHEEL LBS./Kg.	WITHOUT FLYWHEEL LBS./Kg.
50S1	48 $\frac{1}{2}$ 123.2	27 $\frac{7}{16}$ 69.7	38 $\frac{1}{2}$ 97.8	22 $\frac{1}{2}$ 57.2	9 22.9	34 $\frac{5}{16}$ 87.2	23 $\frac{1}{4}$ 59.1	1425 646.4	1000 453.6
75S1/ 100S1	53 134.6	39 $\frac{1}{32}$ 99.1	38 $\frac{1}{4}$ 97.2	24 61.0	18 45.7	34 86.4	31 $\frac{7}{8}$ 81.0	2095 950.3	1670 757.5
50SDS	61 $\frac{7}{16}$ 156.1	45 $\frac{5}{8}$ 114.6	38 $\frac{1}{2}$ 97.8	22 $\frac{1}{2}$ 57.2	9 22.9	29 $\frac{1}{4}$ 74.3	—	1925 873.2	1500 680.4
100SDS	62 $\frac{5}{8}$ 159.1	58 $\frac{9}{16}$ 148.1	46 $\frac{5}{8}$ 118.4	24 61.0	18 45.7	34 $\frac{1}{4}$ 87.0	—	2600 1,179.4	2175 986.6
256SDSC	65 $\frac{3}{8}$ 166.1	64 $\frac{1}{2}$ 163.8	46 $\frac{5}{8}$ 118.4	24 61.0	18 45.7	34 $\frac{1}{4}$ 87.0	—	2645 1,199.8	2220 1,007.0

* 50S1 and 100S1 are without flywheel.