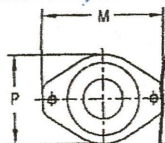
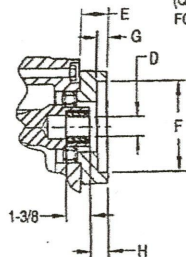
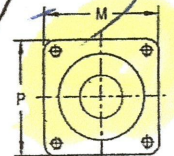


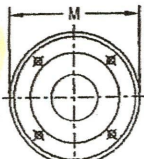
SEE CHART FOR  
(QTY) J HOLES ON K B.C.  
FOR EACH FLANGE SIZE



SAE A-2  
SAE A-2CL  
SAE A-2CL2000  
SAE B-2  
SAE C-2



SAE B-4  
SAE C-4



NEMA 56C  
NEMA 182TC

TORQUE ARM KITS ARE  
AVAILABLE SEE PAGE F-53.

ADDITIONAL RATIOS,  
OUTPUT BORES AND INPUT  
BORES ARE AVAILABLE --  
CONSULT FACTORY.

**FOR LUBRICATION AND INSTALLATION  
INSTRUCTIONS - REFER TO SECTION R**

**DRY SHIPPING WEIGHT 130 LBS.**

**OPTIONAL LOW SPEED  
BORE SIZES AVAILABLE**

1-15/16, 2", 2-3/16, 2-7/16, 2-1/2, 3"

**INPUT BUSHING SIZES**

**D**

.625 DIA. - 3/16 X 3/32 KW	1.125 DIA. - 1/4 X 1/8 KW	1" - 6B SPLINE	14T - 12/24 D.P. SPLINE
.875 DIA. - 3/16 X 3/32 KW	1.250 DIA. - 1/4 X 1/8 KW	9T - 16/32 D.P. SPLINE	15T - 16/32 D.P. SPLINE
1.000 DIA. - 1/4 X 1/8 KW	1.250 DIA. - 5/16 X 1/8 KW	13T - 16/32 D.P. SPLINE	21T - 16/32 D.P. SPLINE

FLANGE	E	COUNTERBORE F	G	H	(QTY) J HOLES	B.C. DIA. K	M	P
A-2	1-1/4	3.251 / 3.253	5/16	51/64	(2) 3/8 NC	4-3/16	6-7/8	5-1/4
A-2CL	1-1/4	3.251 / 3.253	3/16	51/64	(2) 1/2 NC	4-3/16	6-7/8	5-1/4
A-2CL2000	1-1/4	3.251 / 3.253	5/16	51/64	(2) 1/2 NC	4-3/16	6-7/8	5-1/4
B-2	1-1/4	4.001 / 4.003	7/16	51/64	(2) 1/2 NC	5-3/4	6-7/8	5-1/4
B-4	1-1/4	4.001 / 4.003	7/16	51/64	(4) 1/2 NC	5	5-1/8	5-1/8
C-2	1-1/4	5.001 / 5.003	9/16	51/64	(2) 5/8 NC	7-1/8	8-1/2	6-1/8
C-4	1-1/4	5.001 / 5.003	9/16	51/64	(4) 1/2 NC	6-3/8	6-1/8	6-1/8
56C	2	4.502 / 4.504	5/16	1-35/64	(4) 13/32 DIA.	5-7/8	6-9/16	--
182TC	2-9/16	8.501 / 8.504	5/16	2-7/64	(4) 17/32 DIA.	7-1/4	9-1/8	--