

### 3.6 AIR FOOT THROTTLE (H-I-A Controlair Valve - P52971-1)

The H-I-A Controlair valve is foot operated, three-way, normally closed, open exhaust, pressure control valve. The operator for the H-I-A Controlair Valve has a toe treadle.

Installation: The H-I-A Controlair Valve is mounted directly to the operator's platform by two bolts through the lugs in the pipe bracket. The platform serves as a stop for the treadle.

Controlair Valve utilizes a pipe bracket. Piping connections made to the pipe bracket need not be disturbed when removing the operator portion for maintenance.

Maintenance: Maintenance periods should be scheduled in accordance with frequency of use and working environment of the Controlair Valves.

One complete Controlair Valve should be kept in stock for each four valves in service. During the maintenance period change out the complete valve with the "stand-by" unit. This will reduce production loss and afford inspection and replacement of worn parts at a more opportune time in a favorable location.

Notice that the operating portion of the valve can be removed without disturbing the pipe connections. Remove the valve from the pipe bracket by loosening studs 8 and lift the valve free.

No special tools are required to maintain the H-I-A Controlair Valve.

Completely disassemble the Controlair Valve. Wash all metal parts in a non-flammable solvent and all rubber parts with soap and water. Blow dry with a low pressure air jet and arrange the parts on a clean white surface in the order of the exploded view.

Examine each part carefully. Flex the diaphragm and packing rings; if cracked or worn, replace them. Replace all parts that may not provide satisfactory service

## AIR FOOT THROTTLE (Cont'd):

until the next maintenance period.

As reassembly proceeds, lubricate each part. Use No. 107 Lubriplate on metal to metal surfaces and Cosmolube on all rubber parts. Equivalent greases to those recommended can be used.

Store the reconditioned Controlair Valve in a moisture-proof bag.

Adjustments: Two adjustments can be made to the H-I-A Controlair Valve. Adjusting screw 3 is a pedal stop and adjusting screw 27 changes the pressure setting. Adjustable stop 3 changes the angle of pedal travel and, if not compensated for by the pressure adjustment, will change the maximum pressure slightly. This adjustment should be set to provide a minimum pedal travel to protect the valve assembly from unnecessary mechanical force.

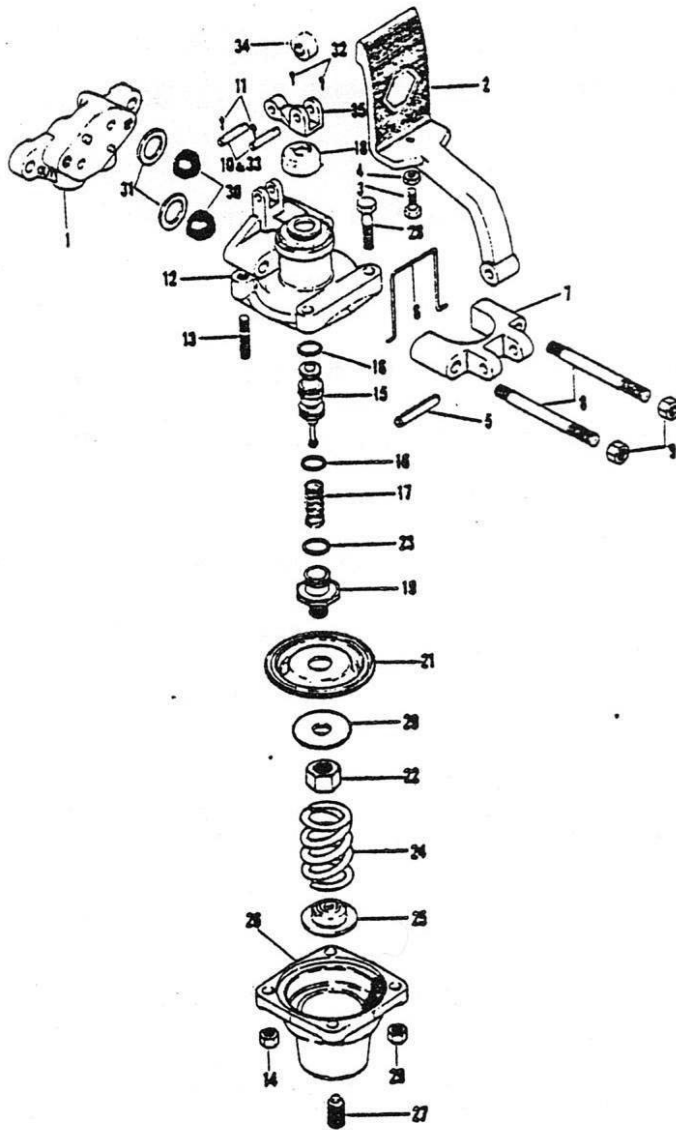
Pressure adjusting screw 27 varies the minimum and maximum pressure setting a like amount without changing the range of pressure. Turning the adjusting screw in increases the maximum and minimum pressure setting; turning it out decreases the maximum and minimum pressure.

The pressure range can be changed only by changing the control spring 24. These springs are interchangeable.

# PARTS LIST

## H-1-A CONTROL AIR VALVE

SEE PAGE 6 FOR COMPLETE PIECE NUMBERS



Ref. No.	Description	Pc. No.
1	BRACKET, (Incl. 8 & 9)	P53122
2	PEDAL	P52872
3	SCREW, Pedal Stop	521656
4	NUT, 1/4"-20	521216
5	PIN, Roll	P49803-17
6	RETAINER, Lever	P53121
7	FULCRUM, Pedal	P52873
8	STUD (2 req'd)	523180
9	NUT (2 req'd)	P49876-1
10	PIN, Lever	P50686-3
11	PIN, Cotter (2 req'd)	93256
12	BODY	526465
13	STUD, 5/16"-18 x 1-5/16" (2 req'd)	P49906-14
14	NUT, 5/16"-18 (2 req'd)	96500
15*	INLET & EXHAUST VALVE (Incl. 16)	545536
16*	RING, 3/4" O.D. "O" (2 req'd)	531868
17*	SPRING, Exhaust Valve	P54653
18*	PROTECTOR, Dirt	526344
19	SEAT, Exhaust Valve	P55484
20	FOLLOWER, Diaphragm	526345
21*	DIAPHRAGM	526346
22	NUT	526489
23*	RING, 3/4" O.D. "O"	P49708-16
24*	SPRING, Control	
a	0-65 psi	P55442
b	0-100 psi	526749
25	SEAT, Spring	526347
26	HOUSING, Spring	545616
27	SCREW, Adjusting	536005
28	SCREW, Housing (2 req'd)	107187
29	NUT, 5/16"-18 (2 req'd)	96500
30	STRAINER (2 req'd)	P55382
31*	GASKET (2 req'd)	558515
32*	PIN, Cotter (2 req'd)	93256
33*	PIN, Cam	P50686-8
34	ROLLER, Cam	P55496
35	LEVER, Cam	P51127

\* Recommend spare parts to be retained in stock at all times.