

b. Cleaning, Inspection, and Repair.

- (1) Clean all parts in an approved solvent and dry with filtered compressed air.
- (2) Inspect forks for cracks, distortion, and wear.
- (3) Check splines of slip joints for scores, pitting, and excessive wear.
- (4) Inspect shift levers for cracks, corrosion, and damaged knobs.
- (5) Check shift rods for cracks, breaks, and wear at ball and interlock detents.
- (6) Inspect control and transmission housings for cracks, breaks, corrosion, and other damage.
- (7) Inspect bearings for pitting, wear, and scoring.
- (8) Inspect gears for cracked, chipped, broken, and worn teeth.
- (9) Inspect shafts for scores, scratches, and excessive wear.
- (10) Replace all gaskets and seals.
- (11) Replace any parts found defective, damaged, or excessively worn.

NOTE

If either bearing race (45) or bearing (46) are defective, both the bearing race and bearing must be replaced.

c. Reassembly

- (1) Reassemble the auxiliary transmission by reversing disassembly procedures.
- (2) Refer to Chapter 2 for procedures and service the transmission with lubricant.

3-37. CHAIN FEED DRIVE ASSEMBLY WITH TRANSMISSION (Figure 3-43).

a. Disassembly.

- (1) Remove the cotter pin (1), nut (2), cotter pin (3), sprockets (4 and 5), and chain (6).

NOTE

When removing sprockets (4 and 5), pull the sprockets off the shafts on the fluid motor (58) and transmission (13) simultaneously. When either sprocket clears the

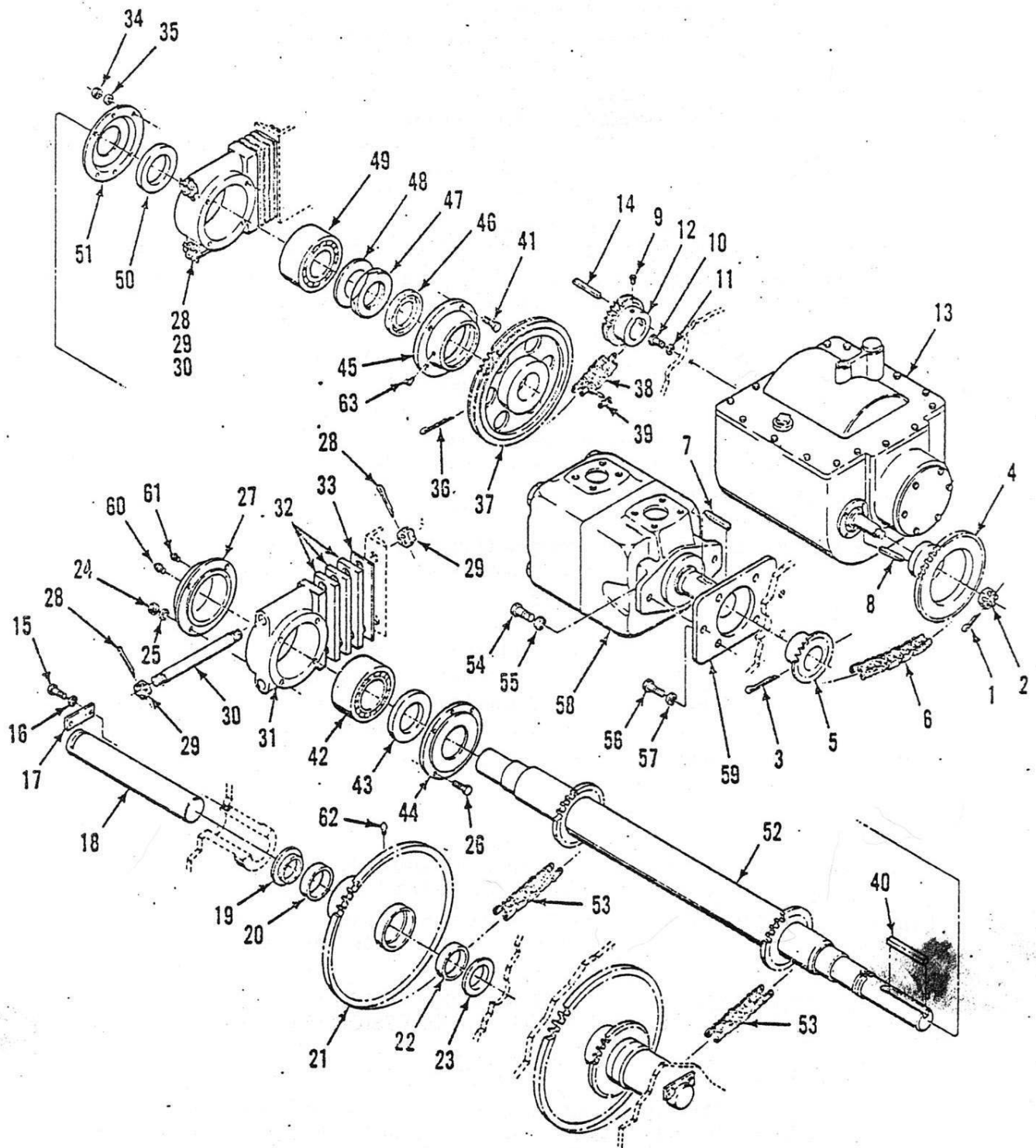


Figure 3-43. Chain Feed Drive Assembly with Transmission

- |                  |                     |                    |
|------------------|---------------------|--------------------|
| 1. COTTER PIN    | 22. BEARING         | 43. SEAL           |
| 2. NUT           | 23. SEAL            | 44. RETAINER PLATE |
| 3. COTTER PIN    | 24. NUT             | 45. RETAINER PLATE |
| 4. SPROCKET      | 25. LOCKWASHER      | 46. SEAL           |
| 5. SPROCKET      | 26. BOLT            | 47. NUT            |
| 6. CHAIN         | 27. RETAINER PLATE  | 48. WASHER         |
| 7. KEY           | 28. COTTER PIN      | 49. BEARING        |
| 8. KEY           | 29. NUT             | 50. SEAL           |
| 9. SETSCREW      | 30. STUD            | 51. RETAINER PLATE |
| 10. BOLT         | 31. PILLOWBLOCK     | 52. SHAFT          |
| 11. LOCKWASHER   | 32. SPACER          | 53. CHAIN          |
| 12. SPROCKET     | 33. SPACER          | 54. BOLT           |
| 13. TRANSMISSION | 34. NUT             | 55. LOCKWASHER     |
| 14. KEY          | 35. LOCKWASHER      | 56. BOLT           |
| 15. BOLT         | 36. COTTER PIN      | 57. LOCKWASHER     |
| 16. LOCKWASHER   | 37. SPROCKET        | 58. MOTOR          |
| 17. SHAFT LOCK   | 38. CHAIN           | 59. ADAPTER        |
| 18. SHAFT        | 39. DISCONNECT LINK | 60. FITTING        |
| 19. SEAL         | 40. KEY             | 61. VALVE          |
| 20. BEARING      | 41. BOLT            | 62. FITTING        |
| 21. SPROCKET     | 42. BEARING         | 63. FITTING        |

Legend for 3-43. Chain Feed Drive Assembly With Transmission

shaft on which it was mounted, the chain (6) can be removed.

(2) Remove keys (7 and 8).

(3) Disconnect hoses to the fluid motor (58). Remove bolts (54), lockwashers (55) and remove the fluid motor.

(4) Remove the bolts (15) lockwashers (16), shaft lock (17), shaft (18), seals (19 and 23), bearings (20 and 22), and sprockets (21).

(5) Remove the bolts (15), lockwashers (16), shaft lock (17), shaft (18), seals (19 and 23), and spacers (32 and 33).

(7) Remove the cotter pin (36), sprocket (37), chain (38), sprocket (12) and keys (14 and 40).

(8) Remove nuts (34), lockwashers (35), bolts (41), retainer plate (45), seal (46), nut (47), and washer (48) from shaft (52).

(9) Remove the pillow block assemblies from the shaft (52) and remove the chains (53).

(10). Remove the retainer plate (51), seal (50), and bearing (49).

(11) Remove the nuts (24), lockwashers (25), bolts (26), retainer plates (27 and 44), seal (43), and bearing (42) from pillow block (31).

(12) Remove the bolt (56), lockwasher (57), and adapter (59).

**b. Cleaning, Inspection, and Repair**

(1) Clean all parts in an approved solvent and dry with filtered compressed air.

(2) Inspect sprockets for cracked, chipped, or broken teeth.

(3) Check chains for excessively worn or broken links.

(4) Inspect bearings for pitting, wear, and other damage.

(5) Replace all seals.

(6) Replace all parts worn or damaged beyond simple repair.

**c. Reassembly.** Reassemble the chain feed drive by reversing disassembly procedures.

**3-38. FLUID MOTOR, CHAIN FEED DRIVE (Figure 3-44).**