

3-36. AUXILIARY TRANSMISSION (Figure 3-42).

a. Disassembly

- (1) Refer to Chapter 2 for procedures and drain the transmission.
- (2) Remove nut (53), bolt (54), and spacers (55 and 56).
- (3) Remove bolts (2), lockwashers (3), and remove control housing (4) and shift levers as an assembly. Remove gasket (5).
- (4) Remove bolts (6), lockwashers (7), covers (8), and gaskets (9).
- (5) Remove bolts (10), lockwashers (11), cover (12), and shim (13).
- (6) Remove cotter pins (14), nuts (15), flanges (16), and mud rejectors (17).
- (7) Remove bolts (18), lockwashers (19), seal (20), cap (21), and gasket (22).
- (8) Remove bolts (23), lockwashers (24), bolts (25), lockwashers (26), seal (27), cap (28), and gasket (29).
- (9) Remove bearing (35) and spacer (36).
- (10). Remove bearing (31).
- (11) Slide main shaft (44) as far to the rear as possible and remove bearing (39).
- (12) Lift the main shaft (44) with gears attached through the opening in the top of the transmission housing (30).
- (13) Remove gear (32), collar (33) and gear (34).
- (14) Remove snap ring (40), clutch gear (41), collar (42), and gear (43) from main shaft (44).
- (15) Remove input shaft (38) and gear (37).
- (16) Remove bearing races (45) and bearings (46).
- (17) Remove the countershaft (52) with gears attached through the opening in the top of the transmission housing (30).
- (18) Remove nuts (57), bolts (58), shift levers (59), and knobs (60).
- (19) Remove capscrews (62), shafts (64 and 65), and forks (63).
- (20) Remove plug (70), balls (66), springs (67), interlock (68), and oil seals (69).

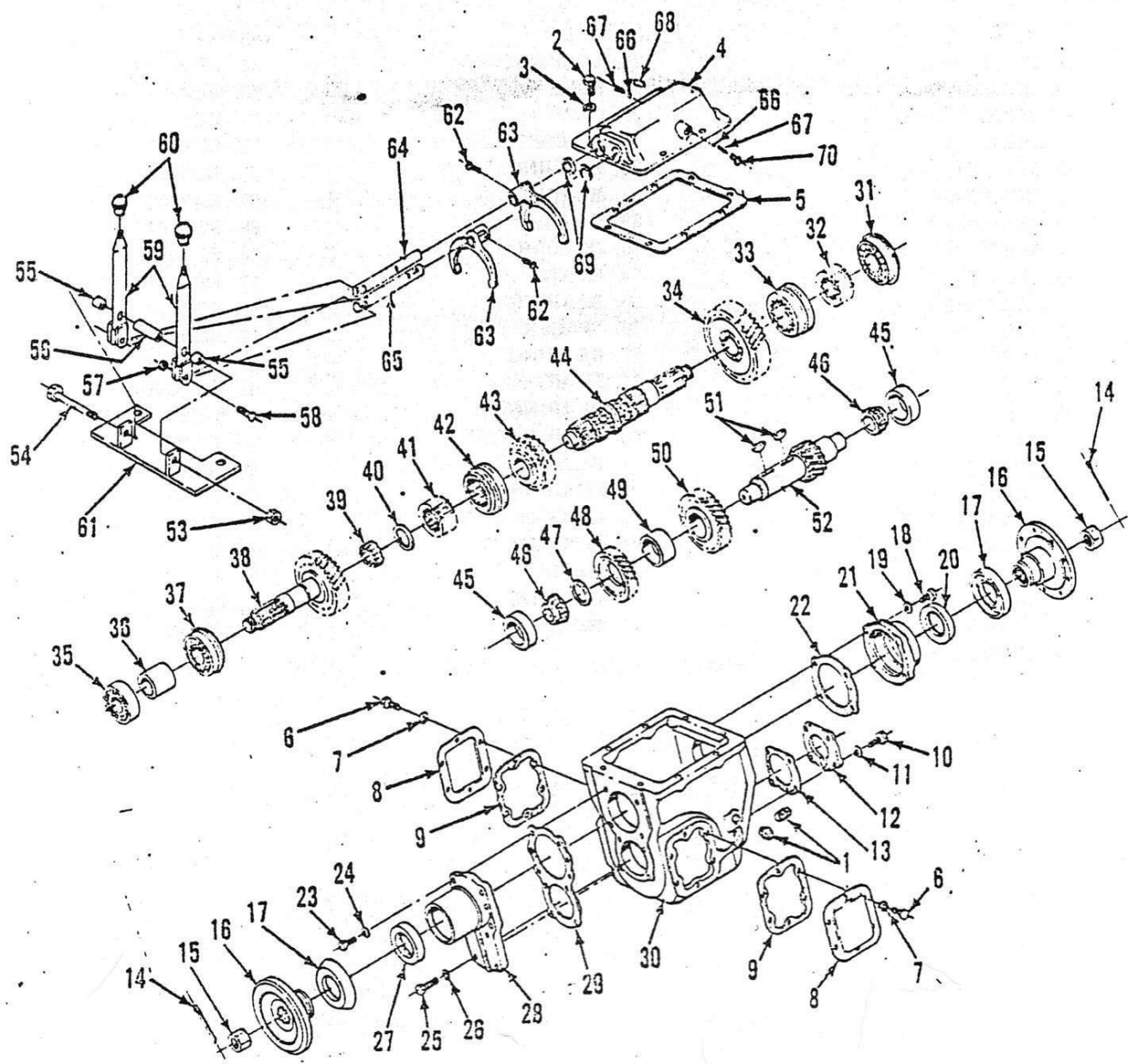


Figure 3-42. Auxiliary Transmission

1. PLUG
2. BOLT
3. LOCKWASHER
4. HOUSING
5. GASKET
6. BOLT
7. LOCKWASHER
8. COVER
9. GASKET
10. BOLT
11. LOCKWASHER
12. COVER
13. SHIM
14. PIN
15. NUT
16. FLANGE
17. MUD REJECTOR
18. BOLT
19. LOCKWASHER
20. SEAL
21. CAP
22. GASKET
23. BOLT
24. LOCKWASHER

25. BOLT
26. LOCKWASHER
27. SEAL
28. CAP
29. GASKET
30. HOUSING
31. BEARING
32. GEAR
33. COLLAR
34. GEAR
35. BEARING
36. SPACER
37. BEARING
38. SHAFT
39. BEARING
40. SNAP RING
41. GEAR
42. COLLAR
43. GEAR
44. MAINSHAFT
45. RACE
46. BEARING
47. RING

48. GEAR
49. SPACER
50. GEAR
51. KEY
52. COUNTERSHAFT
53. NUT
54. CAPSCREW
55. SPACER
56. SPACER
57. NUT
58. BOLT
59. SHIFT LEVER
60. KNOB
61. ANCHOR
62. BOLT
63. FORK
64. SHAFT
65. SHAFT
66. POPPET
67. SPRING
68. INTERLOCK
69. SEAL
70. PLUG

Legend for 3-42. Auxiliary Transmission

b. Cleaning, Inspection, and Repair.

- (1) Clean all parts in an approved solvent and dry with filtered compressed air.
- (2) Inspect forks for cracks, distortion, and wear.
- (3) Check splines of slip joints for scores, pitting, and excessive wear.
- (4) Inspect shift levers for cracks, corrosion, and damaged knobs.
- (5) Check shift rods for cracks, breaks, and wear at ball and interlock detents.
- (6) Inspect control and transmission housings for cracks, breaks, corrosion, and other damage.
- (7) Inspect bearings for pitting, wear, and scoring.
- (8) Inspect gears for cracked, chipped, broken, and worn teeth.
- (9) Inspect shafts for scores, scratches, and excessive wear.
- (10) Replace all gaskets and seals.
- (11) Replace any parts found defective, damaged, or excessively worn.

NOTE

If either bearing race (45) or bearing (46) are defective, both the bearing race and bearing must be replaced.

c. Reassembly

- (1) Reassemble the auxiliary transmission by reversing disassembly procedures.
- (2) Refer to Chapter 2 for procedures and service the transmission with lubricant.

3-37. CHAIN FEED DRIVE ASSEMBLY WITH TRANSMISSION (Figure 3-43).

a. Disassembly.

- (1) Remove the cotter pin (1), nut (2), cotter pin (3), sprockets (4 and 5), and chain (6).

NOTE

When removing sprockets (4 and 5), pull the sprockets off the shafts on the fluid motor (58) and transmission (13) simultaneously. When either sprocket clears the