

(1) Clean all parts in an approved solvent and dry with filtered compressed air. Ensure that all grooves in which o-rings fit are cleaned thoroughly.

(2) Inspect vanes (7 and 15) and rings (8 and 13) for excessive wear or damage and replace as necessary.

(3) Inspect the bearing (23) and bearing surface on the shaft for scoring, pitting, galling, or other damage.

(4) Replace all o-rings and seal (21).

(5) Replace all other parts considered to be unserviceable.

c. Reassembly. Reassemble the double pump by reversing disassembly procedures.

3-34. VANE PUMP, SUB DRIVE ASSEMBLY (Figure 3-40).

a. Disassembly

(1) Remove screws (1) to separate the cover (2), ring (7), and body (11).

(2) Remove the spring (3), pressure plate (4), bushing (5), and o-ring (6).

(3) Remove the rotor (8), vanes (9), and o-ring (10).

(4) Remove the snap ring (18), shaft assembly and shaft seal (12) from the body (11).

(5) Remove the snap ring (13), bearing (14), and key (16) from the shaft (15).

(16) Do not remove the pin (17) unless replacement is necessary.

b. Cleaning, Inspection, and Repair

(1) Clean all parts in an approved solvent and dry with filtered compressed air.

(2) Inspect vanes (9) and ring (7) for excessive wear or damage and replace as necessary.

(3) Inspect the bushing (5), bearing (14), and corresponding surfaces on the shaft (15) for scoring, pitting, galling or other damage.

(4) Replace all o-rings and the shaft seal (15).

(5) Replace all other damaged or excessively worn parts.

c. Reassembly. Reassemble the vane pump by reversing disassembly procedures.

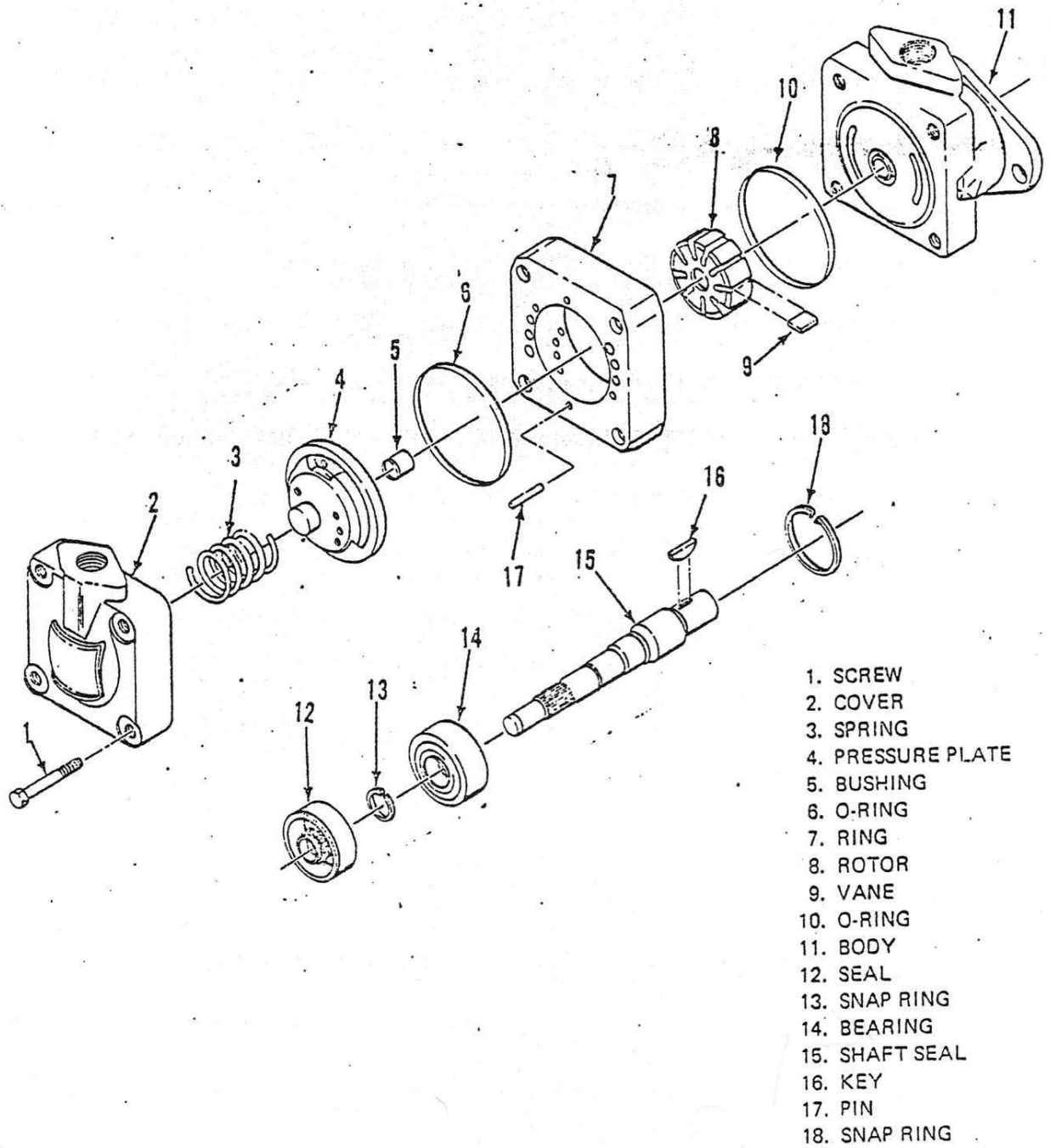


Figure 3-40. Vane Pump, Sub Drive Assembly