

- (3) Remove bearings (8), pocket seals (9), and thrust plate (10).
- (4) Remove shaft (11) from housing (12).
- (5) Remove pocket seals (13), thrust plate (14), bearings (15), spring (16), and bearing (17).
- (6) Remove matched gears (18) and gaskets (19) from gear housing (20).
- (7) Remove key (21) from shaft (11).

b. Cleaning, Inspection, and Repair

- (1) Wash all parts in an approved solvent and dry with filtered compressed air.
- (2) Inspect all parts for nicks, burrs, scores, and excessive wear.

NOTE

If either of the gears (18) require replacement, both gears must be replaced with a matched set.

- (3) Replace all seals, gaskets, and o-rings.

c. Reassembly.

- (1) Reassemble the drive motor by reversing disassembly procedures, and performing the following additional procedures.

(2) During reassembly, before tightening the bolts (5), rotate the drive shaft (11) to be sure the matched gears (18) are turning freely.

(3) After tightening the bolts (5), rotate the drive shaft (11) to be sure that no internal parts are binding.

3-26. CATHEAD TRANSMISSION (Figure 3-32).

a. Disassembly

- (1) Refer to Chapter 2 for procedures and drain the transmission.
- (2) Remove the screws (1), lockwashers (2), screw (3), lockwasher (4), cover (5), and gasket (6).
- (3) Remove screws (7) and covers (8).
- (4) Remove pin (9), knob (10), cap (11), retainer (12), spring (13), and lever (14).
- (5) Remove pin (15), nut (16), plunger (17), and spring (18).

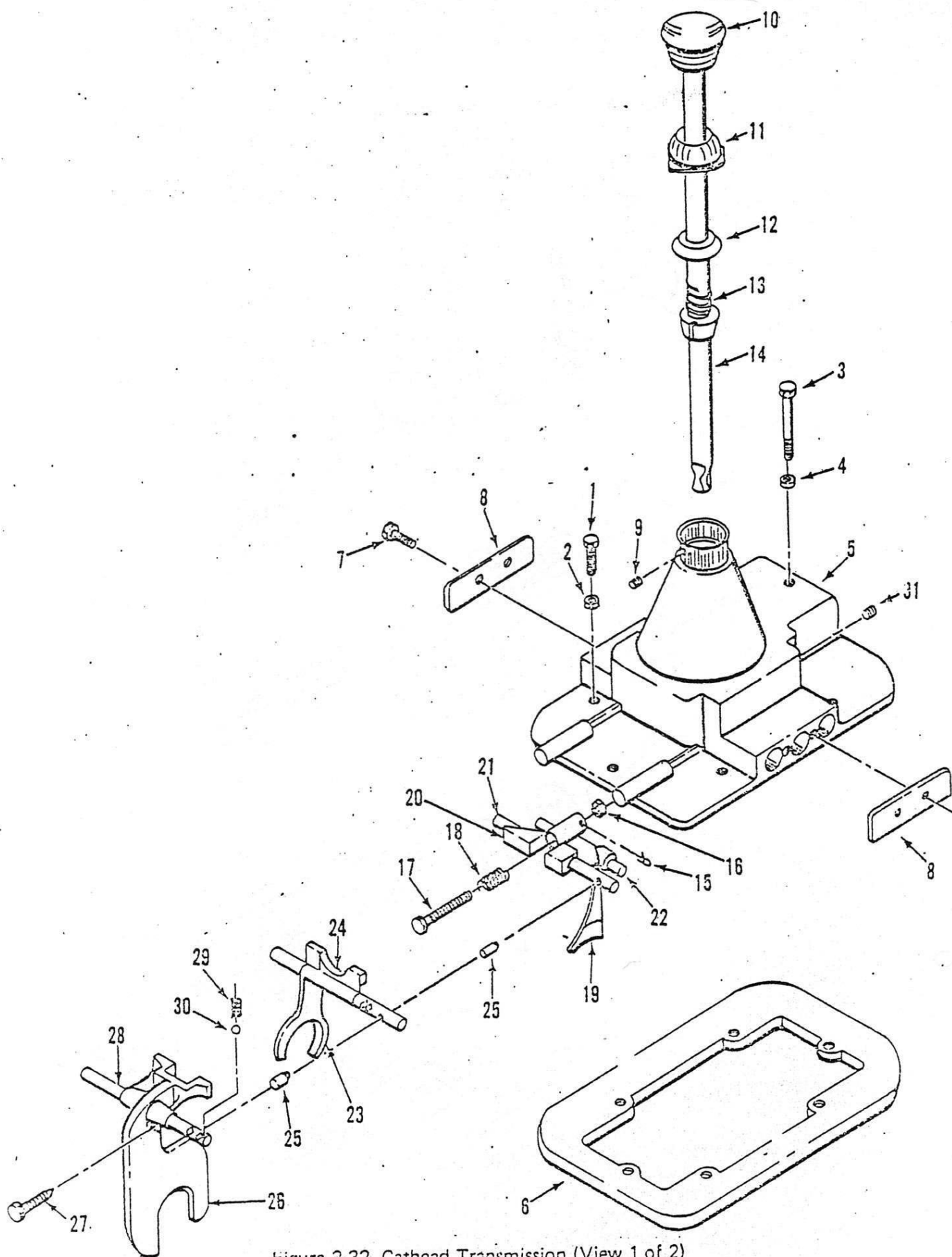


Figure 3-32. Cathode Transmission (View 1 of 2)

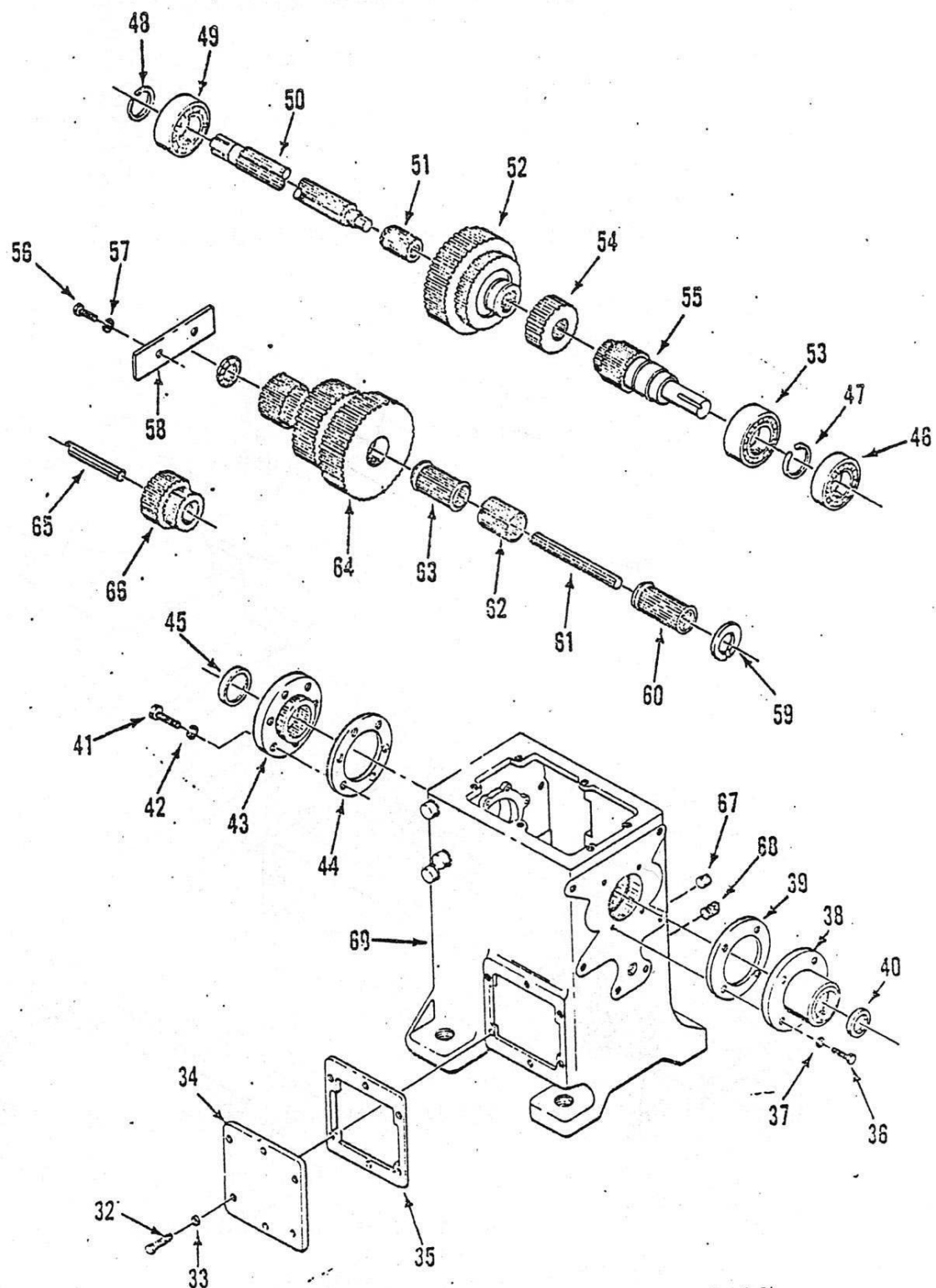


Figure 3-32. Cathead Transmission (View 2 of 2)

- | | | |
|---------------|----------------|----------------|
| 1. SCREW | 24. SHAFT | 47. SNAP RING |
| 2. LOCKWASHER | 25. POPPET | 48. SNAP RING |
| 3. SCREW | 26. YOKE | 49. BEARING |
| 4. LOCKWASHER | 27. SCREW | 50. SHAFT |
| 5. COVER | 28. SHAFT | 51. BEARING |
| 6. GASKET | 29. SPRING | 52. GEAR |
| 7. SCREW | 30. BALL | 53. BEARING |
| 8. COVER | 31. PLUG | 54. GEAR |
| 9. PIN | 32. SCREW | 55. SHAFT |
| 10. KNOB | 33. LOCKWASHER | 56. SCREW |
| 11. CAP | 34. COVER | 57. LOCKWASHER |
| 12. RETAINER | 35. GASKET | 58. PLATE |
| 13. SPRING | 36. SCREW | 59. WASHER |
| 14. LEVER | 37. LOCKWASHER | 60. BEARING |
| 15. PIN | 38. HOUSING | 61. SHAFT |
| 16. NUT | 39. GASKET | 62. SPACER |
| 17. PLUNGER | 40. SEAL | 63. BEARING |
| 18. SPRING | 41. SCREW | 64. GEAR |
| 19. YOKE | 42. LOCKWASHER | 65. SHAFT |
| 20. GATE | 43. CAP | 66. GEAR |
| 21. SHAFT | 44. GASKET | 67. PLUG |
| 22. SHAFT | 45. SEAL | 68. PLUG |
| 23. YOKE | 46. BEARING | 69. CASE |

Legend for Figure 3-32. Cathead Transmission

- (6) Remove yoke (19), gate (20), and shafts (21 and 22).
- (7) Remove the yoke (23), shaft (24), and poppets (25).
- (8) Remove the yoke (26), screw (27), shaft (28), spring (29), and ball (30).
- (9) Remove screws (32), lockwashers (33), cover (34), and gasket (35).
- (10) Remove screws (36), lockwashers (37), housing (38), gasket (39), and seal (40).
- (11) Remove screws (41), lockwashers (42), cap (43), gasket (44), and seal (45).
- (12) Remove the bearing (46), snap rings (47 and 48), bearing (49), shaft (50), bearing (51), and gear (52).
- (13) Remove the bearing (53), gear (54), and shaft (55).
- (14) Remove screws (56), lockwashers (57), and plate (58).
- (15) Remove the washer (59), bearing (60), shaft (61), spacer (62), bearing (63), and gear (64).
- (16) Remove the shaft (65) and gear (66).

b. Cleaning, Inspection, and Repair

- (1) Clean all parts with an approved solvent and dry with filtered compressed air.
- (2) Inspect yokes, shafts, and gate for damage or excessive wear.
- (3) Inspect gears for cracks, chipped, broken, and worn teeth.
- (4) Inspect bearings for pitting, wear, and scoring.
- (5) Replace any parts found defective or damaged.

c. Reassembly.

- (1) Reassemble the transmission by reversing disassembly procedures.
- (2) Refer to Chapter 2 for procedures and service the transmission with lubricant.

3-27. ROTARY TABLE SLIDING BASE ASSEMBLY (Figure 3-33).

a. Disassembly.

- (1) Disconnect the transfer cylinders from the sliding base assembly.
- (2) Remove the kelly and all connections to the rotary table.
- (3) Remove the nuts (1), lockwashers (2), and bolts (3) to disconnect the rotary table from the