

assembly (15).

h. Remove the follower nut (16), O-ring (17), washer (18), upper cup (19), and O-ring (20). Discard O-rings.

i. Remove the follower (21), seat (22), valve (23), spring (24), seat (25), and o-ring (26) from the plunger (27). Discard o-ring.

j. Remove retaining ring (38), washer (39), shaft (40) and bearings (42).

#### NOTE

Do not remove plugs (28, 43, and 44) or grease fitting (45) unless replacement is necessary.

k. Clean all parts in an approved solvent and dry thoroughly.

l. Inspect all parts for damage or excessive wear, and replace as necessary.

m. Use new o-rings and reassemble the water injection pump by reversing disassembly procedures.

### 3-14. WATER INJECTION DRIVE MOTOR (Figure 3-20) (CHARLYNN)

#### a. Disassembly

(1) Disconnect piping and remove the motor assembly. Remove the key (24).

(2) Remove screws (21), port block (21), and o-rings (23).

(3) Remove capscrews (1), lockwashers (2), mounting plate (5), and seal (4).

(4) Remove washer (6), seal (7), o-ring (8), bearing race (9), and bearing (10).

(5) Remove capscrews (11), seal washers (12), and end cap (13).

(6) Remove gerotor assembly (14), spacer plate (15), thrust bearing (16), drive (17), spacer (18), and shaft (26).

(7) Remove the plug (20) and o-ring (19).

#### NOTE

Do not remove the roll pin (3) unless replacement is necessary.

b. Cleaning. Clean all metal parts in an approved solvent.

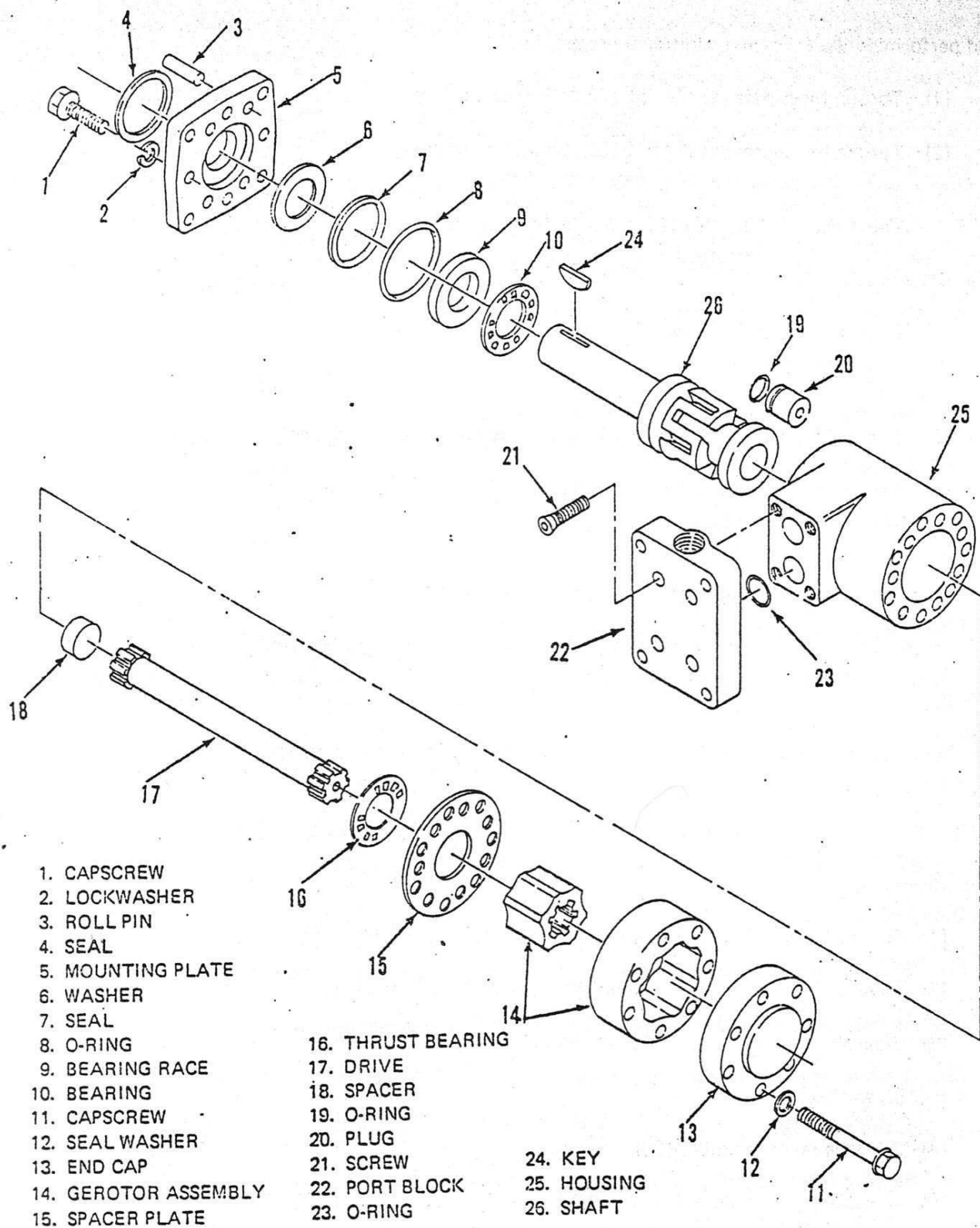


Figure 3-20. Water Injection Drive Motor (CHARLYNN)

c. Inspection. Inspect all parts for damage or excessive wear, and replace as necessary.

d. Reassembly. Use new o-rings. Reassemble the drive motor by reversing disassembly procedures, and performing the following additional procedures.

(1) Torque the capscrews (11) to  $175 \pm 25$  inch pounds.

(2) Torque the capscrews (1) to  $250 \pm 25$  inch pounds.

### 3-15. WATER INJECTION RELIEF VALVE (Figure 3-21).

#### a. Disassembly

(1) Disconnect the hose assembly from the valve body (14).

(2) Remove the pin (2), knob (3), and locknut (4).

(3) Remove the screws (1), cover (6), screw and pad assembly (5), and diaphragm (7).

(4) Remove the guide (8), spring (9), plunger (10), valve (13), and retainer (11) from the valve body (14).

b. Cleaning. Clean all metal parts in an approved solvent.

c. Inspection. Inspect all parts for serviceable condition. Check to be sure the diaphragm has not been ruptured.

d. Reassembly. Reassemble the relief valve by reversing disassembly procedures.

### 3-16. WATER INJECTION SYSTEM CONTROL VALVE (Figure 3-22).

#### a. Disassembly

(1) Remove plug (1), plug assembly (2), plug (3), plug assembly (4), spring (5), and poppet (6).

(2) Remove plug assembly (7), spool (8), spring (9), and dowel pin (10).

(3) Remove screws (11), cap (12), screw (13), washer (14), collar (15), washer (16), spacer (17), washer (18), and seal (19).

(4) Remove relief assembly (20).

(5) Remove flow divider assembly (22).

(6) Remove pin kit (23), handle (29), screws (24), bracket (25), washer (26), seal (27), and spool (28) from housing (30).