

**N.D.S. Drilling Supply**  
**26041 Newton Circle**  
**Elko, MN 55020**  
**Phone #952-461-3400**  
**Fax # 952-461-3403**

**BB12**

w/6-5/8" API Reg Pin

Wt. 1,225 lbs.

**EBB12-STD-Hammer**

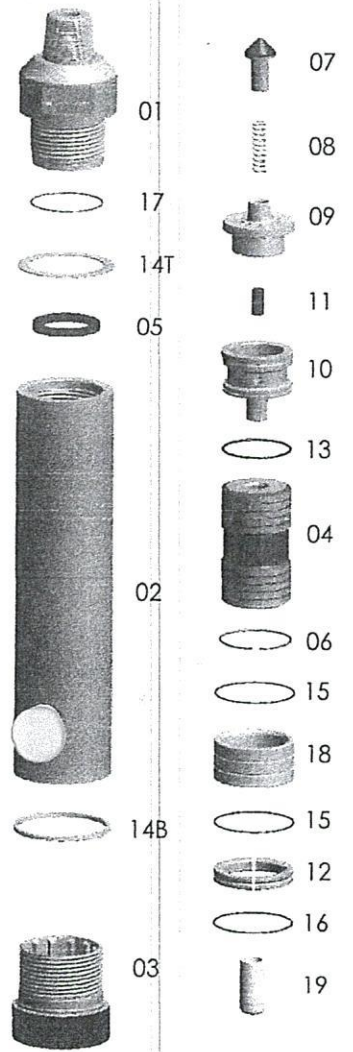
**\$20,100.00**

**TAKES QL120 SHANKS**

**Replacement Parts**

Hmr Part #	Description	Order #	Weight (lbs.)
BB12-01	Top Sub 6-5/8" API REG PIN w/O-Ring	EBB12-01	228
BB12-17	**Replacement O-Ring for Top Sub**	E12-17	0.1
BB12-02	Piston Case w/Retainer Ring	EBB12-02	509
BB12-06	**Replacement Retainer Ring for Piston Case**	E12-06	0.4
BB12-03	Chuck	EBB12-03	100
BB12-04	Piston	EBB12-04	170
BB12-05	Make Up Ring	E12-05	0.8
BB12-07	Check Valve Dart	E12-07	3.0
BB12-08	Check Valve Dart Spring	E12-08	0.3
BB12-09	Check Valve Guide	E12-09	30.0
BB12-10	Rigid Valve w/O-Ring	E12-10	32.0
BB12-13	**Replacement O-Ring for Rigid Valve**	E12-13	0.1
BB12-11	Choke Set (4)	E12-11	1.6
BB12-11A	Blank Choke	E12-11A	0.4
BB12-11B	1/8" Choke	E12-11B	0.4
BB12-11C	1/4" Choke	E12-11C	0.4
BB12-11D	3/8" Choke	E12-11D	0.4
BB12-12	Bit Retainer Ring w/O-Ring	EBB12-12	12
BB12-16	**Replacement O-Ring for Bit Retainer Ring**	E12-16	0.1
BB12-14T	Breakout Ring	EBB12-14T	2
BB12-14B	Breakout Ring	EBB12-14B	3
BB12-18	Bearing w/ (2) O-Rings	EBB12-18	0.1
BB12-15	**Replacement O-Ring for Bearing (uses 2)**	EBB12-15	0.1
BB12-19	Foot Valve	EQL120-24	1

Price is subject to change without notice.



	Outside Diameter		Hammer Length Shoulder To Shoulder			Bit Size Range			
	IN.	MM.	IN.	MM.	IN.	MM.			
BB12	11.2	285	55	1397	11 7/8 - 17 1/2	302 - 445			
<b>Choke Size</b>	<b>100</b>	<b>6.9</b>	<b>150</b>	<b>10.3</b>	<b>200</b>	<b>13.8</b>	<b>250</b>	<b>17.2</b>	
<b>IN.</b>	<b>MM.</b>	<b>PSI</b>	<b>BARS</b>	<b>PSI</b>	<b>BARS</b>	<b>PSI</b>	<b>BARS</b>	<b>PSI</b>	<b>BARS</b>
Blank	Blank	850	24.06	1200	33.98	1650	46.72	2000	56.63

The above air charts are based upon ideal conditions, your results may vary.