



Drill 10

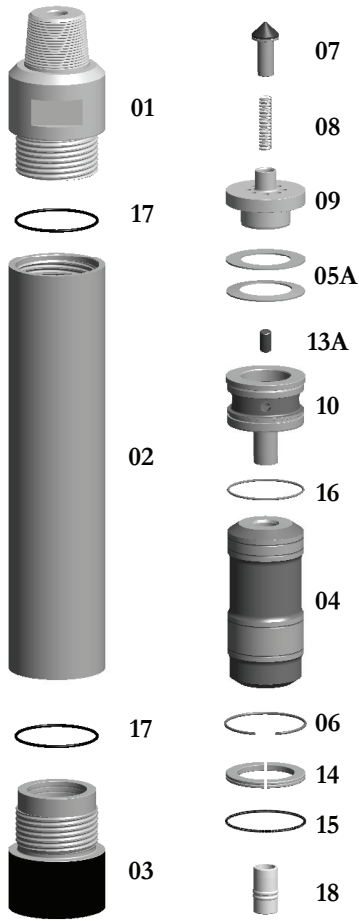
w/6-5/8" API Reg Pin

Wt. 690 lbs.

E10-STD-Hammer

TAKES SD10 SHANKS

**SPECIAL BACKHEAD FEATURES—CALL OFFICE



Replacement Parts

Hmr Part #	Description	Order #	Weight (lbs.)
10-01	Top Sub 6-5/8" API REG PIN w/O'Ring	E10-01	158.0
10-17	**Replacement O-Ring for Top Sub**	E10-17	1.0
10-2	Piston Case w/Retainer Ring	E10-02	240.0
10-06	**Replacement Retainer Ring for Piston Case**	E10-06	0.7
10-03	Driver Sub w/O-Ring	E10-03	93.0
10-17	**Replacement O-Ring for Driver Sub**	E10-17	1.0
10-04	Piston	E10-04	140.0
10-05A	Disc Spring & Spacer Set	E10-05A	1.5
10-07	Check Valve Dart	E8-07	1.5
10-08	Check Valve Dart Spring	E8-08	0.3
10-09	Check Valve Guide	E10-09	21.0
10-10	Rigid Valve w/O-Ring	E10-10	35.0
10-16	**Replacement O-Ring for Rigid Valve**	E10-16	1.0
10-13	Choke Set	E12-11(4)	1.5
10-13A	Blank Choke	E12-11A	0.3
10-13B	1/8" Choke	E12-11B	0.3
10-13C	1/4" Choke	E12-11C	0.3
10-13D	3/8" Choke	E12-11D	0.3
10-14	Bit Retainer Ring w/O-Ring	E10-14	3.0
10-15	**Replacement O-Ring for Bit Retainer**	E10-15	0.2
10-18	Foot Valve	E10-18	1.2
10-19	Brass Break-Out Ring (Optional)	E10-19	0.1

		Outside Diameter		Hammer Length Pin			Bit Size Range		
		IN.	MM.	IN.	MM.	IN.	MM.		
Drill 10		8-7/8	226	49-7/8	1266.8	9-7/8-12-1/2	251-318		
Choke Size		100	6.9	150	10.3	200	13.8	250	17.2
IN.	MM.	PSI	BARS	PSI	BARS	PSI	BARS	PSI	BARS
Blank	Blank	400	11.33	660	18.69	950	26.90	1235	34.98
1/8	3.18	420	11.90	685	19.40	985	27.90	1270	35.97
1/4	6.35	470	13.31	750	21.24	1025	24.03	1325	37.52
3/8	9.53	575	16.28	860	24.36	1150	32.57	1485	42.06
1/2	12.70	750	21.24	1080	30.59	1395	39.51	1690	47.86

The above air charts are based upon ideal conditions, your results may vary.