



BB5.5

w/3-1/2" API Reg Pin

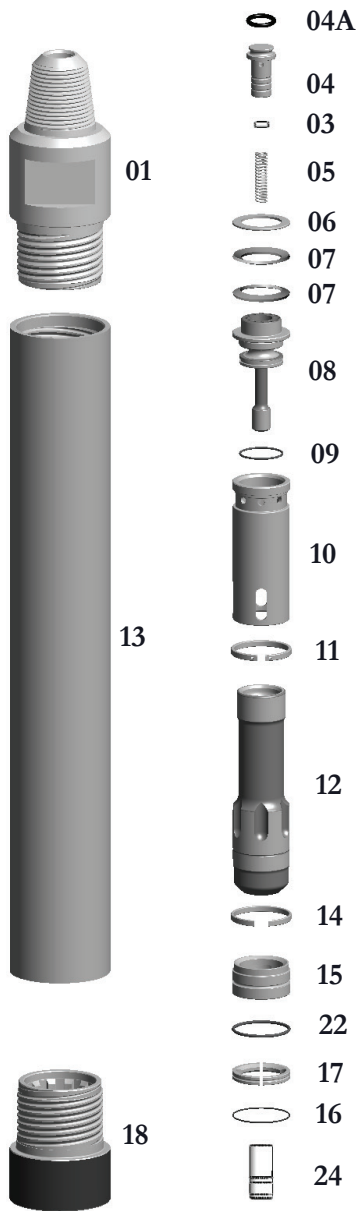
Wt. 146 lbs.

BB5-Hammer

TAKES QL5 SHANKS

Thread Change/Pin
Box Thread
Carbide Buttons
Special Flats

**SPECIAL BACKHEAD FEATURES—CALL OFFICE



Replacement Parts

Hmr Part #	Description	Order #	Weight (lbs.)
BB5.5-01	Backhead 3-1/2" API REG PIN	EBB5-01	42.0
BB5.5-03 (S)	Choke Set	EBB6-03(S)	0.3
BB5.5-03	Choke - Blank	EBB6-03	0.1
BB5.5-03A	1/8" Choke	EBB6-03A	0.1
BB5.5-03B	3/16" Choke	EBB6-03B	0.1
BB5.5-04	Check Valve Dart w/O-Ring	EBB6-04	1.1
BB5.5-04A	**Replacement O-Ring for Check Valve Dart**	EBB6-04A	0.1
BB5.5-05	Check Valve Dart Spring	EP6-05	0.4
BB5.5-06	Spacer	EBB5-06	0.2
BB5.5-07	Disc Spring (uses 2)	EBB5-07	0.3/ea
BB5.5-08	Air Distributor w/ O-Ring	EBB5-08	9.0
BB5.5-09	**Replacement O-Ring for Air Distributor**	EBB5-09	0.1
BB5.5-10	Cylinder w/Retainer Ring	EBB5-10	8.0
BB5.5-11	**Replacement Retainer Ring for Cylinder**	EBB5-11	0.5
BB5.5-12	Piston	EBB5-12	32.0
BB5.5-13	Wear Sleeve w/Retainer Ring	EBB5-13	79.0
BB5.5-14	**Replacement Retainer Ring for Wear Sleeve**	EBB5-14	0.2
BB5.5-15	Bearing w/ O-Ring	EBB5-15	4.0
BB5.5-22	**Replacement O-Ring for Bearing**	E6-14	0.2
BB5.5-17	Bit Retainer Ring w/O-Ring	EBB5-17	0.77
BB5.5-16	**Replacement O-Ring for Bit Retainer Ring**	EBB5-16	0.1
BB5.5-18	Chuck	EBB5-18	12.0
BB5.5-18-DM	Chuck - Ductile	EBB5-18-DM	12.0
BB5.5-20	Wear Washer (If Needed)	EBB5-20	0.1
BB5.5-24	Foot Valve	EQL5-22	0.5

	Outside Diameter		Hammer Length Pin		Hammer Length Box		Bit Size Range		
	IN.	MM.	IN.	MM.	IN.	MM.	IN.	MM.	
BB5.5	4-7/8	123.95	38-3/4	985.8	43	1089.7	5-1/4-6	139-149	
Choke Size	200 PSI	13.8 BARS	250 PSI	17.2 BARS	300 PSI	20.7 BARS	350 PSI	24.1 BARS	
IN.	MM.								
Blank	Blank	500	14.16	560	15.86	765	21.66	900	25.48
1/8	3.18	520	14.72	598	16.93	813	23.02	950	26.90
3/16	4.76	550	15.57	640	18.12	872	24.69	1022	28.94

The above air charts are based upon ideal conditions, your results may vary.