

3-522

1st Edition

NDS Drilling Supply, Inc.
26041 Newton Circle
Elko New Market, MN 55020
(952) 461-3400

FXD--B

10" STROKE

DUPLEX POWER PUMP

Parts List

3-522



**GARDNER-DENVER
PETROLEUM EQUIPMENT**

INSTRUCTIONS FOR ORDERING REPAIR PARTS

When ordering parts, specify complete eleven (11) character Pump Model, Size and Serial Number (see name plate on pump). Serial Number is also stamped on cylinder end of frame.

All orders for Parts should be placed with the nearest Sales and Service Office.

Reference numbers shown in the left hand column of the Parts Lists are used to help locate the parts shown on the Drawings and Sectional Views. DO NOT ORDER BY REFERENCE NUMBERS.

After locating the reference number, the part number may be found for your particular pump unit under the correct Model Number column.

Specify exactly the number of parts required (see column "Qty. Req. Per Pump"). DO NOT ORDER BY SETS.

To determine the Right Hand and Left Hand side of the pump, stand at the power end and face the fluid end of the pump.

PARTS RETURNED

All claims must be made within five days after receipt of goods. If order has been filled correctly, we cannot allow the return of the goods without our consent and then only a basis of a charge for service and rehandling plus transportation charges.

Transportation charges must be prepaid. If it is necessary to return a part to the factory for duplication or inspection, do not fail to do the following:

1. Write the nearest Sales and Service Office a letter advising what material you wish to return and why.
2. After receiving permission to return the item or items, obtain from the Sales and Service Office the correct forms filled out by that office for the proper return of material.
3. Place a tag in the package showing your name and address.
4. Tag each article in the box or package stating what and how many are returned.
5. Always give the serial number of the machine from which the parts were removed or the invoice number on which the parts were originally shipped.

All parts returned for credit should be handled in the same manner as that for duplication or inspection.

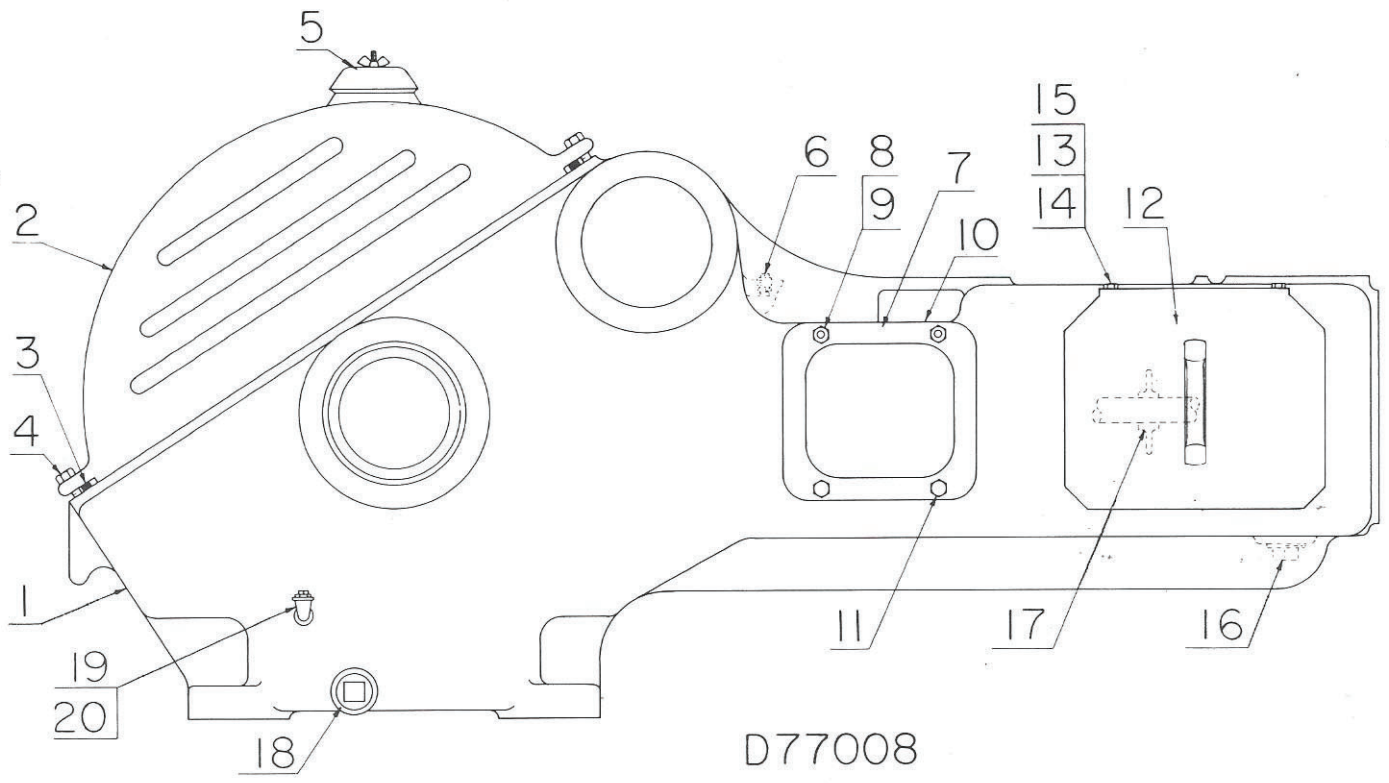
The current Model Identifications in this Parts List supersedes FYFXD, FDFXD and FCFXD.

(FYFXD) CURRENT	(FDFXD) CURRENT	(FCFXD) CURRENT
FXDA	FXDB	FXDD
FXDE	FXDC	FXDH
FXDJ	FXDF	FXDM
FXDN	FXDG	FXDQ
FXDR	FXDK	FXDU
	FXDL	
	FXDP	
	FXDS	
	FXDT	

INDEX

Connecting Rod & Crosshead	5	Pistons, Cup Type	15
Cylinder, Fluid	6 Thru 11	Pistons, Follower	14
Cylinder Liners	13	Pistons, Steel Insert	14
Eccentric & Shaft	4	Pistons, Solid	15
Eccentric Shaft Bearings	5	Puller, Crosshead Pin Bushing	25
Frame	2	Puller Valve Seat	22 Thru 24
Jackshaft	3	Rod Oiler	26, 27
Liner Puller	25	Stuffing Box	12
Oil Stop Head	4	Stuffing Box Gland	12
Ordering Instructions	1	Surge Chamber	28
Piston Rod	13	Valves	16 Thru 22

Order by Part Number and Description. Reference Numbers for your convenience only.



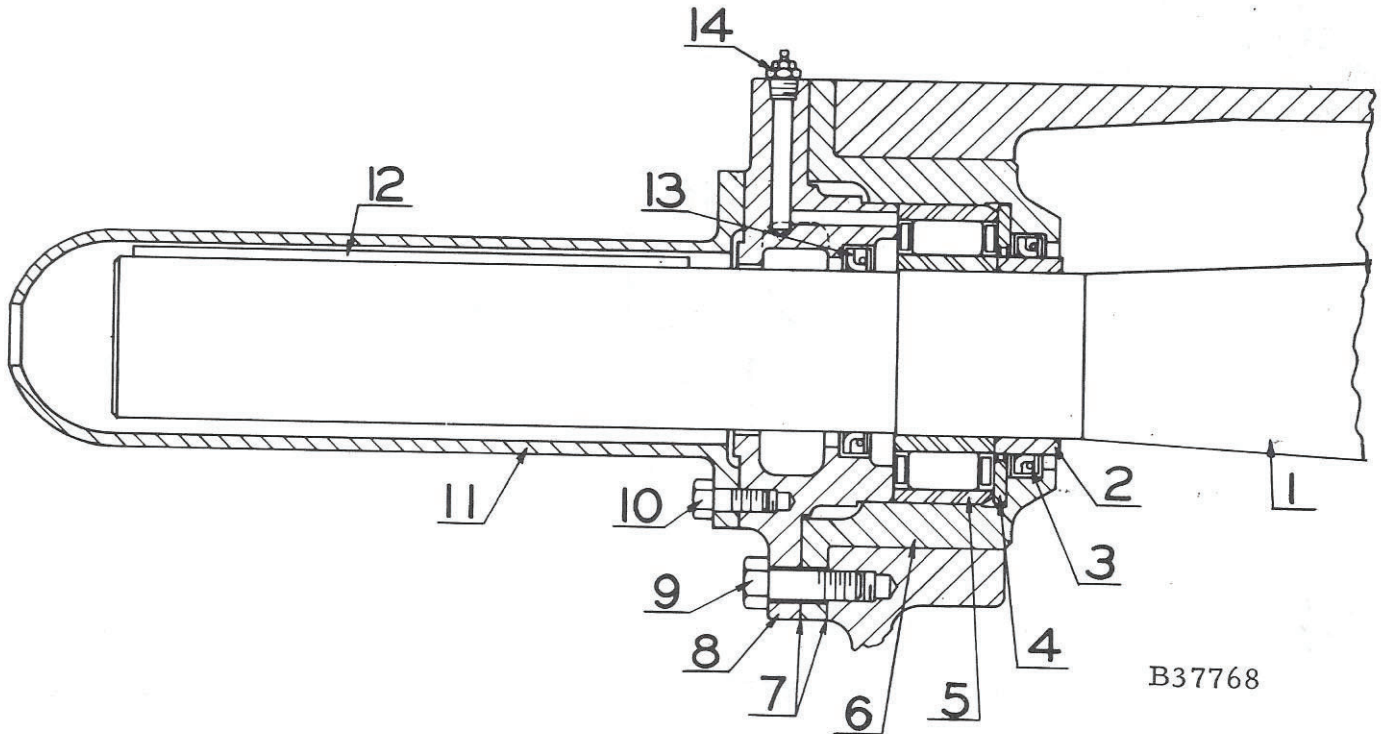
Ref. No.	Name of Part	Qty. Req. Per Pump	All FXD Models
----------	--------------	--------------------	----------------

FRAME

Part No.

1	ASM FRAME, Incl. Ref. #6, 8, 9, 18, 19 & 20	1	FXD172A
2	HOOD	1	200FXD053
3	GASKET, Hood	110"	2009457
4	SCREW, Hood	12	75AA1
5	COVER-FILLER	1	FXX880
6	PLUG-SqHd PIPE, Crosshead Oil	2	64AA5
7	PLATE-INSPECTION, Crosshead	2	FXD723
8	STUD, Crosshead Inspection Plate	4	79A6
9	NUT, Crosshead Inspection Plate Stud	4	50B5
10	GASKET, Crosshead Inspection Plate	2	25C1083
11	SCREW, Crosshead Inspection Plate	4	75AA1
12	PLATE-INSPECTION	2	200FXD052
13	STUD, Inspection Plate to Frame	4	79A438
14	WASHER-LOCK, Inspection Plate to Frame	4	95B5
15	NUT-HEX, Inspection Plate to Frame	4	50B5
16	PLUG-SqHd PIPE, Frame Sludge Drain	1	64A7
17	BAFFLE, Piston Rod	2	1FXX840
18	PLUG-SqHd PIPE, Frame Oil Drain	2	64A6
19	ELBOW-PIPE, Oil Level	2	64D4
20	PLUG-SqHd PIPE, Oil Level	2	64AA4

Order by Part Number and Description. Reference Numbers for your convenience only.

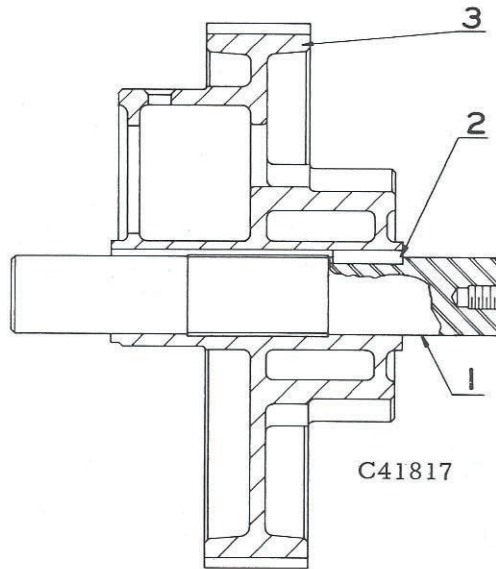


Ref. No.	Name of Part	Qty. Req. Per Pump	All FXD Models Part No.
JACKSHAFT			
1	JACKSHAFT	1	FXD371
2	SLEEVE-SHAFT	2	FXD289
3	SEAL-OIL, Bearing Housing	2	60G63
4	SPACER, Bearing	4	FXD376
5	BEARING, Jackshaft	2	12W6
6	HOUSING-BEARING	2	1FXD368
7	GASKET, Housing & Retaining Plate	4	25C1085
8	PLATE-BEARING RETAINING	2	3FXD370
9	SCREW, Housing & Retaining Plate	12	75A43
10	SCREW, Shaft Extension Cover	4	75A192
11	COVER-SHAFT EXTENSION	1	200FXD490
12	KEY, Jackshaft	1	35B167
13	SEAL-OIL, Bearing Retaining Plate	2	60G221
14	FITTING-LUB	2	40E5

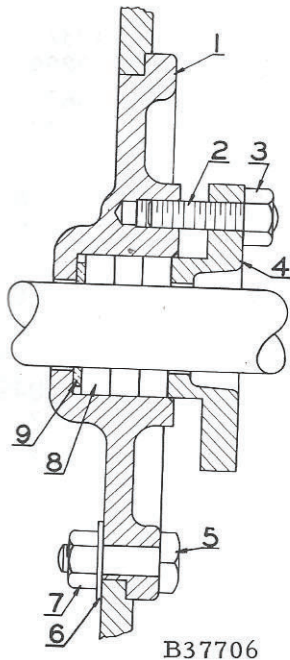
N.D.S. Drilling Supply
 26041 Newton Circle
 Elko, MN 55020
 Phone #952-461-3400
 Fax # 952-461-3403

Order by Part Number and Description. Reference Numbers for your convenience only.

N.D.S. Drilling Supply
 26041 Newton Circle
 Elko, MN 55020
 Phone #952-461-3400
 Fax # 952-461-3403

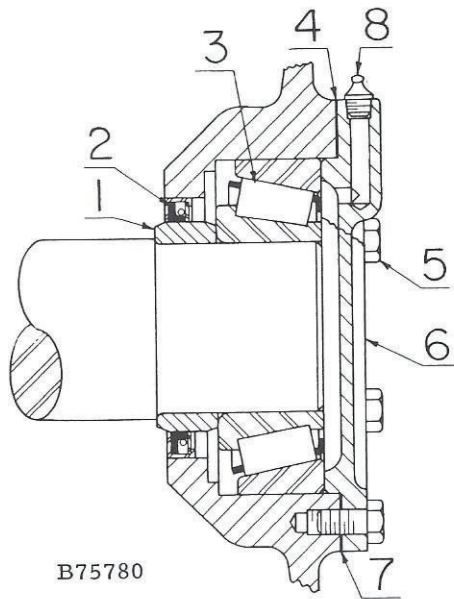


Ref. No.	Name of Part	Qty. Req. Per Pump	All FXD Models
ECCENTRIC & SHAFT			Part No.
1	SHAFT-ECCENTRIC	1	FXD367
2	KEY, Eccentric Shaft	1	35C68
3	ECCENTRIC	1	FXD255



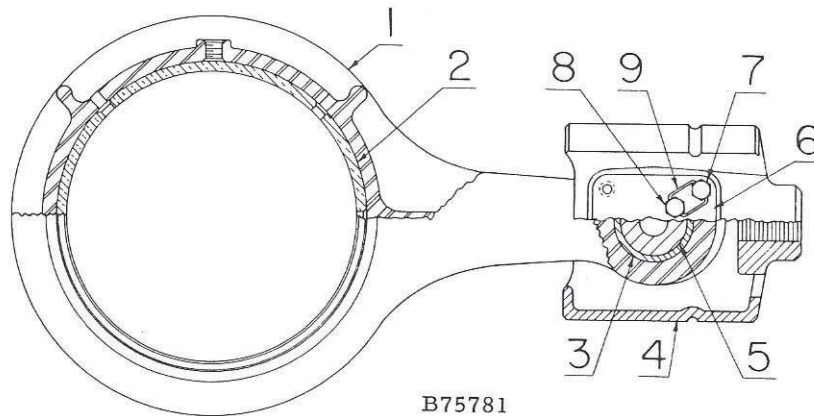
Ref. No.	Name of Part	Qty. Req. Per Pump	All FXD Models
OIL STOP HEAD			Part No.
1	ASM OIL STOP HEAD, Incl. Ref. #2 & 3	2	FXD495
2	STUD, Oil Stop Head	4	79A69
3	NUT, Oil Stop Head	4	50B5
4	GLAND	2	PXD238
5	SCREW-HEX CAP	8	75A39
6	WASHER	8	95A5
7	NUT	8	50B5
8	PACKING, Oil Stop Head	2	60BG26
9	RING-JUNK, Oil Stop Head	2	BC318

Order by Part Number and Description. Reference Numbers for your convenience only.



B75780

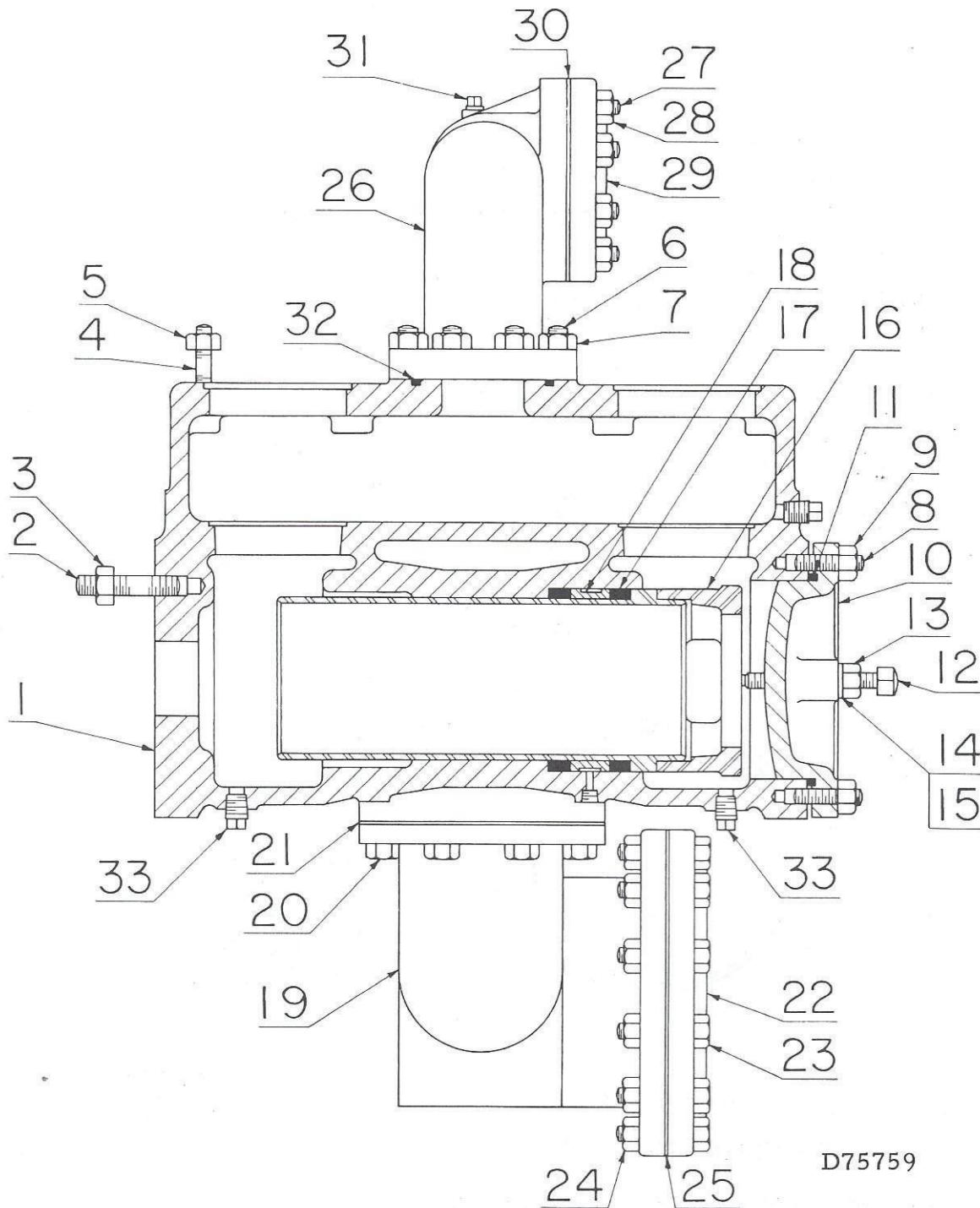
Ref. No.	Name of Part	Qty. Req. Per Pump	All FXD Models
ECCENTRIC SHAFT BEARING			Part No.
1	SLEEVE-SHAFT	2	23AUX18
2	SEAL-OIL	2	60G17
3	BEARING, Eccentric Shaft .	2	12C34
4	SHIM, Bearing Cover Plate (Used Opposite 25C1084 Gasket)	2	77B22
5	SCREW, Bearing Cover Plate	12	75A18
6	PLATE-BEARING COVER . . .	2	FXD366
7	GASKET, Bearing Cover Plate (Used Opposite 77B22 Shim)	1	25C1084
8	FITTING-LUB, Bearing Cover Plate	2	40E5



B75781

N.D.S. Drilling Supply
26041 Newton Circle
Elko, MN 55020
Phone #952-461-3400
Fax # 952-461-3403

Ref. No.	Name of Part	Qty. Req. Per Pump	All FXD Models
CONNECTING ROD & CROSSHEAD			Part No.
1	ASM CONNECTING ROD, Incl. Ref. #2 & 3	2	FXD417
2	BUSHING (Eccentric End)	2	FXD421
3	BUSHING (Crosshead End)	2	FXD229
4	CROSSHEAD	2	FXD175
5	PIN-CROSSHEAD	2	FXD189
6	PLATE-RETAINER	2	FXD281
7	SCREW (1-1/4" lg.), Retainer Plate	4	75B11
8	SCREW (1-1/2" lg.), Retainer Plate	4	75B10
9	WIRE	48"	97A29



D75759

N.D.S. Drilling Supply
 26041 Newton Circle
 Elko, MN 55020
 Phone #952-461-3400
 Fax # 952-461-3403

FOR LIST OF PARTS SEE PAGE 7

Order by Part Number and Description. Reference Numbers for your convenience only.

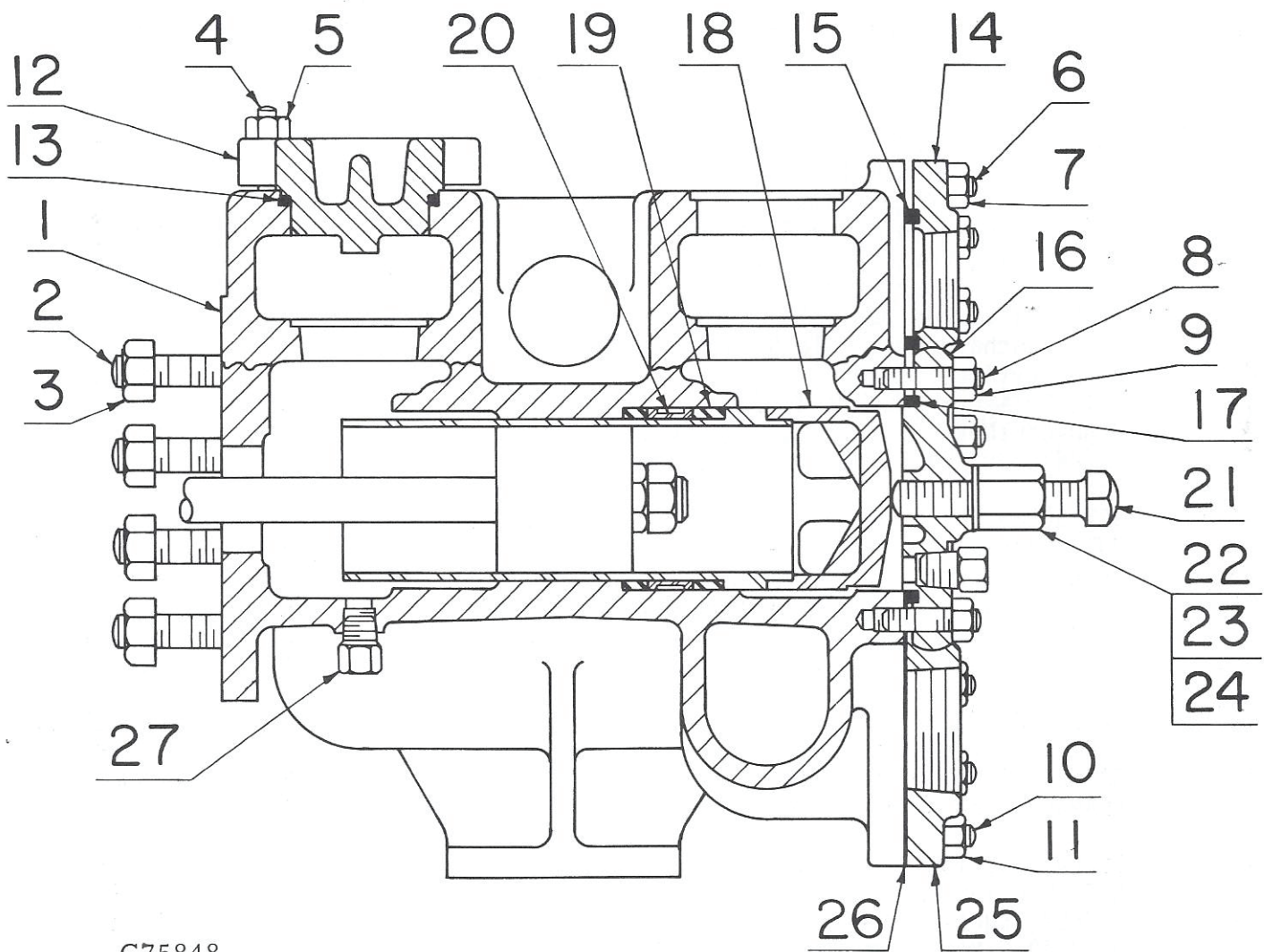
(FYFXD)

Models
 FXDA_B
 FXDE_B
 FXDJ_B
 FXDN_B
 FXDR_B

Ref. No.	Name of Part	Qty. Req. Per Pump	Part No. (Iron)
FLUID CYLINDER			
1	ASM FLUID CYLINDER (RH)*, Incl. Ref. #2 thru 9 .	1	200FYY029B
1	ASM FLUID CYLINDER (LH)*, Incl. Ref. #2 thru 9 .	1	201FYY029B
2	STUD, Cylinder to Frame	12	79A557
3	NUT, Cylinder to Frame Stud	12	50B10
4	STUD, Valve Cover	32	79A92
5	NUT, Valve Cover Stud	32	50B9
6	STUD, Discharge Manifold	16	79L4
7	NUT, Discharge Manifold Stud	16	50B8
8	STUD, Cylinder Head	18	79A183
9	NUT, Cylinder Head Stud	18	50B8
10	HEAD-CYLINDER	2	FY41
11	GASKET, Cylinder Head	2	25G8
12	SET SCREW, Liner Clamp	6	1FY207
13	NUT, Liner Clamp Set Screw	6	50B9
14	PACKING, Liner Clamp Set Screw	6	60BQ3
15	WASHER, Liner Clamp Set Screw	6	95F9
16	CLAMP-LINER	2	F0217
17	SLEEVE, Liner	4	3EN519
18	SPACER, Liner Sleeve	2	EN957
19	MANIFOLD-SUCTION	1	200FYY069
20	SCREW, Suction Manifold to Cylinder	16	75A74
21	GASKET, Suction Manifold to Cylinder	2	25BC105
22	FLANGE, Suction Manifold	1	64CA15
23	SCREW, Suction Manifold Flange	12	75A150
24	NUT, Suction Manifold Flange Screw	12	50B9
25	GASKET, Suction Manifold Flange	1	25C1154
26	DISCHARGE MANIFOLD, Incl. Ref. #27 & 31	1	2F0280
27	STUD, Discharge Manifold Flange	8	79L4
28	NUT, Discharge Manifold Flange Stud	8	50B8
29	FLANGE, Discharge Manifold	1	64DA12
30	GASKET, Discharge Manifold Flange	1	25T34
31	PLUG-SqHd PIPE, Discharge Manifold	1	64AA5
32	GASKET, Discharge Manifold to Cylinder	1	25T34
33	PLUG, Cylinder Priming & Drain	6	64AU5

* For definition of Right Hand and Left Hand side of pump, see ordering instructions on Page 1.

N.D.S. Drilling Supply
 26041 Newton Circle
 Elk, MN 55020
 Phone #952-461-3400
 Fax # 952-461-3403



C75848

FOR LIST OF PARTS SEE PAGE 9

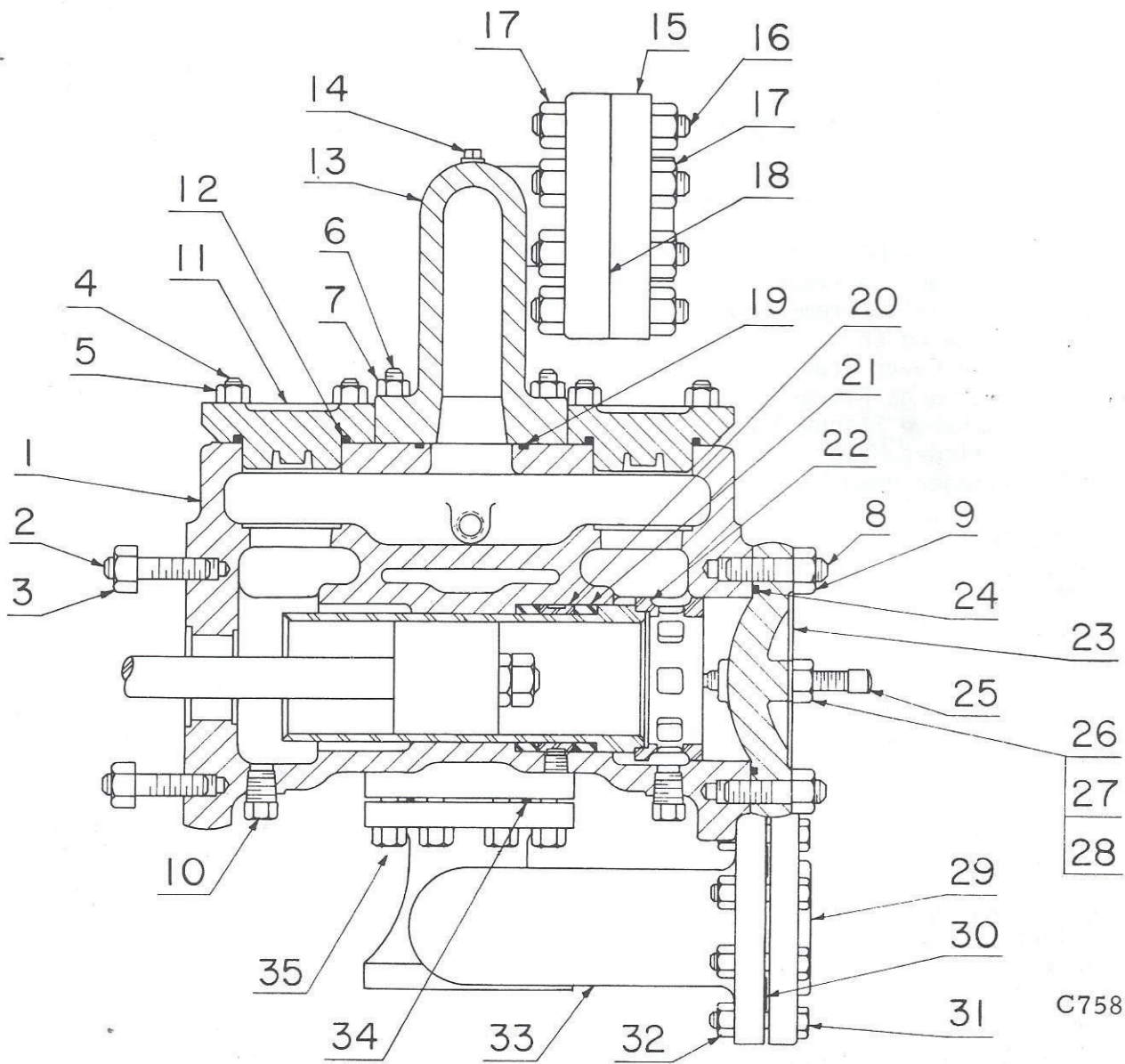
N.D.S. Drilling Supply
 26041 Newton Circle
 Elko, MN 55020
 Phone #952-461-3400
 Fax # 952-461-3403

Order by Part Number and Description. Reference Numbers for your convenience only.

Ref. No.	Name of Part	Qty. Req. Per Pump	(FDFXD)	
			Models FXDC_B FXDG_B FXDL_B FXDP_B FXDT_B	Models FXDB_B FXDF_B FXDK_B FXDS_B
			Part No. (Iron)	Part No. (Iron)
FLUID CYLINDER				
1	ASM FLUID CYLINDER, Incl. Ref. #2 thru 11 .	1	1FD388	6FD29B
2	STUD, Cylinder to Frame	12	79L92	79L92
3	NUT, Cylinder to Frame Stud	12	50B10	50B10
4	STUD, Valve Cover	16	79A559	79A559
5	NUT, Valve Cover Stud	16	50B13	50B13
6	STUD, Discharge Flange	8	79A183	79A183
7	NUT, Discharge Flange Stud	8	50B8	50B8
8	STUD, Cylinder Head	24	79A183	79A183
9	NUT, Cylinder Head Stud	24	50B8	50B8
10	STUD, Suction Flange	8	79A183	79A183
11	NUT, Suction Flange Stud	8	50B8	50B8
12	COVER-VALVE (See Valve Pages)			
13	GASKET, Valve Cover (See Valve Pages)			
14	FLANGE, Discharge	1	64DA5	64DA5
15	GASKET, Discharge Flange	1	25G4	25G4
16	HEAD-CYLINDER	2	5FD41	4FD41
17	GASKET, Cylinder Head	2	25G12	25G43
18	CLAMP-LINER	2	FD217	3FD217
19	SLEEVE-LINER	4	4EF519	25T32
20	SPACER-LINER	2	FC957	FD445
21	SET SCREW, Liner	2	76W3	76W3
22	NUT, Liner Set Screw	2	50B12	50B12
23	WASHER, Liner Set Screw	2	95F12	95F12
24	PACKING, Liner Set Screw	2	60BQ6	60BQ6
25	FLANGE, Suction	1	FD77	FD77
26	GASKET, Suction Flange	1	25C320	25C320
27	PLUG, Cylinder Cleanout	5	64AU5	64AU5
∅	FOOT, Fluid Cylinder	1	FXD20	FXD20
∅	SCREW, Foot to Cylinder	4	75A14	75A14
∅	WASHER, Foot to Cylinder Screw	4	95B9	95B9
∅	NUT, Foot to Cylinder Screw	4	50B9	50B9

∅ Not shown on illustration.

N.D.S. Drilling Supply
 26041 Newton Circle
 Elko, MN 55020
 Phone #952-461-3400
 Fax # 952-461-3403



C75823

FOR LIST OF PARTS SEE PAGE 11

N.D.S. Drilling Supply
 26041 Newton Circle
 Elko, MN 55020
 Phone #952-461-3400
 Fax # 952-461-3403

Order by Part Number and Description. Reference Numbers for your convenience only.

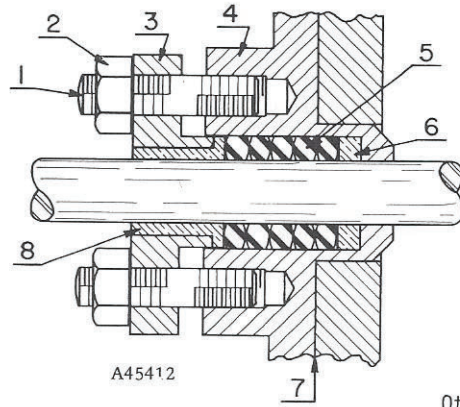
(FCFXD)

Ref. No.	Name of Part	Qty. Req. Per Pump	Models	
			FXDD_B FXDM_B FXDQ_B FXDU_B	Model FXDH_B
			Part No. (Steel)	Part No. (Steel)
FLUID CYLINDER				
1	ASM FLUID CYLINDER (LH),* Incl. Ref. #2 thru 10	1	21FC29LF	23FC29LF
1	ASM FLUID CYLINDER (RH),* Incl. Ref. #2 thru 10	1	21FC29RF	23FC29RF
2	STUD, Cylinder to Frame	12	79L114	79L114
3	NUT, Cylinder to Frame Stud	12	50B10	50B10
4	STUD, Valve Cover	64	79L4	79L4
5	NUT, Valve Cover Stud	64	50B8	50B8
6	STUD, Discharge Manifold	16	79L65	79L65
7	NUT, Discharge Manifold Stud	16	50B8	50B8
8	STUD, Cylinder Head	24	79L80	79L80
9	NUT, Cylinder Head Stud	24	50B10	50B10
10	PLUG, Priming & Drain	6	64AU5	64AU5
11	COVER-VALVE (See Valve Pages)			
12	GASKET, Valve Cover (See Valve Pages)			
13	ASM DISCHARGE MANIFOLD, Incl. Ref. #14 thru 18	1	200FCC071A	200FCC071A
14	PLUG, Discharge Manifold	1	64AA5	64AA5
15	FLANGE, Discharge	1	202FCC073	202FCC073
16	STUD, Discharge Flange	8	79L9	79L9
17	NUT, Discharge Flange	8	50B36	50B36
18	GASKET, Discharge Flange	1	25T15	25T15
19	GASKET, Manifold to Cylinder	2	25T20	25T20
∅	PLUG, SqHd PIPE	2	64AA9	64AA9
20	SPACER-LINER	2	FC957	FC957
21	SLEEVE-LINER	4	4EF519	4EF519
22	CLAMP-LINER	2	FC217	FC217
23	HEAD-CYLINDER	2	3FC41	3FC41
24	GASKET, Cylinder Head	2	25T40	25T40
25	SET SCREW, Liner	6	1FY207	1FY207
26	NUT, Liner Set Screw	6	50B9	50B9
27	WASHER, Liner Set Screw	6	95F9	95F9
28	PACKING, Liner Set Screw	6	60BQ3	60BQ3
	ASM SUCTION MANIFOLD, Incl. Ref. #29 thru 34	1	3EF499	3EF499
29	FLANGE, Suction	1	64DE8	64DE8
30	GASKET, Suction Flange	1	25C320	25C320
31	SCREW, Suction Flange	8	75A214	75A214
32	NUT, Suction Flange Screw	8	50B8	50B8
33	MANIFOLD-SUCTION	1	3EF110	3EF110
34	GASKET, Suction Manifold to Cylinder	2	25G18	25G18
35	SCREW, Suction Manifold	16	75A74	75A74

* For definition of Right Hand and Left Hand side of pump, see ordering instructions on Page 1.

∅ Not shown on illustration.

Order by Part Number and Description. Reference Numbers for your convenience only.



Ref. No.	Name of Part	Qty. Req. Per Pump	(FYFXD) (FD FXD) Models		
			FXDA_B	FXDG_B	FXDP_B
			FXDB_B	FXDJ_B	FXDR_B
			FXDC_B	FXDK_B	FXDS_B
			FXDE_B	FXDL_B	FXDT_B
			FXDF_B	FXDN_B	

STUFFING BOX
FOR IRON FLUID ENDS

Ref. No.	Name of Part	Qty. Req. Per Pump	Part No.
1	STUD, Stuffing Box	4	79A183
2	NUT, Stuffing Box Stud	4	50B8
3	GLAND, Stuffing Box	2	FD21
4	ASM STUFFING BOX, Incl. Ref. #1 & 2	2	2007956
5	PACKING, Braided Asbestos (Oil & Water Serv)*	2	60BG13
5	PACKING, Oil Resistant Molded Convex (Standard Slush Service)*	2	60BH2
5	PACKING, Molded Rubber & Duck (Optional Slush Service)*	2	60DA415
6	RING-JUNK, Stuffing Box	2	BC317
7	GASKET, Stuffing Box	2	25C1737
8	BUSHING-GLAND	2	1FD152

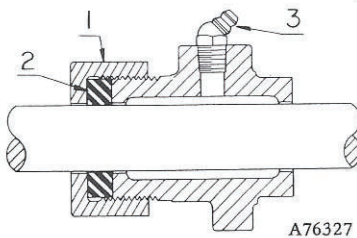
(FCFXD)
Models

Ref. No.	Name of Part	Qty. Req. Per Pump	FXDD_B	FXDQ_B
			FXDH_B	FXDU_B
			FXDM_B	

STUFFING BOX
FOR STEEL FLUID ENDS

Ref. No.	Name of Part	Qty. Req. Per Pump	Part No.
1	STUD, Stuffing Box Gland	4	79L11
2	NUT, Stuffing Box Gland Stud	4	50B9
3	GLAND, Stuffing Box	2	1FC21
4	ASM STUFFING BOX, Incl. Ref. #1 & 2	2	16FC14B
5	PACKING, Braided Asbestos (Oil & Water Serv)*	2	60BG13
5	PACKING, Oil Resistant Molded Convex (Standard Slush Service)*	2	60BH2
5	PACKING, Molded Rubber & Duck (Optional Slush Service)*	2	60DA415
6	RING-JUNK	2	BC317
7	GASKET, Stuffing Box	2	25AL35
8	BUSHING-GLAND	2	1FD152

* Selective for Column 9



Ref. No.	Name of Part	Qty. Req. Per Pump	All FXD Models
	STUFFING BOX GLAND (OPTIONAL EQPT.)		Part No.
	ASM GLAND, Incl. Following 4 Items	2	200FXX008A
1	GLAND	2	200FXX008
2	PACKING-RING	2	60DD75
Ø	NUT	2	200FXX086
3	FITTING-LUBE	2	40E10
	Ø Not Shown on Illustration.		

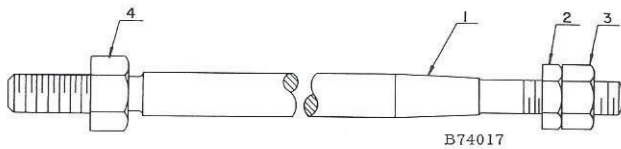
Order by Part Number and Description. Reference Numbers for your convenience only.

CYLINDER LINERS *
TWO (2) REQUIRED PER PUMP

Size	(FYFXD) Models		Size	(FCFXD) Models	
	FXDA_B	FXDN_B		FXDD_B	FXDQ_B
	FXDE_B	FXDR_B		FXDH_B	FXDU_B
	Hardened			Hardened	
	Steel	Bronze		Steel	Bronze
	Part No.	Part No.		Part No.	Part No.
7-1/2"	FY45675	FY6275BB	5"	1EF45650	33EF64
7-1/4"	FZ45672	FZ6272BB	4-1/2"	1EF45645	34EF64
7"	FZ45670	FZ6270BB	4"	1EF45640	35EF64
6-3/4"	FZ45667	FZ6267BB	3-1/2"	1EF45635	36EF64
6-1/2"	FZ45665	FZ6265BB	3"	1EF45630	37EF64
6"	FZ45660	FZ6260BB	2-1/2"	1EF45625	38EF64
5-1/2"	FZ45655	FZ6255BB			
5"	FZ45650	FZ6250BB			

Size	(FD FXD) Models			(FD FXD) Models	
	FXDC_B	FXDP_B	Bronze	FXDB_B	FXDK_B
	FXDG_B	FXDT_B		FXDF_B	FXDS_B
	Stainless Steel	Hardened Steel		Hardened Steel	
	Part No.	Part No.	Part No.	Part No.	
5-1/2"	None	None	None	FD45655	
5"	16FD64	FD45650	FD64	1FD45650	
4-1/2"	20FD64	FD45645	3FD64	2FD45645	
4"	22FD64	FD45640	6FD64	1FD45640	
3-1/2"	24FD64	FD45635	9FD64	200FDD456	
3"	26FD64	FD45630	12FD64	None	
2-1/2"	28FD64	FD45625	15FD64	None	

* Selective for Column 7

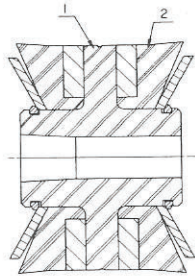


PISTON ROD & NUTS **
(API NO. 3 TAPER)

Ref. No.	Description	Qty. Req. Per Pump	(FD FXD) (FCFXD) Models	
			FXDB_B	FXDK_B
			FXDL_B	FXDM_B
			FXDP_B	FXDQ_B
			FXDS_B	FXDT_B
			FXDU_B	
			Part No.	Part No.
1	HARDENED STEEL PISTON ROD, Incl. Ref. #2 & 3	2	FY183	5FD183
2	NUT (Thin)	2	None	None
3	NUT (Full)	2	50V7	50V7
4	NUT, Crosshead	2	50T137	50T137
1	BRONZE PISTON ROD, Incl. Ref. #2 & 3	2	2FY183	7FD183
2	NUT (Thin)	2	50T235	50T235
3	NUT (Full)	2	50T236	50T236
4	NUT, Crosshead	2	50T137	50T137
1	STAINLESS STEEL PISTON ROD, Incl. Ref. #2 & 3	2	4FY183	9FD183
2	NUT (Thin)	2	50T156	50T156
3	NUT (Full)	2	50T157	50T157
4	NUT, Crosshead	2	50T137	50T137
1	CHROME PLATED PISTON ROD, Incl. Ref. #2 & 3	2	5FY183	10FD183
2	NUT (Thin)	2	None	None
3	NUT (Full)	2	50V7	50V7
4	NUT, Crosshead	2	50T137	50T137

** Selective for Column 9

Order by Part Number and Description. Reference Numbers for your convenience only.



STEEL INSERT-TYPE PISTON *
STANDARD FOR
SLUSH, GROUT & CEMENT SERVICE
(API NO. 3 TAPER)

C76948

(FYFXD)
Models FXDA_B & FXDE_B

(FYFXD) (FDFXD)
Models
FXDA_B FXDB_B
FXDE_B FXDF_B

Ref. No.	Name of Part	Qty. Req. Per Pump	7-1/2"	7-1/4"	7"	6-3/4"	6-1/2"	6"	5-1/2"
			Part No.	Part No.	Part No.	Part No.	Part No.	Part No.	Part No.
1	ASM PISTON, Inc. Ref. #2	2	212TBB045A	211TBB045A	210TBB045A	209TBB045A	208TBB045A	206TBB045A	204TBB045A
2	INSERT GROUP, Incl. Retainer Plates & Rings	2	TBB76021	TBB76020	TBB76019	TBB76018	TBB76017	TBB76015	TBB76013

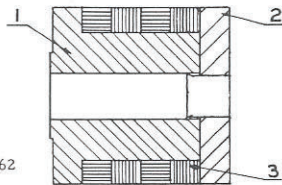
(FYFXD)
(FDFXD)
(FCFXD)
Models

FXDA_B FXDE_B
FXDB_B FXDC_B
FXDF_B FXDG_B
FXDD_B FXDH_B

(FDFXD) (FCFXD)
Models
FXDB_B FXDD_B
FXDC_B FXDH_B
FXDF_B
FXDG_B

(FDFXD) (FCFXD)
Models
FXDC_B FXDD_B
FXDG_B FXDH_B

Ref. No.	Name of Part	Qty. Req. Per Pump	5"	4-1/2"	4"	3-1/2"	3"
			Part No.	Part No.	Part No.	Part No.	Part No.
1	ASM PISTON, Inc. Ref. #2	2	202TBB045A	200TBB045A	225TBA045A	223TBA045A	221TBA045A
2	INSERT GROUP, Incl. Retainer Plates & Rings	2	TBB76011	TBB76009	TBA75998	TBA75996	TBA75994



A44562

FOLLOWER TYPE FLUID PISTONS *
STANDARD FOR WATER AND GENERAL SERVICE
(API NO. 3 TAPER)

(FYFXD)
Models FXDN_B & FXDR_B

(FYFXD) (FDFXD)
Models
FXDN_B FXDS_B
FXDR_B

Ref. No.	Name of Part	Qty. Req. Per Pump	7-1/2"	7-1/4"	7"	6-3/4"	6-1/2"	6"	5-1/2"
			Part No.	Part No.	Part No.	Part No.	Part No.	Part No.	Part No.
1	BODY-PISTON (Iron)	2	FY45	17F045	19F045	21F045	23F045	27F045	31F045
2	FOLLOWER-PISTON (Iron)	2	FY46	F046	18F046	3F046	2F046	4F046	6F046
1	BODY-PISTON (Bronze)	2	1FY45	18F045	20F045	22F045	24F045	28F045	32F045
2	FOLLOWER-PISTON (Bronze)	2	1FY46	1F046	19F046	8F046	9F046	10F046	12F046
3	PACKING, Regular Cure	See ()	60D47(12)	2009041(12)	60D52(12)	2009042(16)	60D9(12)	60D8(12)	60D7(12)
3	PACKING, Rock Hard	See ()	60Y47(12)	60Y2(12)	60Y52(12)	60Y3(16)	60Y9(12)	60Y8(12)	60Y7(12)

(FYFXD)
(FDFXD)
(FCFXD)
Models

FXDN_B FXDR_B
FXDP_B FXDS_B
FXDT_B FXDU_B
FXDQ_B

(FDFXD) (FCFXD)
Models
FXDP_B FXDQ_B
FXDS_B FXDU_B
FXDT_B

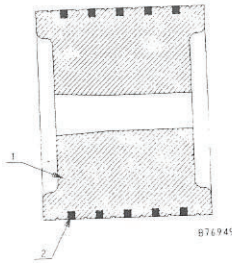
(FDFXD) (FCFXD)
Models
FXDP_B FXDQ_B
FXDT_B FXDU_B

Ref. No.	Name of Part	Qty. Req. Per Pump	5"	4-1/2"	4"	3-1/2"	3"	2-1/2"
			Part No.	Part No.	Part No.	Part No.	Part No.	Part No.
1	BODY-PISTON (Iron)	2	35F045	37F045	FD45	1FD45	2FD45	3FD45
2	FOLLOWER-PISTON (Iron)	2	7F046	16F046	FD46	1FD46	2FD46	3FD46
1	BODY-PISTON (Bronze)	2	36F045	38F045	4FD45	5FD45	6FD45	7FD45
2	FOLLOWER-PISTON (Bronze)	2	13F046	22F046	4FD46	5FD46	6FD46	7FD46
3	PACKING, Regular Cure	See ()	60D6(12)	60D22(12)	60D17(14)	60D25(14)	60D11(12)	60D13(10)
3	PACKING, Rock Hard	See ()	60Y6(12)	60Y22(12)	60Y17(14)	60Y25(14)	60Y11(12)	60Y13(10)

* Selective for Column 8

N.D.S. Drilling Supply
26041 Newton Circle
Elko, MN 55020
Phone #952-461-3400
Fax # 952-461-3403

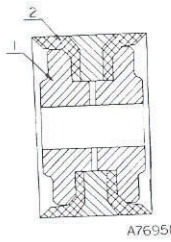
Order by Part Number and Description. Reference Numbers for your convenience only.



IRON SOLID-TYPE PISTON W/CAST IRON RINGS *
STANDARD FOR OIL SERVICE
(API NO. 3 TAPER)

Ref. No.	Name of Part	Qty. Req. Per Pump	Models					Models	
			7-1/2"	7-1/4"	7"	6-3/4"	6-1/2"	6"	5-1/2"
1	PISTON	2	Part No. FY350	Part No. 1FY350	Part No. 2FY350	Part No. 3FY350	Part No. 4FY350	Part No. 6FY350	Part No. 8FY350
2	RING-PISTON	See ()	65A43(10)	65A92(10)	65A39(10)	65A101(10)	65A17(10)	65A8(10)	65A6(10)

Ref. No.	Name of Part	Qty. Req. Per Pump	Models			Models		Models	
			5"	4-1/2"	4"	3-1/2"	3"	2-1/2"	
1	PISTON	2	Part No. 9FY350	Part No. FX0350	Part No. FD350	Part No. 1FD350	Part No. 2FD350	Part No. 3FD350	
2	RING-PISTON	See ()	65A3(10)	65A47(8)	65A33(8)	65A9(8)	65A14(8)	65A44(8)	



CUP-TYPE PISTONS *
IRON & STEEL FOR OIL & GENERAL SERVICE
BRONZE FOR WATER SERVICE
API NO. 3 TAPER (OPTIONAL)

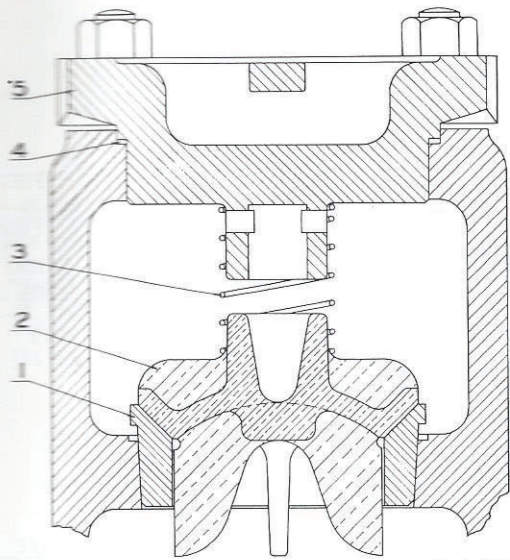
Ref. No.	Name of Part	Qty. Req. Per Pump	Models					Models	
			7-1/2"	7-1/4"	7"	6-3/4"	6-1/2"	6"	5-1/2"
1	PISTON(IRON) Incl. Ref. #2	2	Part No. P3APIL750	Part No. P3APIL725	Part No. P3APIL700	Part No. P3APIL675	Part No. P3APIL650	Part No. P3APIL600	Part No. P3APIL550
1	PISTON(STEEL) Incl. Ref. #2	2	Part No. P3APIL750S	Part No. P3APIL725S	Part No. P3APIL700S	Part No. P3APIL675S	Part No. P3APIL650S	Part No. P3APIL600S	Part No. P3APIL550S
1	PISTON(BRONZE) Incl. Ref. #2	2	Part No. P3APIL750B	Part No. P3APIL725B	Part No. P3APIL700B	Part No. P3APIL675B	Part No. P3APIL650B	Part No. P3APIL600B	Part No. P3APIL550B
2	CUP	4	60BB25	60BB24	60BB23	60BB22	60BB21	60BB19	60BB17

Ref. No.	Name of Part	Qty. Req. Per Pump	Models			Models		Models	
			5"	4-1/2"	4"	3-1/2"	3"		
1	PISTON(IRON) Incl. Ref. #2	2	Part No. P3APIL500	Part No. P3APIL450	Part No. P3APIL400	Part No. P3APIL350	Part No. P3APIL300	Part No. P3APIL300B	
1	PISTON(STEEL) Incl. Ref. #2	2	Part No. P3APIL500S	Part No. P3APIL450S	Part No. P3APIL400S	Part No. P3APIL350S	Part No. P3APIL300S	Part No. P3APIL300B	
1	PISTON(BRONZE) Incl. Ref. #2	2	Part No. P3APIL500B	Part No. P3APIL450B	Part No. P3APIL400B	Part No. P3APIL350B	Part No. P3APIL300B	Part No. P3APIL300B	
2	CUP	4	60BB15	60BB13	60BB11	60BB9	60BB7	60BB7	

* Selective for Column 8

N.D.S. Drilling Supply
26041 Newton Circle
Elko, MN 55020
Phone #952-461-3400
Fax # 952-461-3403

Order by Part Number and Description. Reference Numbers for your convenience only.



C38027

Ref. No.	Name of Part	Qty. Req. Per Pump	(FYFXD) Model FXDN_B
BRONZE WING GUIDED VALVE * WITHOUT INSERT WATER SERVICE (STD)			
			Part No.
1	SEAT-VALVE	8	7EN39
2	VALVE-FLUID	8	2EN206
3	SPRING (Brass)	8	78D83
4	GASKET, Valve Cover.	8	25G32
5	COVER-VALVE.	8	1FY147

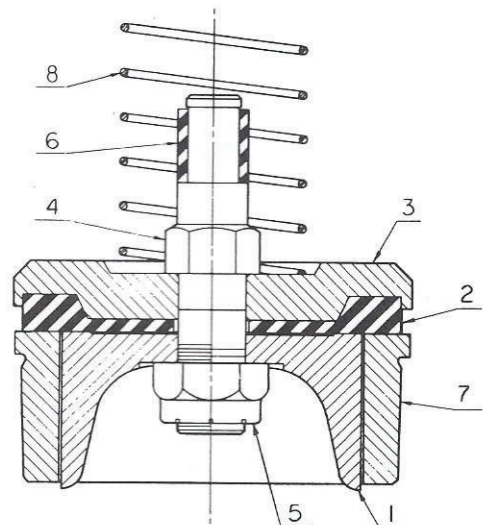
For above valve, use one (1) 201FYY219A
ASM Valve Seat Puller as shown on Page 22.

N.D.S. Drilling Supply
26041 Newton Circle
Elko, MN 55020
Phone #952-461-3400
Fax # 952-461-3403

Ref. No.	Name of Part	Qty. Req. Per Pump	(FYFXD) Models FXDA_B FXDE_B
----------	--------------	--------------------	------------------------------

**HARDENED STEEL
WING GUIDED GRAVEL VALVE *
WITH RUBBER INSERT
SLUSH, GROUT & CEMENT SERVICE** Part No.

ASM VALVE less Seat, Incl.			
	Ref. #1 thru 6	8	200FYY482A
1	VALVE-FLUID	8	200FYY482
2	INSERT, Rubber.	8	200FYY106
3	WASHER-VALVE.	8	200FYY279
4	BOLT-VALVE.	8	200FYY012
5	LOCKNUT	8	50V6
6	BUSHING	8	2013547
7	SEAT-VALVE.	8	200FYY039
8	SPRING.	8	78A169
Ø	GASKET, Valve Cover	8	25G32
Ø	COVER-VALVE	8	1FY147



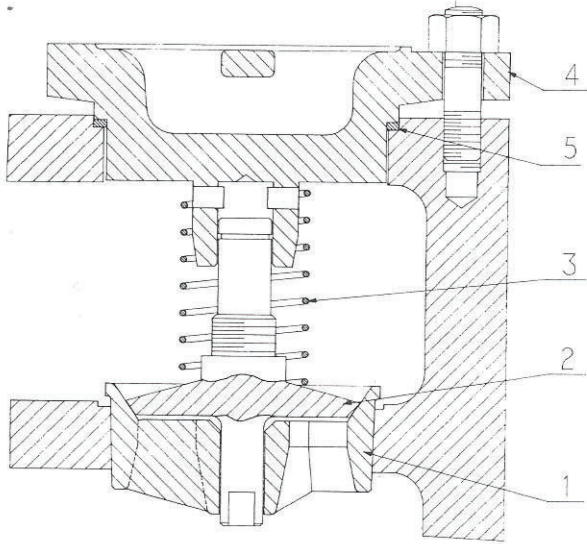
B76392

For above valve, use one (1) 202FYY219A
ASM Valve Seat Puller as shown on Page 22.

Ø Not shown on illustration.
* Selective for Column 10.

Order by Part Number and Description. Reference Numbers for your convenience only.

N.D.S. Drilling Supply
 26041 Newton Circle
 Elko, MN 55020
 Phone #952-461-3400
 Fax # 952-461-3403



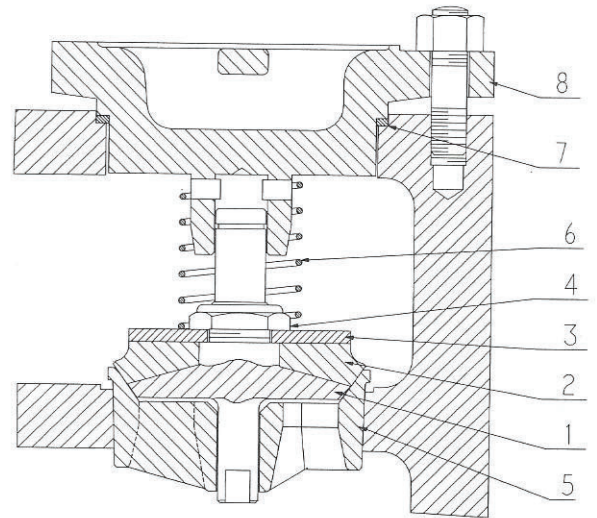
C77002

Ref. No.	Name of Part	Qty. Req. Per Pump	(FYFXD) Models FXDJ_B FXDR_B
STEEL FITTED-CENTER GUIDED VALVE * WITHOUT INSERT OIL & GENERAL SERVICE (STD)			
			Part No.
1	SEAT-VALVE	8	201FYY039
2	VALVE-FLUID.	8	202PZL482
3	SPRING	8	78A169
4	COVER-VALVE.	8	FY147
5	GASKET	8	25U32

Ref. No.	Name of Part	Qty. Req. Per Pump	(FYFXD) Models FXDA_B FXDE_B
----------	--------------	--------------------	------------------------------

**STEEL FITTED-CENTER GUIDED VALVE *
WITH CARBOXYLATED RUBBER INSERT
SLUSH, GROUT & CEMENT SERVICE**

Ref. No.	Name of Part	Qty. Req. Per Pump	Part No.
ASM VALVE, Incl.			
	Ref. #1 Thru 4	8	202PZL482B
1	VALVE-FLUID	8	202PZL482
2	INSERT.	8	202PZL106
3	WASHER.	8	201PZL279
4	NUT	8	50V27
5	SEAT-VALVE.	8	201FYY039
6	SPRING.	8	78A139
7	GASKET.	8	25G32
8	COVER-VALVE	8	FY147

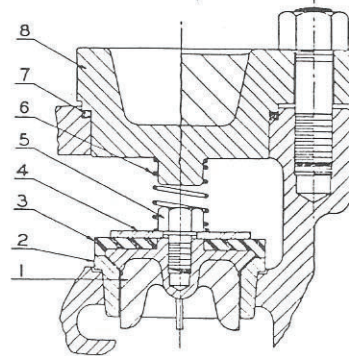


C77001

For above valves, use one (1) 100E9 ASM Valve Seat Puller as shown on Page 24.

* Selective for Column 10

Order by Part Number and Description. Reference Numbers for your convenience only.



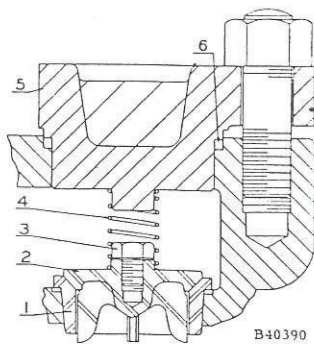
Ref. No.	Name of Part	Qty. Req. Per Pump	(FCFXD) Model FXDQ_B	(FDFXD) Models FXDB_B FXDC_B FXDF_B FXDG_B	(FCFXD) Models FXDD_B FXDH_B
----------	--------------	--------------------	----------------------	---	---------------------------------

**WING GUIDED VALVE **
WITH RUBBER INSERT
WATER, SLUSH, GROUT & CEMENT SERVICE**

Ref. No.	Name of Part	Qty. Req. Per Pump	Part No. (Bronze)	Part No. (Hardened Steel)	Part No. (Hardened Steel)
1	SEAT VALVE	8	6PA39	11FG39	4PA39
	ASM FLUID VALVE, Incl. Ref. #2 Thru 5	8	9EF206A	1FG928	11EF206A
2	VALVE-FLUID.	8	9EF206	17FG206	11EF206
3	INSERT	8	5EF452	1FG452*	5EF452
4	WASHER	8	95G35	95D49	95D53
5	SCREW.	8	7FF156	5FF156	5FF156
6	SPRING	8	78D88	78A171	78A298
7	GASKET, Valve Cover.	8	25AL36	25G18	25AL36
8	COVER-VALVE.	8	9FC147	FD147	9FC147

For Models FXDB, C, F & G use one (1) 1AUX545 ASM Valve Seat Puller as shown on Page 23.
For Models FXDD, H & Q use one (1) 2015080 ASM Valve Seat Puller as shown on Page 23.

* Also available as 7FG452 Polyurethane Insert.



Ref. No.	Name of Part	Qty. Req. Per Pump	(FCFXD) Model FXDQ_B	(FDFXD) Models FXDK_B FXDL_B FXDS_B FXDT_B	(FCFXD) Models FXDM_B FXDU_B
----------	--------------	--------------------	----------------------	---	---------------------------------

**WING GUIDED VALVE **
WITHOUT INSERT
OIL OR WATER SERVICE**

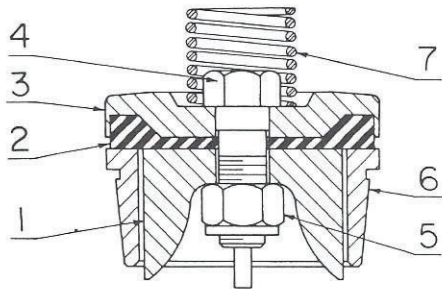
Ref. No.	Name of Part	Qty. Req. Per Pump	Part No. (Bronze)	Part No. (Hardened Steel)	Part No. (Hardened Steel)
1	SEAT VALVE	8	6PA39	11FG39	4PA39
2	ASM FLUID VALVE, Incl. Ref. #3 & 4	8	9EF206B	17FG206C	11EF206B
3	SCREW.	8	7FF156	5FF156	5FF156
4	SPRING	8	78A299	78A134	78A299
5	COVER-VALVE.	8	9FC147	FD147	9FC147
6	GASKET	8	25AL36	25AV18	25AL36
Ø	WASHER	8	95G38	95D136	95D136

For Models FXDK, L, S & T use one (1) 1AUX545 ASM Valve Seat Puller as shown on Page 23.
For Models FXDM, Q & U use one (1) 2015080 ASM Valve Seat Puller as shown on Page 23.

Ø Not shown on illustration.

** Selective for Column 10.

Order by Part Number and Description. Reference Numbers for your convenience only.



B75688

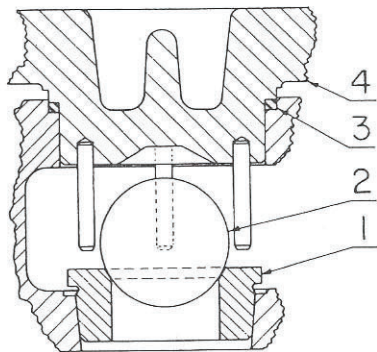
Ref. No.	Name of Part	Qty. Req. Per Pump	(FDFXD)
			Models
			FXDB_B
			FXDC_B
			FXDF_B
			FXDG_B

**HARDENED STEEL
WING GUIDED GRAVEL VALVE *
WITH RUBBER INSERT
SLUSH, GROUT & CEMENT SERVICE**

Part No.

ASM VALVE less Seat, Incl.			
	Ref. #1 Thru 5.	8	200FGG482A
1	VALVE.	8	200FGG482
2	INSERT	8	200FGG106
3	WASHER	8	200FGG279
4	BOLT	8	200FGG655
5	NUT.	8	50AF8
6	SEAT	8	200FGG039
7	SPRING (Steel)	8	78A171
7	SPRING (Bronze)	8	78D22
Ø	COVER-VALVE.	8	FD147
Ø	GASKET, Valve Cover.	8	25G18

For above valve use one (1) 1AUX545 ASM Valve Seat Puller as shown on Page 23.



B75760

N.D.S. Drilling Supply
26041 Newton Circle
Elko, MN 55020
Phone #952-461-3400
Fax # 952-461-3403

Ref. No.	Name of Part	Qty. Req. Per Pump	(FDFXD)	
			Models FXDS_B	Models FXDT_B

**DELTRIN BALL VALVE *
GENERAL SERVICE
(Optional)**

Part No. (Steel) Part No. (Stainless Steel)

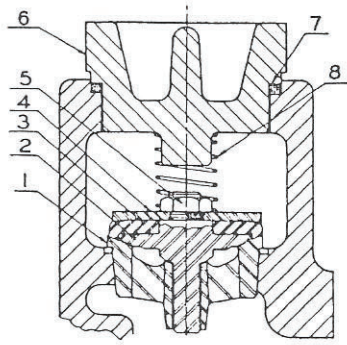
1	SEAT-VALVE	8	200FDD039	201FDD039
2	VALVE-BALL, Delrin	8	200FDD481	200FDD481
3	GASKET, Valve Cover.	8	25G18	25G18
4	COVER-VALVE.	8	200FDD147A	200FDD147A

For above Delrin Ball Valve use one (1) FDD67544 Valve Puller Group as shown on Page 23.

Ø Not shown on illustration.

* Selective for Column 10

Order by Part Number and Description. Reference Numbers for your convenience only.



B37359

N.D.S. Drilling Supply
 26041 Newton Circle
 Elko, MN 55020
 Phone #952-461-3400
 Fax # 952-461-3403

(FCFXD)	(DFDXD)	(FCFXD)
Models	Models	Models
FXDD_B	FXDB_B	FXDD_B
FXDH_B	FXDC_B	FXDH_B
	FXDF_B	
	FXDG_B	

Ref.
No.

Name of Part

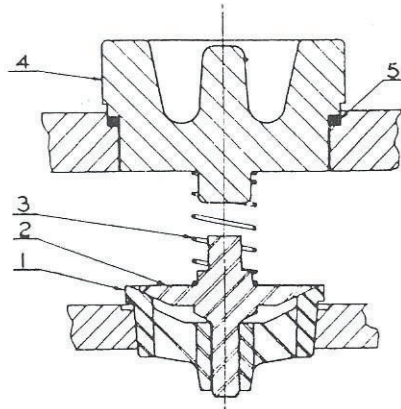
Qty.
Req.
Per
Pump

**HARDENED STEEL
 CENTER GUIDED VALVE **
 WITH RUBBER INSERT
 SLUSH, GROUT & CEMENT SERVICE**

Part No. Part No. Part No.

1	SEAT-VALVE	8	PA451	1FG451	PA451
	ASM FLUID VALVE, Incl. Ref. #2 Thru 5.	8	EF482E*	1FG908	EF482G
2	VALVE-FLUID	8	EF482	3FG482	EF482
3	INSERT	8	6EF452	5FG452	7EF452
4	WASHER	8	3EF279	1FG279	3EF279
5	NUT	8	50V50	50G8	50V50
6	COVER-VALVE	8	9FC147	FD147	9FC147
7	GASKET, Valve Cover	8	25AL36	25G18	25AL36
8	SPRING	8	78A298	78A171	78A298

* With Polyurethane Insert.



B37360

Ref.
No.

Name of Part

Qty.
Req.
Per
Pump

(DFDXD)	(FCFXD)
Models	Models
FXDK_B	FXDM_B
FXDL_B	FXDU_B
FXDS_B	
FXDT_B	

**HARDENED STEEL
 CENTER GUIDED VALVE **
 WITHOUT INSERT
 OIL OR GENERAL SERVICE**

Part No. Part No.

1	SEAT-VALVE	8	1FG451	PA451
2	VALVE-FLUID	8	3FG482	EF482
3	SPRING	8	78A134	78A299
4	COVER-VALVE	8	FD147	9FC147
5	GASKET, Valve Cover	8	25AV18	25AL36

For above valves use one (1) 3AUX545 ASM Valve Seat Puller as shown on Page 23.

** Selective for Column 10.