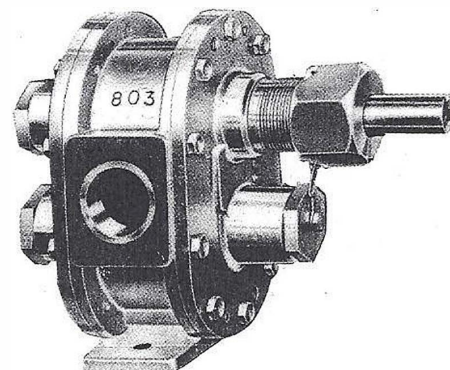
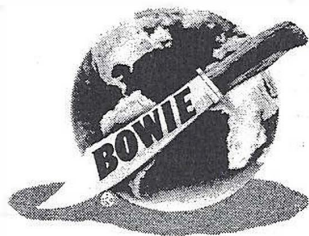


# " 9100 " Series

## BUSHING TYPE

## PARTS LIST



### 1- 1/4-INCH BUSHING TYPE PUMP

PART NUMBER	DESCRIPTION		PART NUMBER	DESCRIPTION
9100	Bronze Bowie Pump w/Hy Car Rubber Gears and Stainless Steel Shafts		9100/B	Bronze Bowie Pump w/Hy Car Gears and Stainless Steel Shafts and Bypass

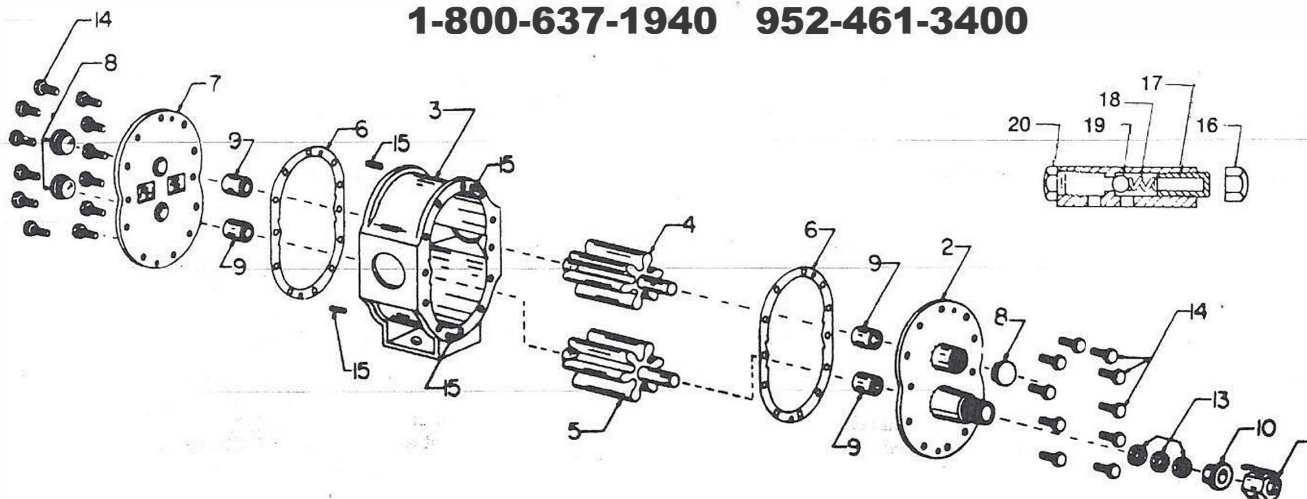
Available options: extended drive shaft

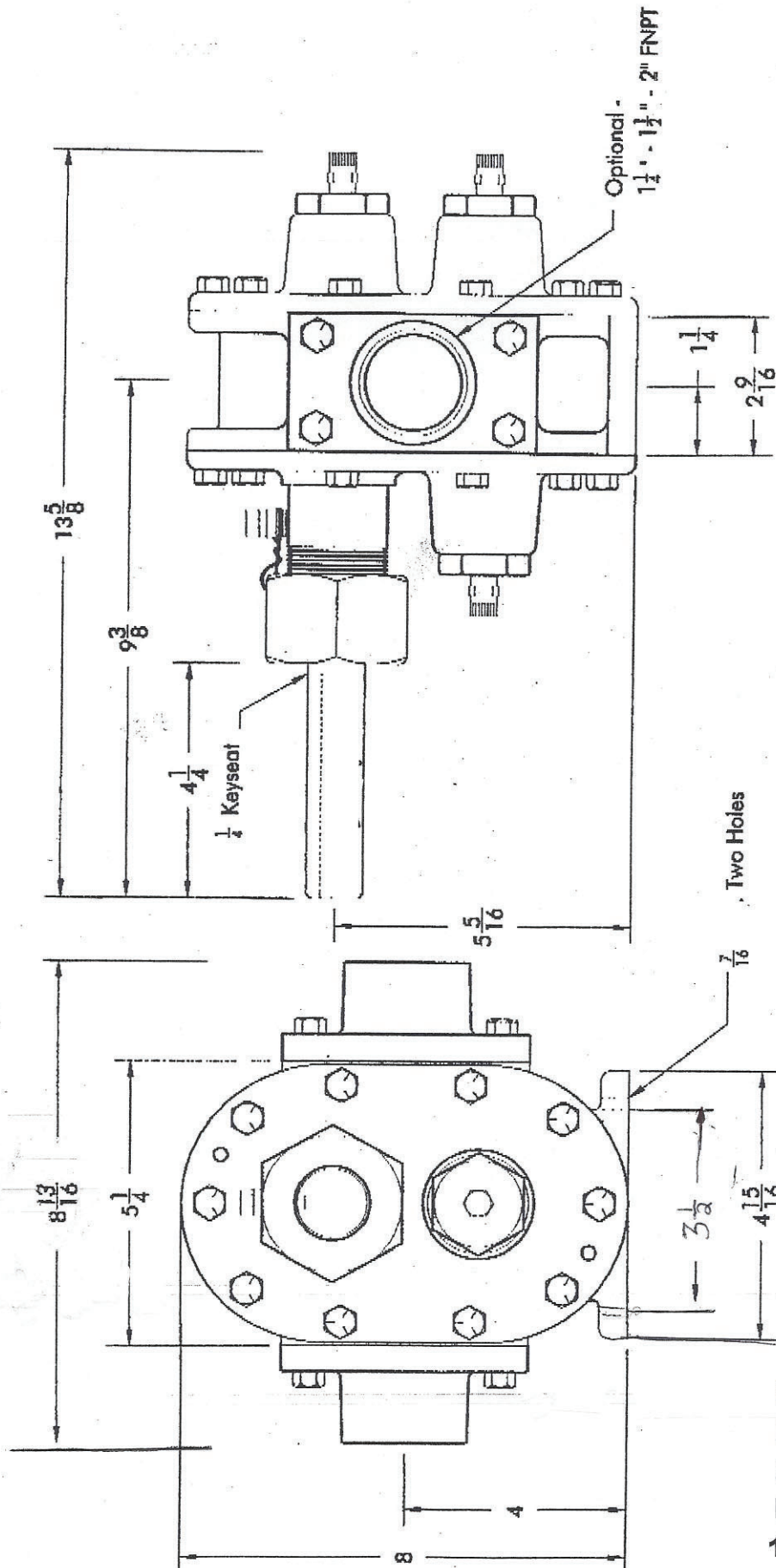
#### PARTS

REF NO	PART NUMBER	DESCRIPTION	NO REQ		REF NO	PART NUMBER	DESCRIPTION	NO REQ
1	9101	Packing Nut	1		8	108	End Plugs	3
2	9102	Front Plate	1		9	109B	Bronze Bushings	4
3	9103	Center Case	1		9	109T	Glass Filled Teflon Bushing	4
4	104	Gear (Hy Car) with Stainless Steel Idler Shaft	1		10	110	Packing Gland Insert	1
4	104B	Gear (Brass) With Stainless Steel Idler Shaft	1		13	113	Graphite Asbestos Packing	3
4	104SSA	Stainless Steel Idler Shaft Only	1		13	113T	Teflon Packing	3
5	105	Gear (Hy Car) With Stainless Steel Drive Shaft	1		14	114	End Plate Bolts	20
5	105B	Gear (Brass) With Stainless Steel Drive Shaft	1		15	115	Taper Pins	4
5	105SSA	Stainless Steel Drive Shaft Only	1		16	116	Nut	1
6	106	Pump Gaskets	7		17	123	Adjusting Bypass Screw	1
7	9107	Back Plate	1		18	124	Bypass Spring	1
7	9107A	Bypass Back Plate Complete			19	125	Bypass Ball	1
					20	126	Bypass Cap	1

NOTE: Four digit part numbers beginning with #9 denotes parts for 91 series Pump only.  
 Four digit part numbers beginning with #8 denotes parts for 81 series Pump only.  
 Three digit part numbers represent parts that are interchangeable between the 81 & 91 series pumps.

**NDS Drilling Supply, Inc.**  
**26041 Newton Circle**  
**Elko New Market, MN 55020**  
**1-800-637-1940 952-461-3400**





**BOWIE**  
INDUSTRIES, INC

Tolerances (except as noted)

Decimal .XXX  $\pm .003$  Fractional  $\pm 1/16$   
 Concentricity .001 Angular  $\pm 1^\circ$

## 8100/9100 Series Upper Drive

Size	Part No.	Material	Scale	Sheet
A	9100 SS	81-91-U	1:3	1
Date	10/28/99	Flex.	0	

**Distributor Contact:**  
**NDS Drilling Supply, Inc.**  
 26041 Newton Circle  
 Elko New Market, MN 55020  
 1-800-637-1940 952-461-3400

**SERIES 8100 • 9100 SIZE: 1¼"-1½"**

BOWIE PUMP RATINGS FOR 1¼" PUMP SIZES FLUID KEROSENE/H <sub>2</sub> O				
Pump RPM	Temperature of Fluid °F	Discharge- Pressure	Capacity GPM	Brake Horsepower
520	93.5	0	32.6	1.15
520	93.5	20	31.8	1.75
520	93.5	40	31.3	2.00
520	93.5	60	30.5	2.90
520	93.5	80	30.6	3.54
520	101.5	100	29.7	4.19
780	101.5	0	48.0	2.12
780	101.5	20	46.9	2.93
780	101.5	40	46.5	3.76
780	108.0	60	46.2	4.98
780	108.0	80	46.2	6.13
780	120.0	100	45.3	6.87

**NDS Drilling Supply, Inc.**  
**26041 Newton Circle**  
**Elko New Market, MN 55020**  
**1-800-637-1940 952-461-3400**