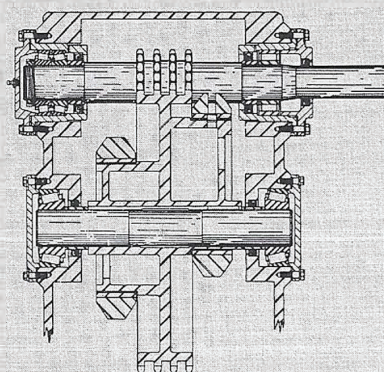
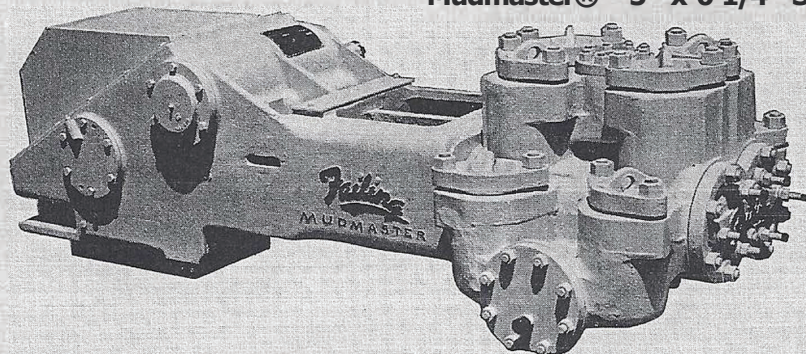




# GEORGE E. FAILING CO.

## MODEL FM-45

### Mudmaster® 5" x 6-1/4" Slush Pump



The **Failing** Model FM-45 is a duplex reciprocating type power slush pump designed for maximum volume without sacrifice of working pressure and compactness.

Its power end is a rugged, one-piece unit with integral supports for jackshaft and eccentric shaft bearings. The cover is removable for easy access to the power end mechanism. Main sprocket and eccentrics are cast in one piece and keyed to a straight alloy steel shaft. These shafts are roller bearing mounted and power is transmitted by a high speed quadruple roller chain.

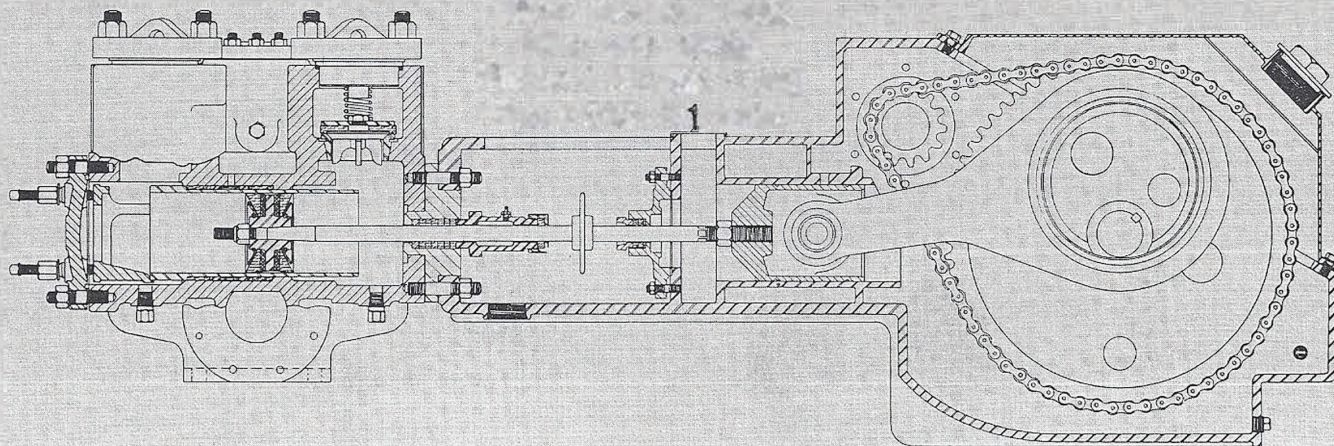
Connecting rods are one-piece steel with renewable eccentric bushings and bronze crosshead bushings. The one-piece skirt type cast alloy crosshead is reinforced at all

load areas.

Fluid end of the FM-45 is a one-piece casting with conventional pot type valves. Steel studs secure valve covers, flanges and plates to the fluid end, and fluid end to power end.

All bearings are sealed in individual pressure gun lubricated housings. Eccentrics, charn, crossheads and pins are lubricated from the power end reservoir through normal movement of parts.

**Failing** lubricator type packing glands provide positive lubrication to piston rods. This pump is equipped with **Failing** Mudmaster® pistons, hardened liners, rods and valves.



### Specifications

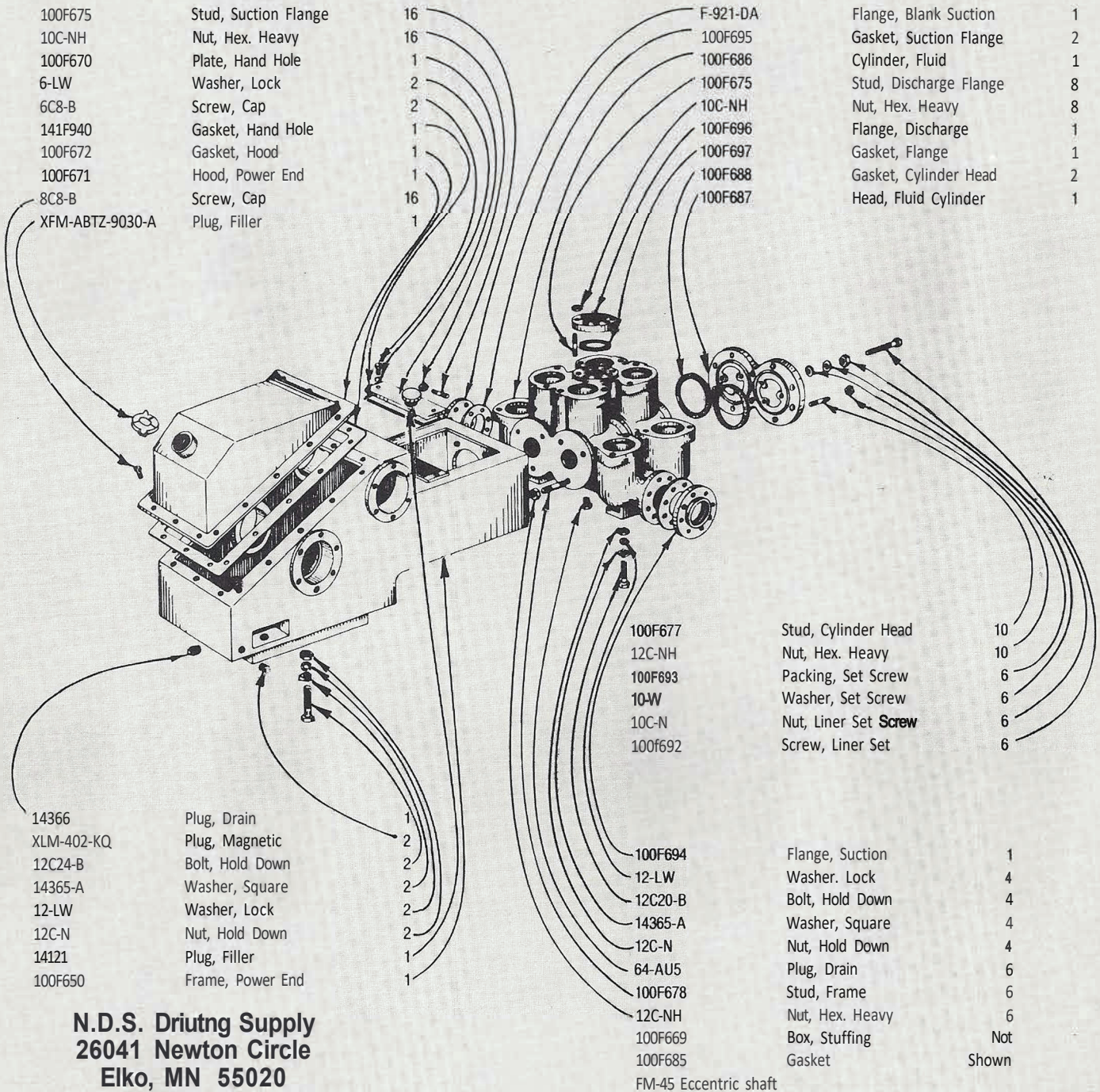
Size, Ins.		Max. Pressure (Lbs. Per Sq. In.)	Displacement		Brake H.P. at Max. Pressure	R.P.M.		Pipe Size			Approx. O.A. Dim. Ins.			
Dia. of Fluid Cylinder	Length of Stroke		Displacement U.S. Gals. per Min. (Rods Deducted)	Approx. Barrels Per Hr. (42 U.S. Gal.)		Crank-shaft	Jack-shaft	Max. Plunger Load (Lbs.)	Sue-lion	Dis-chg.	Approx. Wt. of Pump (Lbs.)	Height	Width of Mud End	Length
<b>Model FM-45 - 900 Pounds Working Pressure - 1800 Pounds Test Pressure</b>														
5		310	104-208	149-297	23-46									
4½		385	84-168	120-240	23-46									
4	6¼	492	66-132	94-188	23-46	50 -100	236-473	6320	4	2	2630	26-9/16	32¼	80-13/16
3½		646	50-100	71-143	23-46									
3		895	36-72	52-103	22.5-45									



# Slush Pump Parts

## MODEL FM-45 PARTS DRAWINGS

### Frame



**N.D.S. Driutng Supply**  
**26041 Newton Circle**  
**Elko, MN 55020**  
**Phone # 800-637-1940**  
**Fax # 952-461-3403**



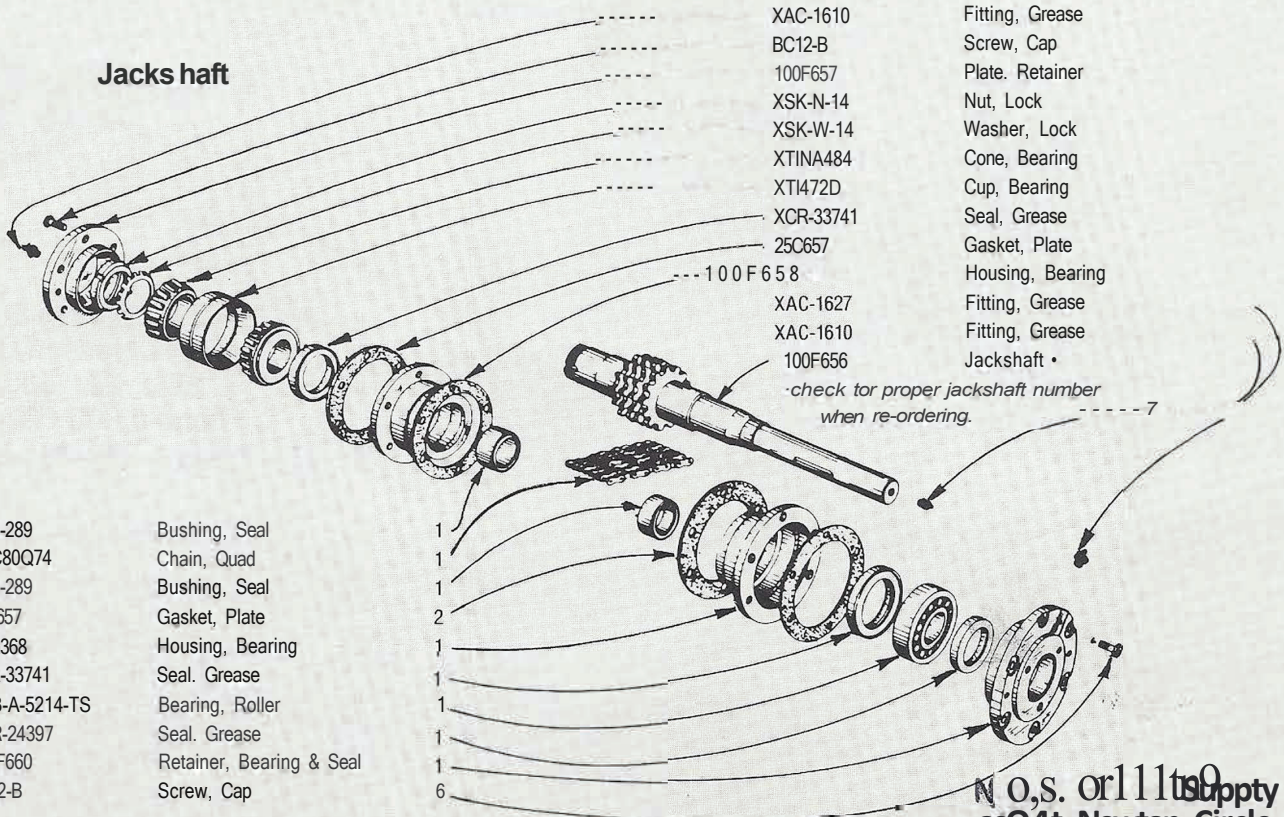




# Slush Pump Parts

## MODEL FM-45 PARTS DRAWINGS

### Jacks haft



FXG-289	Bushing, Seal
XOC80Q74	Chain, Quad
FXG-289	Bushing, Seal
25C657	Gasket, Plate
FXG368	Housing, Bearing
XCR-33741	Seal, Grease
XHB-A-5214-TS	Bearing, Roller
XCR-24397	Seal, Grease
100F660	Retainer, Bearing & Seal
8C12-B	Screw, Cap

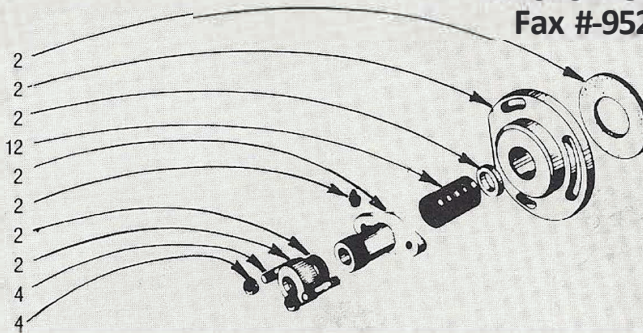
XAC-1610	Fitting, Grease
BC12-B	Screw, Cap
100F657	Plate, Retainer
XSK-N-14	Nut, Lock
XSK-W-14	Washer, Lock
XTINA484	Cone, Bearing
XTI472D	Cup, Bearing
XCR-33741	Seal, Grease
25C657	Gasket, Plate
100F658	Housing, Bearing
XAC-1627	Fitting, Grease
XAC-1610	Fitting, Grease
100F656	Jackshaft

*-check for proper jackshaft number when re-ordering.*

### Stuffing Box

#### Piston Rod Stuffing Box

100F685	Gasket
100F669	Box, Stuffing
FG-317	Ring, Junk
XG0-60-A-222	Ring, Packing
FG-21-A	Gland, Packing
XAC-1610	Fitting, Grease
XG0-60-A-222	Ring, Packing
870-F	Nut, Gland
100F676	Stud
10C-NH	Nut, Stud



#### Oil Stop Head

8C-N	Nut	4
100F674	Stud	4
100F667	Gland, Head	2
XGD-60-A-222	Packing	4
AG-318	Washer	2
8C-N	Nut	4
100F674	Stud	4
100F668	Head, Oil Stop	2
100F668	Gasket	2

No. s. or 1111 Supply  
 at Newton Circle  
 Elko, MN 55020  
 Phone # 800-537-1940  
 Fax # 952-461-3403





# GEORGE E. FAILING CO.

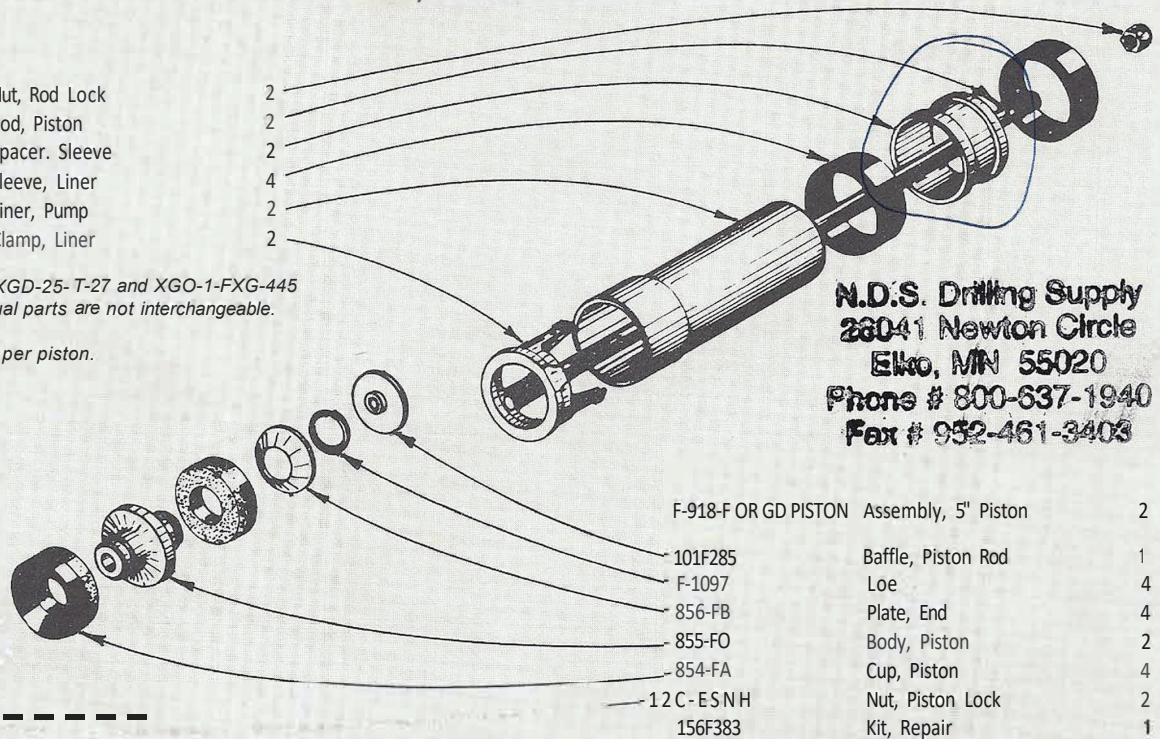
## MODEL FM-45 PARTS DRAWINGS

### Liner, Piston & Rod

- 16C-NH Nut, Rod Lock
- 21-FXG-183 Rod, Piston
- 1827A Spacer, Sleeve
- D1826 Sleeve, Liner
- D-1825 Liner, Pump
- 100F691 Clamp, Liner

*\*Interchangeable width XGD-25-T-27 and XGO-1-FXG-445 as an assembly. Individual parts are not interchangeable.*

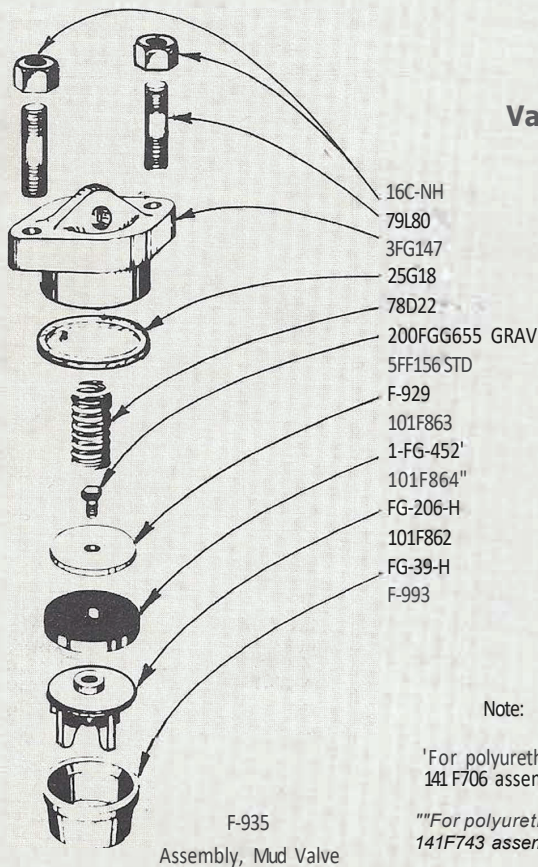
*Note: One kit required per piston.*



**N.D.S. Drilling Supply**  
 28041 Newton Circle  
 Elkton, MN 55020  
 Phone # 800-637-1940  
 Fax # 952-461-3408

- F-918-F OR GD PISTON Assembly, 5" Piston 2
- 101F285 Baffle, Piston Rod 1
- F-1097 Loe 4
- 856-FB Plate, End 4
- 855-FO Body, Piston 2
- 854-FA Cup, Piston 4
- 12 C - ESNH Nut, Piston Lock 2
- 156F383 Kit, Repair 1

### Valve Assemblies



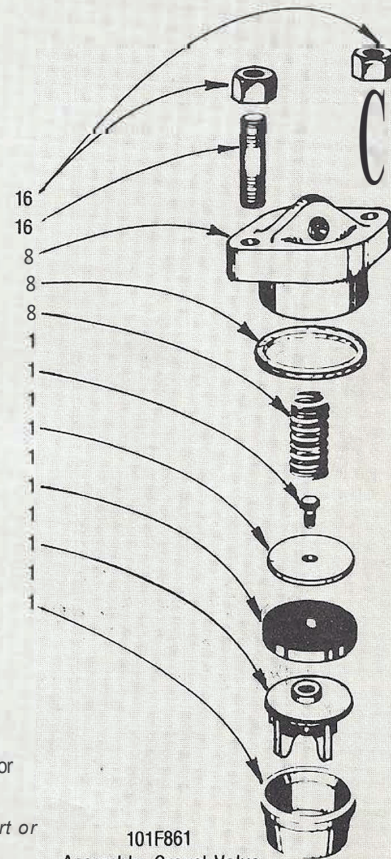
F-935  
 Assembly, Mud Valve

- 16C-NH Nut, Stud
- 79L80 Stud, Cover
- 3FG147 Plate, Cover
- 25G18 Gasket
- 78D22 Spring, Valve
- 200FGG655 GRAV Bolt
- 5FF156STD Bolt
- F-929 Washer, Valve
- 101F863 Washer, Valve
- 1-FG-452' Insert, Valve
- 101F864" Insert, Valve
- FG-206-H Valve
- 101F862 Valve
- FG-39-H Seat, Valve
- F-993 Seat, Valve

Note: 8 Valves Req'd. Per Pump.

*'For polyurethane inserts, order 140F838 insert or 141 F706 assembly.*

*""For polyurethane inserts, order 140F839 insert or 141F743 assembly.*



101F861  
 Assembly, Gravel Valve