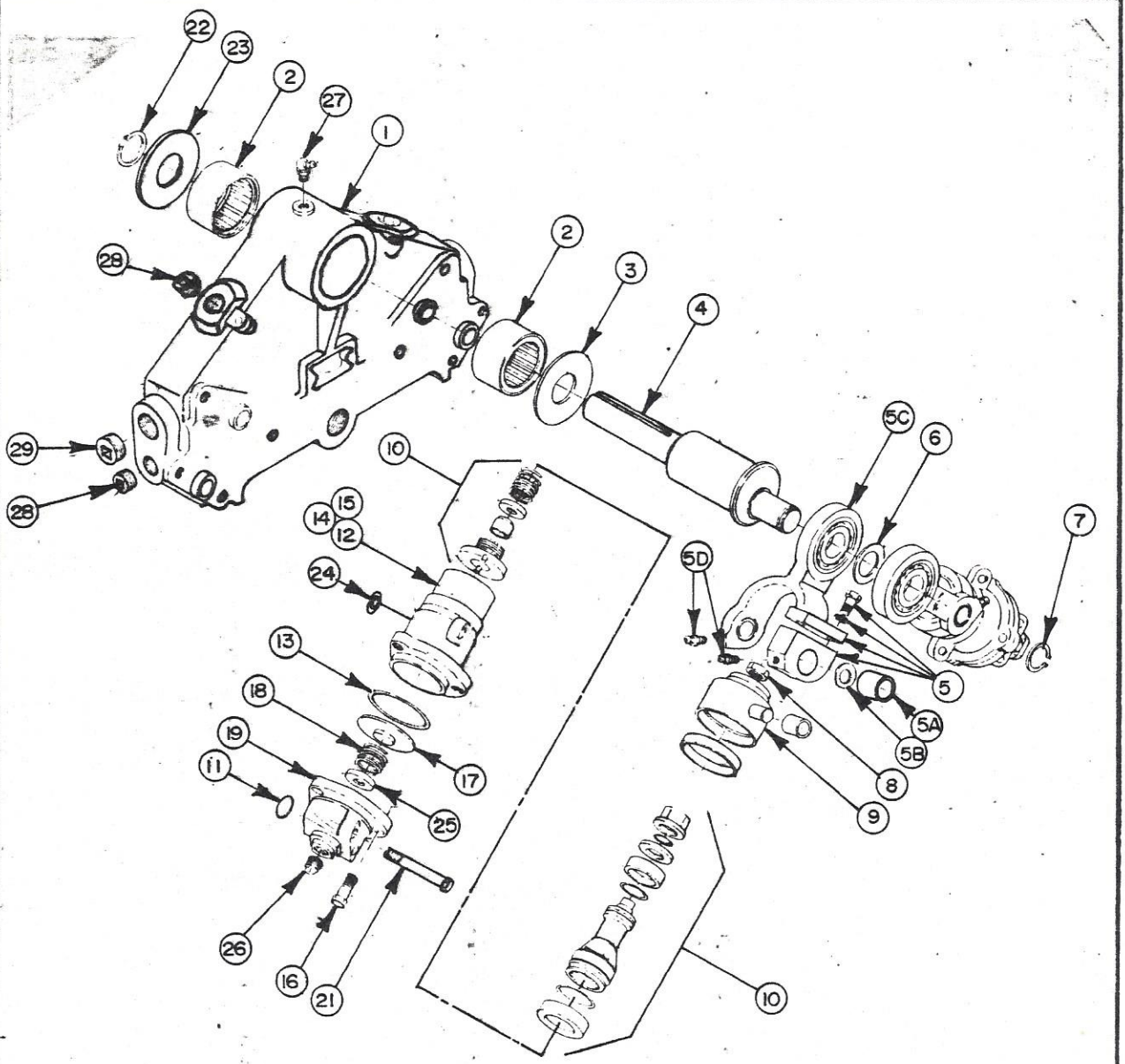


IMPORTANT: ALWAYS GIVE OUR SHOP NUMBER OF YOUR DRILL WHEN ORDERING REPAIR PARTS.



FOR PARTS LIST, SEE PB-CF-15-532-1
FOR PLUNGER ASS'Y, SEE PB-CF-15-532-2
FOR RELIEF VALVE, SEE PB-CF-15-532-3

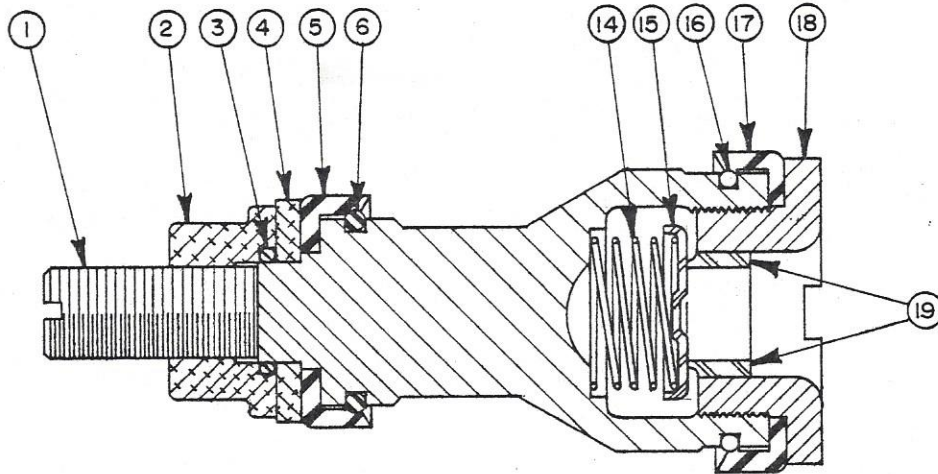
PB-CF-15-532

WATER INJECTION PUMP ASS'Y.

KW 604I

IMPORTANT: ALWAYS GIVE OUR SHOP NUMBER OF YOUR DRILL WHEN ORDERING REPAIR PARTS.

KW 6041



- ① X2MY-18241-B.....STEM, PLUNGER.....
- ② X2MY-15424-A.....NUT, FOLLOWER.....
- ③ X2MY-5876-A-68....."O"-RING.....
- ④ X2MY-5030-A-110.....WASHER.....
- ⑤ X2MY-6737-A-21.....CUP, UPPER PLUNGER.....
- ⑥ X2MY-5876-A-13....."O"-RING.....
- ⑭ X2MY-11432-A.....SPRING, PLUNGER VALVE.....
- ⑮ X2MY-17714-A-1.....VALVE, PLUNGER.....
- ⑯ X2MY-5876-A-29....."O"-RING.....
- ⑰ X2MY-6737-A-20.....CUP, LOWER PLUNGER.....
- ⑱ X2MY-15426-A-1.....FOLLOWER.....
- ⑲ X2MY-M2168-A-2.....SEAT, FOLLOWER.....

PB-CF-15-532-2

PLUNGER ASSEMBLY

ASSEMBLY NO. X2MY-15422-B-2

KW 6041

IMPORTANT: ALWAYS GIVE OUR SHOP NUMBER OF YOUR DRILL WHEN ORDERING REPAIR PARTS.

- ① X2MY-15411-D CHAMBER, AIR 1
- ①A X2MY-10789-A-34 PIN, ROLL * 2
- ② X2MY-15514-A-1 BEARING, AIR CHAMBER 2
- ②A X2MY-21310-A SPACER * 1
- ③ X2MY-5030-A-111 WASHER, THRUST 1
- ④ X2MY-17504-B SHAFT, PULLEY DRIVE 1
- ⑤ X2MY-15417-B-3 ASSY., LINK & BRG. 2
- ⑤A X2MY-15418-A-1 BEARING, LINK 4
- ⑤B X2MY-15412-A-2 SEAL, LINK GREASE 4
- ⑤C X2MY-5775-A-15 BEARING, SHAFT 2
- ⑤D X2MY-13047-A FITTING, GREASE 4
- ⑥ X2MY-5030-A-73 WASHER 1
- ⑦ X2MY-10848-A-3 RING, RETAINER 1
- ⑧ X2MY-19109-A-48 NUT, HEX. 2
- ⑨ X2MY-15420-B-1 CROSSHEAD (W/BEARING) 2
- ⑩ ASSY., PLUNGER SEE PB-CF-15-532-2
- ⑪ X2MY-5876-A-53 "O"-RING 2
- ⑫ X2MY-15427-C-1 BODY, CYLINDER 2
- ⑬ X2MY-5876-A-52 "O"-RING 2
- ⑭ X2MY-15427-C-2A LINERS, UPPER CYL. 2
- ⑮ X2MY-15427-C-3A LINERS, LOWER CYL. 2
- ⑯ X2MY-19103-A-1 SCREW, CAP 6
- ⑰ X2MY-15429-A RETAINER, SUCTION VALVE 2
- ⑱ X2MY-11432-A SPRING, SUCTION VALVE 2
- ⑲ X2MY-15428-B-1 CAP, LOWER 2
- ⑳ X2MY-M-2168-A-2 SEAT, LOWER CAP * 2
- ㉑ X2MY-19103-A-21 SCREW, CAP 8
- ㉒ X2MY-10848-A-8 RING, RETAINER 1
- ㉓ X2MY-5030-A-87 WASHER 1
- ㉔ X2MY-5876-A-68 "O"-RING 2
- ㉕ X2MY-17714-A-1 VALVE, SUCTION 2
- ㉖ X2MY-5022-A-20 PLUG, PIPE 2
- ㉗ X2MY-5725-A FITTING, GREASE 1
- ㉘ X2MY-5022-A-15 PLUG, PIPE 4
- ㉙ X2MY-5022-A-19 PLUG, PIPE 1
- ㉚ X2MY-11509-C-4A BASE, PUMP * 1

* PARTS NOT SHOWN

PB-CF-15-532-1

WATER INJECTION PUMP PARTS LIST

ASSEMBLY NO. X2MY-A08-4