



## FXD (FY-FXD) Two-Piece Fluid End DUPLEX POWER PUMP

### SPECIFICATIONS:

#### Maximum BHP

Mud Service: 85 (63 kw)

Ind'l. Service: 111 (83 kw)

#### Maximum Jackshaft RPM

Mud Service: 390

Ind'l. Service: 510

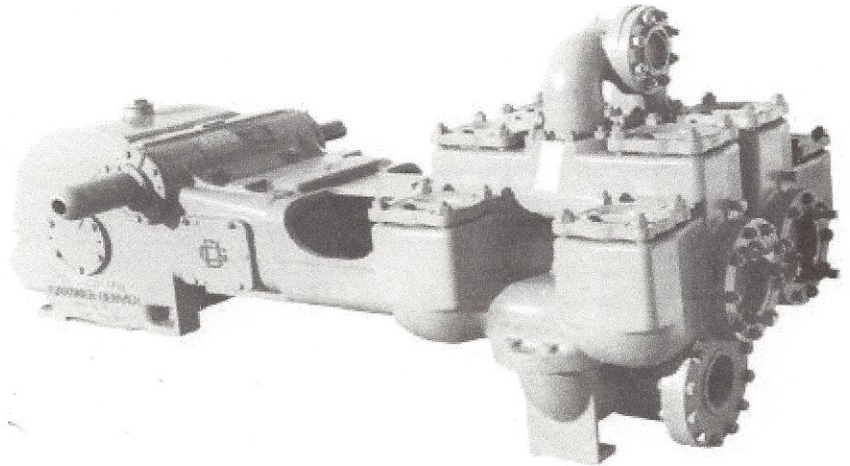
#### No. of Pistons: 2

Stroke Length: 10 in. (254 mm)

Piston Rod Load: 11270 lbs. (5,112 kg)

Oil Capacity: 14 gal. (53 liters)

Pump Weight: 7,090 lbs. (3,216 kg)



### PERFORMANCE RATINGS

#### FXD DUPLEX INDUSTRIAL PUMP for Oil Line, Mining and Industrial Service

		Normal Operation						** Maximum Recommended Operation									
Model	Stroke	Liner Size Diameter		Displacement		Max Pump RPM	Jack-shaft RPM	Input HP at Max. Speed	Displacement		Max Pump RPM	Jack-shaft RPM	Input HP at Max. Speed	*** Maximum Working Pressure		Maximum Piston Load	
		in.	mm	gpm	lpm				gpm	lpm				psi	kg/cm <sup>2</sup>		
FXD(*)	10" (254 mm)	7 1/2	191	427	1616	57	342	74.7	637	2411	85	510	111	255	18	11270 lbs. (5,112 kg)	
		7 1/4	184	398	1506				594	2248				273	19		
		7	178	371	1404				553	2093				292	20		
		6 1/2	165	319	1207				474	1798				339	23		
		6	152	270	1022				403	1525				398	27		
		5 1/2	140	226	855				337	1276				475	33		
		5	127	185	700				276	1045							

#### FXD DUPLEX MUD PUMP for Mud, Grout and Cement Service

		Normal / Maximum Recommended Operation											
Model	Stroke	Liner Size Diameter		Displacement		Max Pump RPM	Jack-shaft RPM	Input HP at Max. Speed	*** Maximum Working Pressure		Maximum Piston Load		
		in.	mm	gpm	lpm				psi	kg/cm <sup>2</sup>			
FXD(*)	10" (254 mm)	7 1/2	191	487	1843	65	390	85	255	18	11270 lbs. (5,112 kg)		
		7 1/4	184	454	1718				273	19			
		7	178	423	1601				292	20			
		6 3/4	172	392	1484				315	22			
		6 1/2	165	364	1378				339	23			
		6	152	308	1166				298	27			
		5 1/2	140	257	973				475	33			
		5	127	211	799				574	40			

Based on 90% mechanical efficiency and 100% volumetric efficiency.

Specifications subject to change without notice.

\*\* These speeds are recommended for favorable suction conditions and consideration must be given to viscosity and character of fluids.

\*\*\* Maximum working pressure shown applies to the fluid ends. Power ends are designed for certain maximum piston rod loads, and in service the power end determines the maximum pressure on a given size piston. Tabulated maximum pressure for any given size piston for maximum piston rod load must not be exceeded even at reduced RPM.

Fluid cylinder liners and pistons are interchangeable in all sizes except for the FXF cylinders fitted with 4 1/2" parts and FXX and FXD cylinders with 5 1/2" parts.

#### Distributor Contact

**NDS Drilling Supply, Inc.**

**26041 Newton Circle**

**Elko New Market, MN 55020**

**1-800-637-1940 952-461-3400**

**Distributor Contact**  
**NDS Drilling Supply, Inc.**  
**26041 Newton Circle**  
**Elko New Market, MN 55020**  
**1-800-637-1940 952-461-3400**



**FXD (FY-FXD)**  
**DUPLEX POWER PUMP**

**STANDARD EQUIPMENT**

- Rods and pistons.
- Liners and valves.
- Double-extended jackshaft with extension for one side.
- Piston rods have Gardner Denver No. 1 or API No. 1 taper (optional).
- Wood skid.
- Non-adjustable packing standard. Kevlar or double stack packing optional.

**OPTIONAL EQUIPMENT**

- Surge chamber.
- Steel skid.
- Stainless steel valves.
- Metal packed pistons.
- Special jackshafts.
- Top motor mount.

**Suction Connection:** 10" NPT 150#  
**Discharge Connection:** 4" NPT 300#  
**Jackshaft Extension**

Diameter: 3.25"  
 Length: 12.38"  
 Keyway: 12.38" L x 3/4" W x 3/4" H

**Dimensions:** Length 115.6", Width 59.4", Height 42.5"

**Note:** All installations must contain a pressure relief valve in the discharge line near the pump to help prevent breakage.

*MODEL DESIGNATIONS	
MODEL	FY-FXD
Mud Service	FXDA
Grout & Cement Service	FXDE
Oil Service	FXDJ
General Service	FXDR
Bronze Fitted (Water Service)	FXDN
Stroke	10"
Liner Size	
Maximum	7.5"
Minimum	5"
Fluid End Type	Cast Iron Two Piece

**MATERIAL SPECIFICATIONS**

COMPONENT	GENERAL SERVICE	MUD, GROUT and CEMENT	OIL SERVICE	WATER SERVICE	POWER END:	
					COMPONENT	MATERIAL
Cylinder	Cast Iron	Cast Iron	Cast Iron	Cast Iron	Eccentric	Nodular Iron
Liners	Hardened Steel	Hardened Steel	Hardened Steel	Bronze	Connecting Rods	Nodular Iron
Suction Manifold	Cast Iron	Cast Iron	Cast Iron	Cast Iron	Crossheads	Cast Iron
Discharge Manifold	Cast Iron	Cast Iron	Cast Iron	Cast Iron	Main Bearing	Tapered Roller
Packing	Braided Polymer	Molded Convex	Braided Polymer	Braided Polymer	Connecting Rod Bearing	Bronze
Piston	Iron with Pacing Rings	Steel Body with Nitrile Rubber	Iron with Pacing Rings	Bronze with Pacing Rings	Crosshead Pin Bearing	Bronze
Piston Rod	Hardened Steel	Hardened Steel	Hardened Steel	Bronze		
Stuffing Box	Cast Iron	Cast Iron	Cast Iron	Cast Iron		
Valve	Steel Center Guided	Steel Wing Guided	Steel Center Guided	Bronze Wing Guided		
Valve Seats	Steel	Steel	Steel	Bronze		

\*Materials listed are furnished as standard equipment. Alternate materials available upon request.



For additional information contact your local representative or  
 Gardner Denver Compressor and Pump Division,  
 1800 Gardner Expressway, Quincy, Illinois 62301  
 Customer Service Department  
 Telephone: (800) 682-9868 FAX: (217) 224-7814  
 Sales and Service in all major cities.