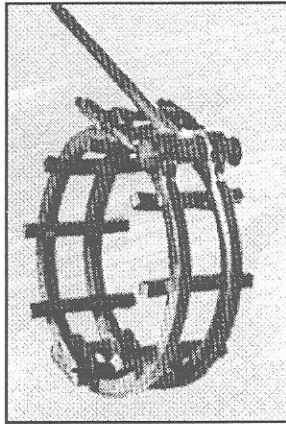


General Pipeline Alignment Clamps

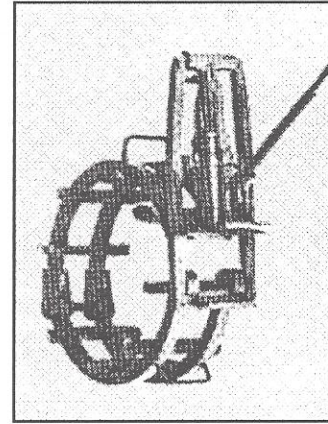
**GENERAL
STANDARD**



**FLAT
CROSS
BARS**



HAND LEVER
Simple, quick,
easy to use!
Tightens with
hand lever!
Standard in
the industry
for over 50
years.

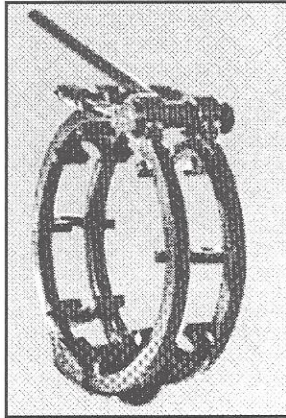


HYDRAULIC
Easy to use.
Pulls down
tight with a
hydraulic jack.

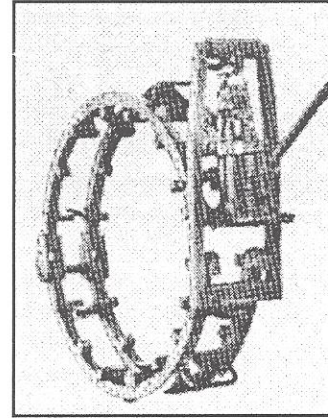
**GENERAL
NO TACK**



**ARCHED
CROSS
BARS**



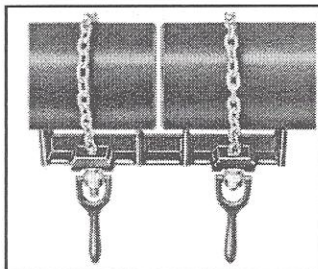
HAND LEVER
Arched cross
bar permits
full circle
welding
without
moving the
clamp.
Tightens with
hand lever.



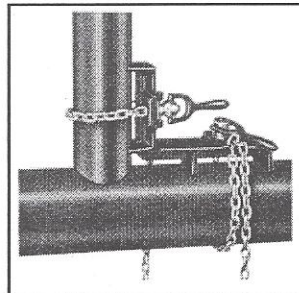
HYDRAULIC
Pulls down
tight with a
hydraulic jack.
Arched cross
bar permits full
circle welding
without moving
the clamp.

RIDGID Pipe Welding Vises & Alignment Clamps

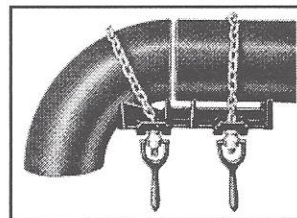
RIDGID



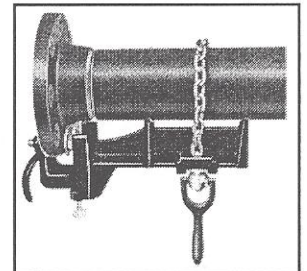
Straight Pipe Welding Vise



Angle Pipe Welding Vise



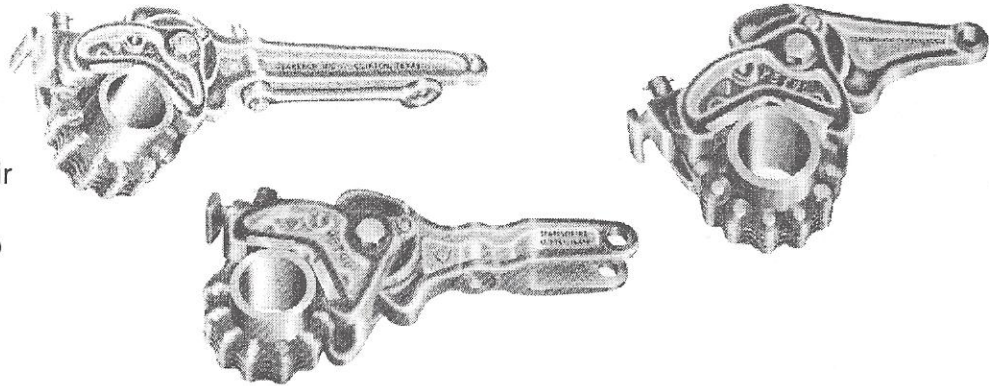
Elbow Pipe Welding Vise



Flange Pipe Welding Vise

PETOL DRILL PIPE TONGS

PETOL DRILL PIPE TONGS are designed for making up and breaking out drill pipe, casing and pneumatic drills on light rigs. These tongs are furnished as original equipment by rig manufacturers because of their ease in handling, quick application, and ability to withstand rugged use.



CATALOG NO.	O.D.*	HANDLE LENGTH**	WEIGHT***	WORKING LOAD****
DA2344-L21	2-3/8" - 4-3/4"	21"	31 lbs.	14,000 ft.-lbs.
DA2344-C12	2-3/8" - 4-3/4"	12"	27 lbs.	14,000 ft.-lbs.
DA4174-L08	3-1/4" - 8-1/4"	8"	40 lbs.	18,000 ft.-lbs.
DA4174-L21	3-1/4" - 8-1/4"	21"	48 lbs.	15,000 ft.-lbs.
DA4174-C12	3-1/4" - 8-1/4"	12"	43 lbs.	18,000 ft.-lbs.
DA6184-C10	4-1/2" - 10-3/4"	10"	50 lbs.	32,000 ft.-lbs.
DA6184-L36	4-1/2" - 10-3/4"	36"	74 lbs.	25,000 ft.-lbs.

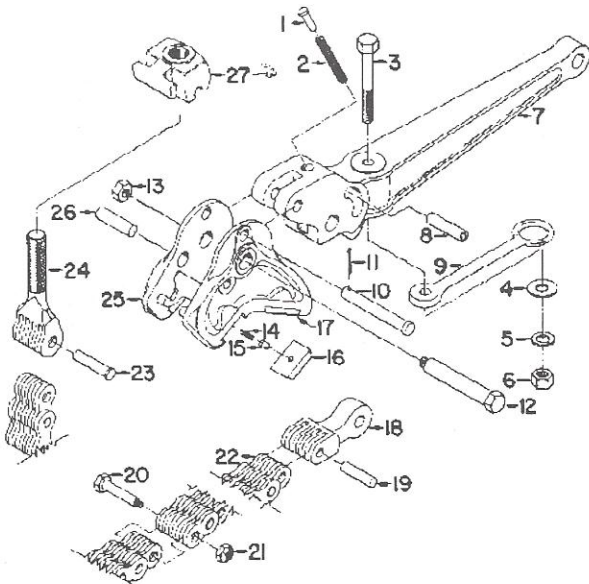
*CHAIN ASSEMBLIES MUST BE ORDERED SEPARATELY. PLEASE SPECIFY REQUIRED O.D.

**CALL FACTORY FOR TORQUE ARM LENGTHS.

***WEIGHTS DO NOT INCLUDE CHAIN.

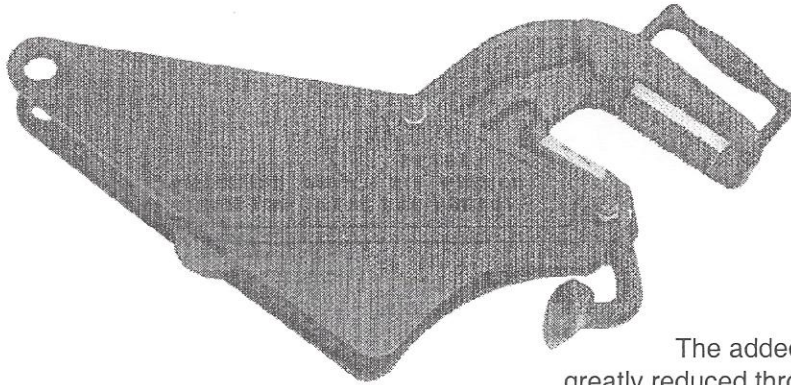
****WORKING LOAD WILL VARY WITH DIAMETER OF PIPE. CALL FACTORY FOR INFORMATION.

DO NOT EXCEED RATINGS LISTED IN TABLE. SEE SAFETY LABEL 3 ON PAGE 8 AND SAFE PRACTICES AND PROCEDURES MANUAL ON PAGES 1-7 PRIOR TO USE.



KEY NO.	ITEM DESCRIPTION	NO. REQ'D
1	Spring Guide	1
2	Spring	1
3,4,5,6	Hanger Bolt & Nut Assembly	1
7	Handle	1
8	Spring Pin Bushing	1
9	Hanger	1
10, 11	Spring Pin w/Cotter	1
12, 13	Jaw Bolt & Nut	1
14	Insert Key Spring	4
15	Insert Key	4
16	Blank Insert	2
17	Petol Insert (Diamond Point or Knurled)	2
18	Master Link	1
19	Master Link Chain Pin	1
20, 21	Splice Bolt & Nut	as req'd.
22	Special Chain Only	1
23	Chain Screw Pin	1
24	Chain Screw	1
25	Jaw	1
26	Master Link Handle Pin	1
27	Chain Screw Nut	1

PETOL RIG WRENCH



The **PETOL RIG WRENCH** provides a faster and safer method of making up or breaking out drill pipe on water well and blast hole drilling rigs.

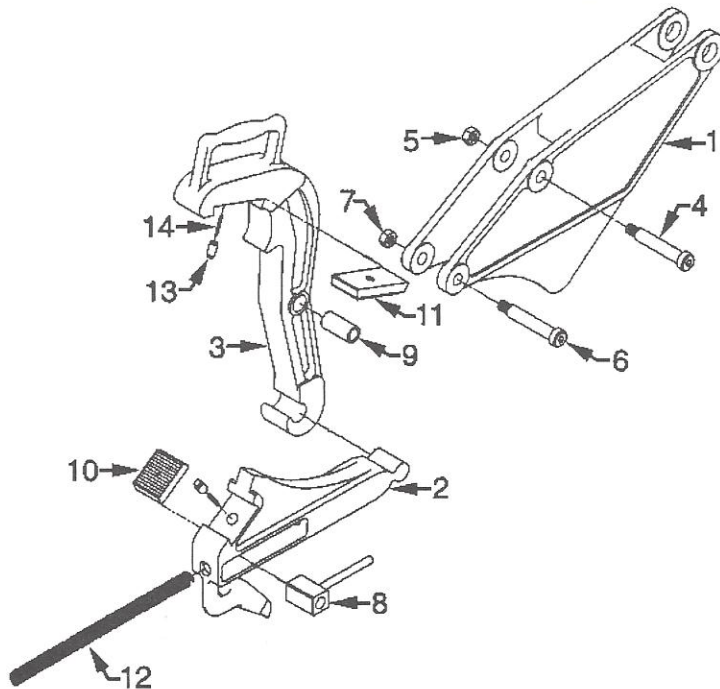
The wrench is self-adjusting and has perfect ratcheting action. Specially designed hand grips enable the operator to apply and remove the wrench with ease.

The added expense of hook jaw and insert breakage is greatly reduced through the PETOL RIG WRENCH's nonjamming feature and rugged design. Because PETOL Inserts are seated in dovetail slots, they will not shear from the wrench during use.

CATALOG NO.	O.D. CAPACITY	GRIPPING WIDTH	TORQUE ARM LENGTH	WEIGHT	WORKING LOAD
PRWA01	3-1/2" — 5"	2.25"	approx. 18"	53 lbs.	16,000 ft.-lbs.

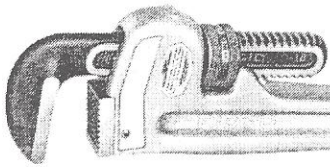
* TORQUE ARM LENGTH WILL VARY FROM 17.38" TO 19.38" DEPENDING ON PIPE O.D.

**DO NOT EXCEED PUBLISHED RATINGS.
DO NOT STRIKE TOOL IN ANY WAY.
FOLLOW OSHA, NATIONAL SAFETY COUNCIL, HAND TOOLS INSTITUTE, ETC.
STANDARDS, SAFE PRACTICES & PROCEDURES.**

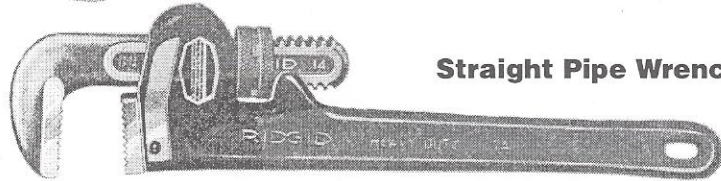


KEY NO.	ITEM DESCRIPTION	NO. REQ'D.
1	HANDLE	1
2	LOWER JAW	1
3	UPPER JAW	1
4,5	UPPER JAW BOLT & NUT	1
6,7	LOWER JAW BOLT & NUT	1
8	LOWER JAW BUSHING	1
9	UPPER JAW BUSHING	1
10	LOWER JAW INSERT	1
11	UPPER JAW INSERT	1
12	SPRING	1
13	INSERT KEY	2
14	INSERT KEY SPRING	2

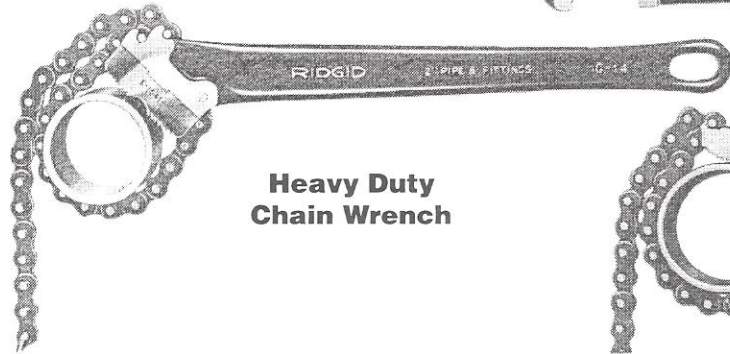
WRENCHES **SPECIAL PIPE APPLICATIONS**



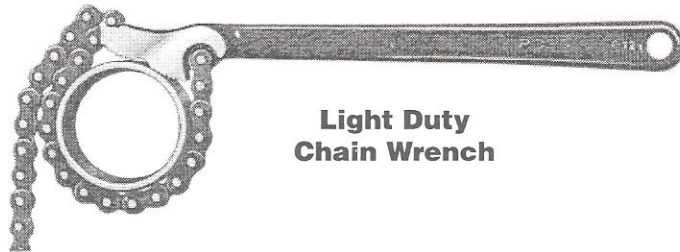
Aluminum Handle Straight Pipe Wrench



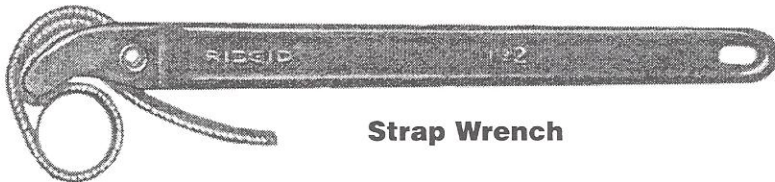
Straight Pipe Wrench



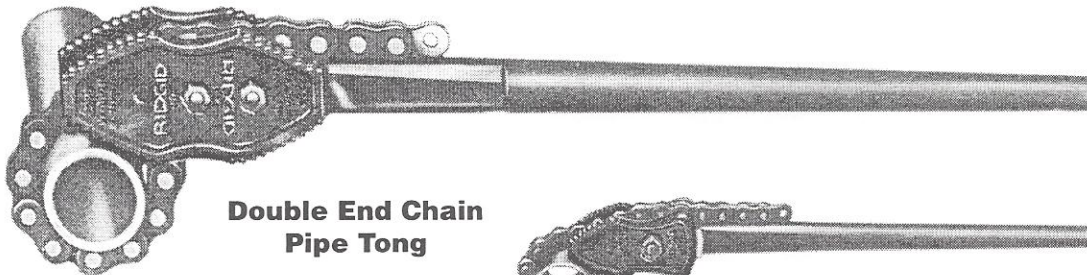
Heavy Duty Chain Wrench



Light Duty Chain Wrench



Strap Wrench



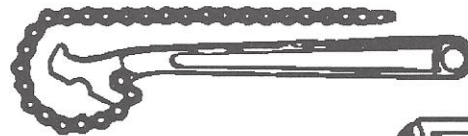
Double End Chain Pipe Tong



Single End Chain Pipe Tong

Diamond Wrenches

MODEL #	HANDLE LENGTH	CHAIN LENGTH
CW12	12"	15"
CW15	15"	19"
CW24	24"	23"



Concave Cut Teeth
for improved gripping

